



SZABO SCANDIC

Part of Europa Biosite

Produktinformation



Forschungsprodukte & Biochemikalien



Zellkultur & Verbrauchsmaterial



Diagnostik & molekulare Diagnostik



Laborgeräte & Service

Weitere Information auf den folgenden Seiten!
See the following pages for more information!



Lieferung & Zahlungsart

siehe unsere [Liefer- und Versandbedingungen](#)

Zuschläge

- Mindermengenzuschlag
- Trockeneiszuschlag
- Gefahrgutzuschlag
- Expressversand

SZABO-SCANDIC HandelsgmbH

Quellenstraße 110, A-1100 Wien

T. +43(0)1 489 3961-0

F. +43(0)1 489 3961-7

mail@szabo-scandic.com

www.szabo-scandic.com

[linkedin.com/company/szaboscandic](https://www.linkedin.com/company/szaboscandic) 

CNN1 (Human) Matched Antibody Pair

Catalog # : H00001264-AP41

規格 : [1 Set]

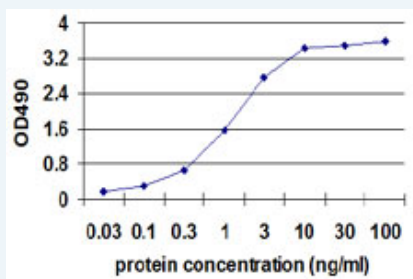
[List All](#)

Specification

Product Description: This antibody pair set comes with matched antibody pair to detect and quantify protein level of human CNN1.

Reactivity: Human

Quality Control Testing: Standard curve using recombinant protein (H00001264-P01) as an analyte.



Sandwich ELISA detection sensitivity ranging from 0.03 ng/ml to 100 ng/ml.

Supplied Product: Antibody pair set content:
 1. Capture antibody: mouse monoclonal anti-CNN1, IgG1 Kappa (100 ug)
 2. Detection antibody: biotinylated mouse monoclonal anti-CNN1, IgM Kappa (50 ug)
 *Reagents are sufficient for at least 3-5 x 96 well plates using recommended protocols.

Storage Instruction: Store reagents of the antibody pair set at -20°C or lower. Please aliquot to avoid repeated freeze thaw cycle. Reagents should be returned to -20°C storage immediately after use.

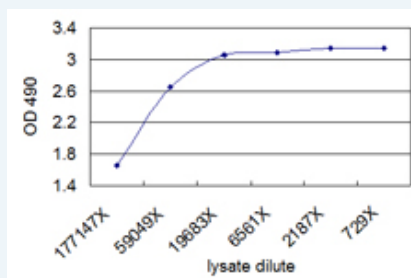
MSDS: [Download](#)

Applications

ELISA Pair (Recombinant protein)

[Protocol Download](#)

ELISA Pair (Transfected lysate)



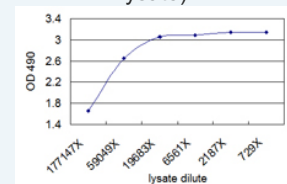
Sandwich ELISA detection sensitivity ranging from approximately 177147x to 2187x dilution of the CNN1 293T overexpression lysate (non-denatured). Standard curve using CNN1 293T overexpression lysate (non-denatured) as an analyte.

[Protocol Download](#)

Application Image

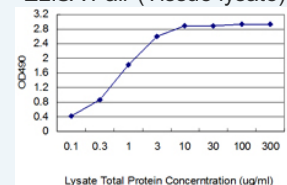
ELISA Pair (Recombinant protein)

ELISA Pair (Transfected lysate)



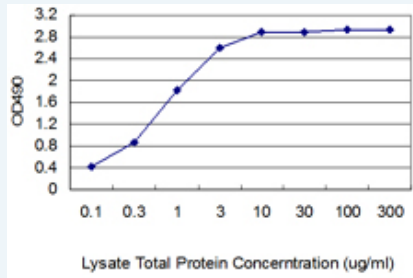
[enlarge](#)

ELISA Pair (Tissue lysate)




[enlarge](#)

ELISA Pair (Tissue lysate)



Standard curve using human uterus myoma tissue lysate as an analyte (non-denatured). Sandwich ELISA detection sensitivity ranging from 100 ng/ml to 10 ug/ml for lysate total protein.

 [Protocol Download](#)

Gene Information

Entrez GeneID: [1264](#)

Gene Name: CNN1

Gene Alias: SMCC, Sm-Calp

Gene Description: calponin 1, basic, smooth muscle

Description:

Omim ID: [600806](#)

Gene Ontology: [Hyperlink](#)

Other Designations: calponins, basic

Designations:

Related Disease

[Cardiovascular Diseases](#) [Diabetes Mellitus, Type 2](#) [Edema](#)

[服務條款](#) | [隱私權政策](#) | [著作及商標](#) | [網站地圖](#)

©2016 亞諾法生技股份有限公司 Abnova Corporation. 版權所有.