



SZABO SCANDIC

Part of Europa Biosite

Produktinformation



Forschungsprodukte & Biochemikalien



Zellkultur & Verbrauchsmaterial



Diagnostik & molekulare Diagnostik



Laborgeräte & Service

Weitere Information auf den folgenden Seiten!
See the following pages for more information!



Lieferung & Zahlungsart

siehe unsere [Liefer- und Versandbedingungen](#)

Zuschläge

- Mindermengenzuschlag
- Trockeneiszuschlag
- Gefahrgutzuschlag
- Expressversand

SZABO-SCANDIC HandelsgmbH

Quellenstraße 110, A-1100 Wien

T. +43(0)1 489 3961-0

F. +43(0)1 489 3961-7

mail@szabo-scandic.com

www.szabo-scandic.com

[linkedin.com/company/szaboscandic](https://www.linkedin.com/company/szaboscandic) 

COMT (Human) Matched Antibody Pair

Catalog # : H00001312-AP11

規格 : [1 Set]

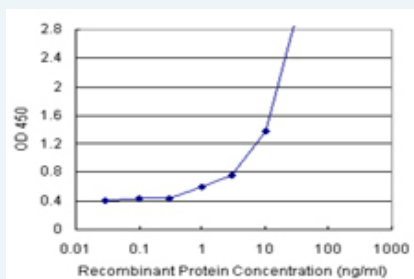
[List All](#)

Specification

Product Description: This antibody pair set comes with matched antibody pair to detect and quantify protein level of human COMT.

Reactivity: Human

Quality Control Testing: Standard curve using recombinant protein (H00001312-P01) as an analyte.



Sandwich ELISA detection sensitivity ranging from 1 ng/ml to 100 ng/ml.

Supplied Product: Antibody pair set content:
 1. Capture antibody: rabbit MaxPab® affinity purified polyclonal anti-COMT (100 ug)
 2. Detection antibody: mouse monoclonal anti-COMT, IgG2b Kappa (20 ug)
 *Reagents are sufficient for at least 1-2 x 96 well plates using recommended protocols.

Storage Instruction: Store reagents of the antibody pair set at -20°C or lower. Please aliquot to avoid repeated freeze thaw cycle. Reagents should be returned to -20°C storage immediately after use.

MSDS:  [Download](#)

Applications

ELISA Pair (Recombinant protein)

 [Protocol Download](#)

Gene Information

Entrez GeneID: [1312](#)

Gene Name: COMT

Gene Alias: -

Gene Description: catechol-O-methyltransferase

Omim ID: [116790](#), [167870](#), [181500](#)

Gene Ontology: [Hyperlink](#)

Application Image

ELISA Pair (Recombinant protein)

Gene Summary: Catechol-O-methyltransferase catalyzes the transfer of a methyl group from S-adenosylmethionine to catecholamines, including the neurotransmitters dopamine, epinephrine, and norepinephrine. This O-methylation results in one of the major degradative pathways of the catecholamine transmitters. In addition to its role in the metabolism of endogenous substances, COMT is important in the metabolism of catechol drugs used in the treatment of hypertension, asthma, and Parkinson disease. COMT is found in two forms in tissues, a soluble form (S-COMT) and a membrane-bound form (MB-COMT). The differences between S-COMT and MB-COMT reside within the N-termini. Several transcript variants are formed through the use of alternative translation initiation sites and promoters. [provided by RefSeq]

Other -
Designations:

Gene Pathway

[Betalain biosynthesis](#) [Metabolic pathways](#) [Tyrosine metabolism](#)

Related Disease

[Abnormalities Achievement](#) [Acute Disease](#) [Adenocarcinoma](#) [Adenoma, Liver Cell](#)
[Adolescent Psychology](#) [Affective Disorders, Psychotic](#) [Agoraphobia](#)
[Alcohol Withdrawal Delirium](#) [Alcoholism](#) [Alzheimer Disease](#) [Alzheimer disease](#)
[Amphetamine-Related Disorders](#) [Amyloid Neuropathies, Familial](#) [Anorexia Nervosa](#)
[Antisocial Personality Disorder](#) [Anxiety Disorders](#) [Aptitude](#) [Arousal](#)

... see more

[服務條款](#) | [隱私權政策](#) | [著作及商標](#) | [網站地圖](#)

©2016 亞諾法生技股份有限公司 Abnova Corporation. 版權所有.