



# SZABO SCANDIC

Part of Europa Biosite

## Produktinformation



Forschungsprodukte & Biochemikalien



Zellkultur & Verbrauchsmaterial



Diagnostik & molekulare Diagnostik



Laborgeräte & Service

Weitere Information auf den folgenden Seiten!  
See the following pages for more information!



### Lieferung & Zahlungsart

siehe unsere [Liefer- und Versandbedingungen](#)

### Zuschläge

- Mindermengenzuschlag
- Trockeneiszuschlag
- Gefahrgutzuschlag
- Expressversand

### SZABO-SCANDIC HandelsgmbH

Quellenstraße 110, A-1100 Wien

T. +43(0)1 489 3961-0

F. +43(0)1 489 3961-7

[mail@szabo-scandic.com](mailto:mail@szabo-scandic.com)

[www.szabo-scandic.com](http://www.szabo-scandic.com)

[linkedin.com/company/szaboscandic](https://www.linkedin.com/company/szaboscandic) 

## CPB1 (Human) Matched Antibody Pair

Catalog # : H00001360-AP11

規格 : [ 1 Set ]

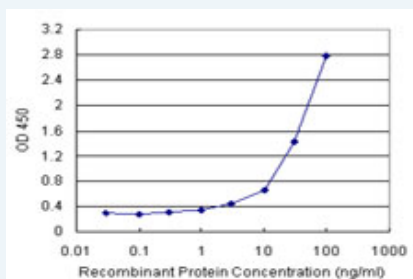
[List All](#)

### Specification

**Product Description:** This antibody pair set comes with matched antibody pair to detect and quantify protein level of human CPB1.

**Reactivity:** Human

**Quality Control Testing:** Standard curve using recombinant protein ( H00001360-P01 ) as an analyte.



Sandwich ELISA detection sensitivity ranging from 0.3 ng/ml to 100 ng/ml.

**Supplied Product:** Antibody pair set content:  
 1. Capture antibody: rabbit MaxPab® affinity purified polyclonal anti-CPB1 (100 ug)  
 2. Detection antibody: mouse monoclonal anti-CPB1, IgG2a Kappa (20 ug)  
 \*Reagents are sufficient for at least 1-2 x 96 well plates using recommended protocols.

**Storage Instruction:** Store reagents of the antibody pair set at -20°C or lower. Please aliquot to avoid repeated freeze thaw cycle. Reagents should be returned to -20°C storage immediately after use.

**MSDS:**  [Download](#)

### Applications

ELISA Pair (Recombinant protein)

 [Protocol Download](#)

### Gene Information

**Entrez GeneID:** [1360](#)

**Gene Name:** CPB1

**Gene Alias:** DKFZp779K1333,PASP,PCPB

**Gene Description:** carboxypeptidase B1 (tissue)

**Omim ID:** [114852](#)

**Gene Ontology:** [Hyperlink](#)

### Application Image

ELISA Pair (Recombinant protein)

---

**Gene Summary:** Three different procarboxypeptidases A and two different procarboxypeptidases B have been isolated. The B1 and B2 forms differ from each other mainly in isoelectric point. Carboxypeptidase B1 is a highly tissue-specific protein and is a useful serum marker for acute pancreatitis and dysfunction of pancreatic transplants. It is not elevated in pancreatic carcinoma. [provided by RefSeq]

---

**Other** pancreas-specific protein,pancreatic carboxypeptidase B1

**Designations:**

---

**Related Disease**

---

Tobacco Use Disorder

---

[服務條款](#) | [隱私權政策](#) | [著作及商標](#) | [網站地圖](#)

©2016 亞諾法生技股份有限公司 Abnova Corporation. 版權所有.