



SZABO SCANDIC

Part of Europa Biosite

Produktinformation



Forschungsprodukte & Biochemikalien



Zellkultur & Verbrauchsmaterial



Diagnostik & molekulare Diagnostik



Laborgeräte & Service

Weitere Information auf den folgenden Seiten!
See the following pages for more information!



Lieferung & Zahlungsart

siehe unsere [Liefer- und Versandbedingungen](#)

Zuschläge

- Mindermengenzuschlag
- Trockeneiszuschlag
- Gefahrgutzuschlag
- Expressversand

SZABO-SCANDIC HandelsgmbH

Quellenstraße 110, A-1100 Wien

T. +43(0)1 489 3961-0

F. +43(0)1 489 3961-7

mail@szabo-scandic.com

www.szabo-scandic.com

[linkedin.com/company/szaboscandic](https://www.linkedin.com/company/szaboscandic)

CPB2 (Human) IP-WB Antibody Pair

Catalog # : H00001361-PW2

規格 : [1 Set]

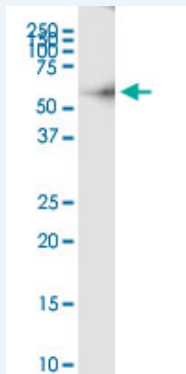
List All

Specification

Product Description: This IP-WB antibody pair set comes with one antibody for immunoprecipitation and another to detect the precipitated protein in western blot.

Reactivity: Human

Quality Control Testing: Immunoprecipitation-Western Blot (IP-WB)



Immunoprecipitation of CPB2 transfected lysate using rabbit polyclonal anti-CPB2 and Protein A Magnetic Bead ([U0007](#)), and immunoblotted with mouse purified polyclonal anti-CPB2.

Supplied Product: Antibody pair set content:
1. Antibody pair for IP: rabbit polyclonal anti-CPB2 (300 ul)
2. Antibody pair for WB: mouse purified polyclonal anti-CPB2 (50 ug)

Storage Instruction: Store reagents of the antibody pair set at -20°C or lower. Please aliquot to avoid repeated freeze thaw cycle. Reagents should be returned to -20°C storage immediately after use.

Applications

Immunoprecipitation-Western Blot

 [Protocol Download](#)

Gene Information

Entrez GeneID: [1361](#)

Gene Name: CPB2

Gene Alias: CPU,PCPB,TAFI

Gene Description: carboxypeptidase B2 (plasma)

Omim ID: [603101](#)

Gene Ontology: [Hyperlink](#)

Gene Summary: Carboxypeptidases are enzymes that hydrolyze C-terminal peptide

bonds. The carboxypeptidase family includes metallo-, serine, and cysteine carboxypeptidases. According to their substrate specificity, these enzymes are referred to as carboxypeptidase A (cleaving aliphatic residues) or carboxypeptidase B (cleaving basic amino residues). The protein encoded by this gene is activated by trypsin and acts on carboxypeptidase B substrates. After thrombin activation, the mature protein downregulates fibrinolysis. Polymorphisms have been described for this gene and its promoter region. Available sequence data analyses indicate splice variants that encode different isoforms. [provided by RefSeq]

Other Designations: OTTHUMP00000018364,OTTHUMP00000018365,bA139H14.2 (carboxypeptidase B2 (plasma)),carboxypeptidase B-like protein,carboxypeptidase B2 (plasma, carboxypeptidase U),carboxypeptidase U,plasma carboxypeptidase B2,thrombin-activable fibrinolysis inhibitor,thromb

Gene Pathway

[Complement and coagulation cascades](#)

Related Disease

[Abortion](#), [Habitual Aneurysm](#), [Ruptured Angina Pectoris](#), [Antiphospholipid Syndrome](#), [Behcet Syndrome](#), [Brain Ischemia](#), [Cadaver Carcinoma](#), [Squamous Cell Cardiovascular Diseases](#), [Cerebral Infarction](#), [Coronary Artery Disease](#), [Coronary Disease](#), [Death, Sudden, Cardiac](#), [Diabetes Mellitus](#), [Diabetes Mellitus, Type 2](#), [Edema](#), [Genetic Predisposition to Disease](#), [Hemorrhage](#), [Hemorrhagic Disorders](#)

... see more

[服務條款](#) | [隱私權政策](#) | [著作及商標](#) | [網站地圖](#)

©2016 亞諾法生技股份有限公司 Abnova Corporation. 版權所有.