



# SZABO SCANDIC

Part of Europa Biosite

## Produktinformation



Forschungsprodukte & Biochemikalien



Zellkultur & Verbrauchsmaterial



Diagnostik & molekulare Diagnostik



Laborgeräte & Service

Weitere Information auf den folgenden Seiten!  
See the following pages for more information!



### Lieferung & Zahlungsart

siehe unsere [Liefer- und Versandbedingungen](#)

### Zuschläge

- Mindermengenzuschlag
- Trockeneiszuschlag
- Gefahrgutzuschlag
- Expressversand

### SZABO-SCANDIC HandelsgmbH

Quellenstraße 110, A-1100 Wien

T. +43(0)1 489 3961-0

F. +43(0)1 489 3961-7

[mail@szabo-scandic.com](mailto:mail@szabo-scandic.com)

[www.szabo-scandic.com](http://www.szabo-scandic.com)

[linkedin.com/company/szaboscandic](https://www.linkedin.com/company/szaboscandic) 

## CREM (Human) Matched Antibody Pair

Catalog # : H00001390-AP21

規格 : [ 1 Set ]

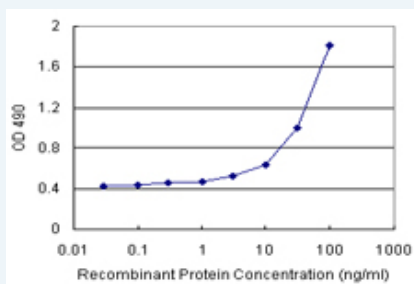
[List All](#)

### Specification

**Product Description:** This antibody pair set comes with matched antibody pair to detect and quantify protein level of human CREM.

**Reactivity:** Human

**Quality Control Testing:** Standard curve using recombinant protein ( H00001390-P01 ) as an analyte.



Sandwich ELISA detection sensitivity ranging from 3 ng/ml to 100 ng/ml.

**Supplied Product:** Antibody pair set content:  
 1. Capture antibody: rabbit MaxPab® affinity purified polyclonal anti-CREM (100 ug)  
 2. Detection antibody: mouse polyclonal anti-CREM (40 ul)  
 \*Reagents are sufficient for at least 3-5 x 96 well plates using recommended protocols.

**Storage Instruction:** Store reagents of the antibody pair set at -20°C or lower. Please aliquot to avoid repeated freeze thaw cycle. Reagents should be returned to -20°C storage immediately after use.

**MSDS:**  [Download](#)

### Applications

ELISA Pair (Recombinant protein)

 [Protocol Download](#)

### Gene Information

**Entrez GeneID:** [1390](#)

**Gene Name:** CREM

**Gene Alias:** ICER,MGC111110,MGC17881,MGC41893,hCREM-2

**Gene Description:** cAMP responsive element modulator

**Omim ID:** [123812](#)

**Gene Ontology:** [Hyperlink](#)

**Gene Summary:** This gene encodes a bZIP transcription factor that binds to the cAMP responsive element found in many viral and cellular promoters. It is an important component of cAMP-mediated signal transduction during the spermatogenic cycle, as well as other complex processes. Alternative promoter and translation initiation site usage allows this gene to exert spatial and temporal specificity to cAMP responsiveness. Multiple alternatively spliced transcript variants encoding several different isoforms have been found for this gene, with some of them functioning as activators and some as repressors of transcription. [provided by RefSeq]

**Other Designations:** OTTHUMP00000019442,OTTHUMP00000019443,OTTHUMP00000019444,OTTHUMP00000019446,OTTHUMP00000019448,cAMP response element modulator,hCREM 2alpha-b protein,hCREM 2beta-a protein,inducible cAMP early repressor ICER

#### Related Disease

[Agoraphobia](#) [Alzheimer Disease](#) [Alzheimer disease](#) [Asthma](#) [Asthma](#) [Azoospermia](#) [Cardiovascular Diseases](#) [Diabetes Complications](#) [Genetic Predisposition to Disease](#) [Metabolic Syndrome X](#) [Neoplasms](#) [Oligospermia](#) [Osteoporosis](#) [Panic Disorder](#)

[服務條款](#) | [隱私權政策](#) | [著作及商標](#) | [網站地圖](#)

©2016 亞諾法生技股份有限公司 Abnova Corporation. 版權所有.