



SZABO SCANDIC

Part of Europa Biosite

Produktinformation



Forschungsprodukte & Biochemikalien



Zellkultur & Verbrauchsmaterial



Diagnostik & molekulare Diagnostik



Laborgeräte & Service

Weitere Information auf den folgenden Seiten!
See the following pages for more information!



Lieferung & Zahlungsart

siehe unsere [Liefer- und Versandbedingungen](#)

Zuschläge

- Mindermengenzuschlag
- Trockeneiszuschlag
- Gefahrgutzuschlag
- Expressversand

SZABO-SCANDIC HandelsgmbH

Quellenstraße 110, A-1100 Wien

T. +43(0)1 489 3961-0

F. +43(0)1 489 3961-7

mail@szabo-scandic.com

www.szabo-scandic.com

[linkedin.com/company/szaboscandic](https://www.linkedin.com/company/szaboscandic) 

CRHBP (Human) IP-WB Antibody Pair

Catalog # : H00001393-PW2

規格 : [1 Set]

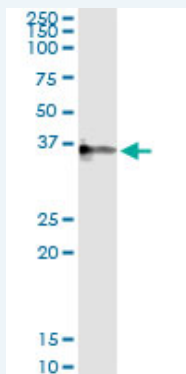
[List All](#)

Specification

Product Description: This IP-WB antibody pair set comes with one antibody for immunoprecipitation and another to detect the precipitated protein in western blot.

Reactivity: Human

Quality Control Testing: Immunoprecipitation-Western Blot (IP-WB)



Immunoprecipitation of CRHBP transfected lysate using mouse monoclonal anti-CRHBP and Protein A Magnetic Bead ([U0007](#)), and immunoblotted with rabbit polyclonal anti-CRHBP.

Supplied Product: Antibody pair set content:
1. Antibody pair for IP: mouse monoclonal anti-CRHBP (300 ug)
2. Antibody pair for WB: rabbit polyclonal anti-CRHBP (50 ul)

Storage Instruction: Store reagents of the antibody pair set at -20°C or lower. Please aliquot to avoid repeated freeze thaw cycle. Reagents should be returned to -20°C storage immediately after use.

MSDS:  [Download](#)

Applications

Immunoprecipitation-Western Blot

 [Protocol Download](#)

Gene Information

Entrez GeneID: [1393](#)

Gene Name: CRHBP

Gene Alias: CRF-BP, CRFBP

Gene Description: corticotropin releasing hormone binding protein

Omim ID: [122559](#)

Gene Ontology: [Hyperlink](#)

Application Image

Immunoprecipitation-Western Blot

Gene Summary: Corticotropin-releasing hormone is a potent stimulator of synthesis and secretion of preopiomelanocortin-derived peptides. Although CRH concentrations in the human peripheral circulation are normally low, they increase throughout pregnancy and fall rapidly after parturition. Maternal plasma CRH probably originates from the placenta. Human plasma contains a CRH-binding protein which inactivates CRH and which may prevent inappropriate pituitary-adrenal stimulation in pregnancy. [provided by RefSeq]

Other corticotropin releasing hormone-binding protein
Designations:

Related Disease

[Alcoholism](#) [Asthma](#) [Asthma](#) [Bipolar Disorder](#) [Chromosome Deletion](#) [Chronic Disease](#) [Connective Tissue Diseases](#) [Depressive Disorder, Major](#) [Disease Models, Animal](#) [Fetal Diseases](#) [Genetic Predisposition to Disease](#) [Hypertension](#) [Infection](#) [Inflammation](#) [Mental Disorders](#) [Musculoskeletal Diseases](#) [Pain](#) [Pre-Eclampsia](#) [Pregnancy Complications](#)

... see more

[服務條款](#) | [隱私權政策](#) | [著作及商標](#) | [網站地圖](#)

©2016 亞諾法生技股份有限公司 Abnova Corporation. 版權所有.