



SZABO SCANDIC

Part of Europa Biosite

Produktinformation



Forschungsprodukte & Biochemikalien



Zellkultur & Verbrauchsmaterial



Diagnostik & molekulare Diagnostik



Laborgeräte & Service

Weitere Information auf den folgenden Seiten!
See the following pages for more information!



Lieferung & Zahlungsart

siehe unsere [Liefer- und Versandbedingungen](#)

Zuschläge

- Mindermengenzuschlag
- Trockeneiszuschlag
- Gefahrgutzuschlag
- Expressversand

SZABO-SCANDIC HandelsgmbH

Quellenstraße 110, A-1100 Wien

T. +43(0)1 489 3961-0

F. +43(0)1 489 3961-7

mail@szabo-scandic.com

www.szabo-scandic.com

[linkedin.com/company/szaboscandic](https://www.linkedin.com/company/szaboscandic) 

CSE1L (Human) Matched Antibody Pair

Catalog # : H00001434-AP41

規格 : [1 Set]

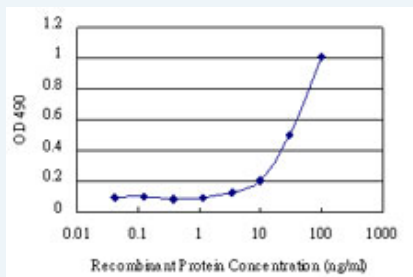
[List All](#)

Specification

Product Description: This antibody pair set comes with matched antibody pair to detect and quantify protein level of human CSE1L.

Reactivity: Human

Quality Control Testing: Standard curve using recombinant protein (H00001434-Q01) as an analyte.



Sandwich ELISA detection sensitivity ranging from 3 ng/ml to 100 ng/ml.

Supplied Product: Antibody pair set content:
 1. Capture antibody: mouse monoclonal anti-CSE1L, IgG1 Kappa (100 ug)
 2. Detection antibody: biotinylated mouse monoclonal anti-CSE1L, IgG1 Kappa (50 ug)
 *Reagents are sufficient for at least 3-5 x 96 well plates using recommended protocols.

Storage Instruction: Store reagents of the antibody pair set at -20°C or lower. Please aliquot to avoid repeated freeze thaw cycle. Reagents should be returned to -20°C storage immediately after use.

MSDS:  [Download](#)

Applications

ELISA Pair (Recombinant protein)

 [Protocol Download](#)

Spike and Recovery

ELISA spike and recovery of recombinant CSE1L protein in human plasma.

	Spike (10 ng/ml)	Spike (30 ng/ml)
Diluent control	8.85	30.33
Human plasma	7.18	29.54
Recovery	81%	97%


Application Image

ELISA Pair (Recombinant protein)

Spike and Recovery

ELISA spike and recovery of recombinant CSE1L protein in human plasma.

	Spike (10 ng/ml)	Spike (30 ng/ml)
Diluent control	8.85	30.33
Human plasma	7.18	29.54
Recovery	81%	97%

 [enlarge](#)

Gene Information

Entrez GeneID: [1434](#)

Gene Name: CSE1L

Gene Alias: CAS,CSE1,MGC117283,MGC130036,MGC130037,XPO2

Gene Description: CSE1 chromosome segregation 1-like (yeast)

Omim ID: [601342](#)

Gene Ontology: [Hyperlink](#)

Gene Summary: Proteins that carry a nuclear localization signal (NLS) are transported into the nucleus by the importin-alpha/beta heterodimer. Importin-alpha binds the NLS, while importin-beta mediates translocation through the nuclear pore complex. After translocation, RanGTP binds importin-beta and displaces importin-alpha. Importin-alpha must then be returned to the cytoplasm, leaving the NLS protein behind. The protein encoded by this gene binds strongly to NLS-free importin-alpha, and this binding is released in the cytoplasm by the combined action of RANBP1 and RANGAP1. In addition, the encoded protein may play a role both in apoptosis and in cell proliferation. [provided by RefSeq]

Other Designations: CSE1 chromosome segregation 1-like protein,OTTHUMP00000043373,cellular apoptosis susceptibility protein,chromosome segregation 1-like,importin-alpha re-exporter

[服務條款](#) | [隱私權政策](#) | [著作及商標](#) | [網站地圖](#)

©2016 亞諾法生技股份有限公司 Abnova Corporation. 版權所有.