



SZABO SCANDIC

Part of Europa Biosite

Produktinformation



Forschungsprodukte & Biochemikalien



Zellkultur & Verbrauchsmaterial



Diagnostik & molekulare Diagnostik



Laborgeräte & Service

Weitere Information auf den folgenden Seiten!
See the following pages for more information!



Lieferung & Zahlungsart

siehe unsere [Liefer- und Versandbedingungen](#)

Zuschläge

- Mindermengenzuschlag
- Trockeneiszuschlag
- Gefahrgutzuschlag
- Expressversand

SZABO-SCANDIC HandelsgmbH

Quellenstraße 110, A-1100 Wien

T. +43(0)1 489 3961-0

F. +43(0)1 489 3961-7

mail@szabo-scandic.com

www.szabo-scandic.com

[linkedin.com/company/szaboscandic](https://www.linkedin.com/company/szaboscandic) 

DCN (Human) Matched Antibody Pair

Catalog # : H00001634-AP51

規格 : [1 Set]

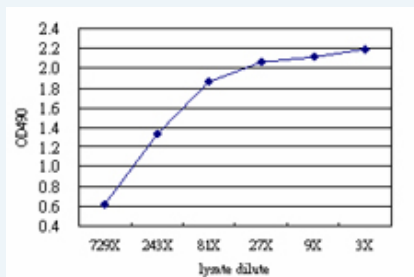
List All

Specification

Product Description: This antibody pair set comes with matched antibody pair to detect and quantify protein level of human DCN.

Reactivity: Human

Quality Control Testing: Standard curve using DCN 293T overexpression lysate (non-denatured) as an analyte.



Sandwich ELISA detection sensitivity ranging from approximately 729x to 3x dilution of the DCN 293T overexpression lysate (non-denatured).


Supplied Product: Antibody pair set content:
 1. Capture antibody: mouse monoclonal anti-DCN (100 ug)
 2. Detection antibody: rabbit purified polyclonal anti-DCN (50 ug)
 *Reagents are sufficient for at least 3-5 x 96 well plates using recommended protocols.

Storage Instruction: Store reagents of the antibody pair set at -20°C or lower. Please aliquot to avoid repeated freeze thaw cycle. Reagents should be returned to -20°C storage immediately after use.

MSDS:  [Download](#)

Applications

ELISA Pair (Transfected lysate)

 [Protocol Download](#)

Gene Information

Entrez GeneID: [1634](#)

Gene Name: DCN

Gene Alias: CSCD,DSPG2,PG40,PGII,PGS2,SLRR1B

Gene Description: decorin

Omim ID: [125255](#), [610048](#)

Gene Ontology: [Hyperlink](#)

Application Image

ELISA Pair (Transfected lysate)

Gene Summary: The protein encoded by this gene is a small cellular or pericellular matrix proteoglycan that is closely related in structure to biglycan protein. The encoded protein and biglycan are thought to be the result of a gene duplication. This protein is a component of connective tissue, binds to type I collagen fibrils, and plays a role in matrix assembly. It contains one attached glycosaminoglycan chain. This protein is capable of suppressing the growth of various tumor cell lines. There are multiple alternatively spliced transcript variants known for this gene. This gene is a candidate gene for Marfan syndrome. [provided by RefSeq]

Other bone proteoglycan II, decorin proteoglycan, dermatan sulphate
Designations: proteoglycans II, proteoglycan core protein, small leucine-rich protein 1B

Gene Pathway

[TGF-beta signaling pathway](#)

Related Disease

[Breast cancer](#) [Breast Neoplasms](#) [Cardiovascular Diseases](#) [Diabetes Mellitus, Type 1](#)
[Diabetes Mellitus, Type 2](#) [Diabetic Nephropathies](#) [Disease Progression](#) [Edema](#)
[Genetic Predisposition to Disease](#) [Myopia](#) [Myopia, Degenerative](#) [Ovarian Neoplasms](#)
[Proteinuria](#)

[服務條款](#) | [隱私權政策](#) | [著作及商標](#) | [網站地圖](#)

©2016 亞諾法生技股份有限公司 Abnova Corporation. 版權所有.