



# SZABO SCANDIC

Part of Europa Biosite

## Produktinformation



Forschungsprodukte & Biochemikalien



Zellkultur & Verbrauchsmaterial



Diagnostik & molekulare Diagnostik



Laborgeräte & Service

Weitere Information auf den folgenden Seiten!  
See the following pages for more information!



### Lieferung & Zahlungsart

siehe unsere [Liefer- und Versandbedingungen](#)

### Zuschläge

- Mindermengenzuschlag
- Trockeneiszuschlag
- Gefahrgutzuschlag
- Expressversand

### SZABO-SCANDIC HandelsgmbH

Quellenstraße 110, A-1100 Wien

T. +43(0)1 489 3961-0

F. +43(0)1 489 3961-7

[mail@szabo-scandic.com](mailto:mail@szabo-scandic.com)

[www.szabo-scandic.com](http://www.szabo-scandic.com)

[linkedin.com/company/szaboscandic](https://www.linkedin.com/company/szaboscandic) 

## AKR1C1 (Human) IP-WB Antibody Pair

Catalog # : H00001645-PW1

規格 : [ 1 Set ]

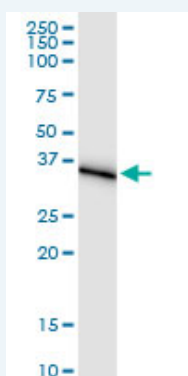
[List All](#)

### Specification

**Product Description:** This IP-WB antibody pair set comes with one antibody for immunoprecipitation and another to detect the precipitated protein in western blot.

**Reactivity:** Human

**Quality Control Testing:** Immunoprecipitation-Western Blot (IP-WB)



Immunoprecipitation of AKR1C1 transfected lysate using rabbit polyclonal anti-AKR1C1 and Protein A Magnetic Bead ([U000Z](#)), and immunoblotted with mouse purified polyclonal anti-AKR1C1.


**Supplied Product:** Antibody pair set content:  
 1. Antibody pair for IP: rabbit polyclonal anti-AKR1C1 (300 ul)  
 2. Antibody pair for WB: mouse purified polyclonal anti-AKR1C1 (50 ug)

**Storage Instruction:** Store reagents of the antibody pair set at -20°C or lower. Please aliquot to avoid repeated freeze thaw cycle. Reagents should be returned to -20°C storage immediately after use.

**MSDS:**  [Download](#)

### Applications

**Immunoprecipitation-Western Blot**

 [Protocol Download](#)

### Gene Information

**Entrez GeneID:** [1645](#)

**Gene Name:** AKR1C1

**Gene Alias:** 2-ALPHA-HSD,20-ALPHA-HSD,C9,DD1,DDH,DDH1,H-37,HAKRC,MBAB,MGC8954

**Gene Description:** aldo-keto reductase family 1, member C1 (dihydrodiol dehydrogenase 1; 20-alpha (3-alpha)-hydroxysteroid dehydrogenase)

**Omim ID:** [600449](#)

### Application Image

Immunoprecipitation-Western Blot

**Gene Ontology:** [Hyperlink](#)

---

**Gene Summary:** This gene encodes a member of the aldo/keto reductase superfamily, which consists of more than 40 known enzymes and proteins. These enzymes catalyze the conversion of aldehydes and ketones to their corresponding alcohols by utilizing NADH and/or NADPH as cofactors. The enzymes display overlapping but distinct substrate specificity. This enzyme catalyzes the reaction of progesterone to the inactive form 20-alpha-hydroxy-progesterone. This gene shares high sequence identity with three other gene members and is clustered with those three genes at chromosome 10p15-p14. [provided by RefSeq]

---

**Other Designations:** 20 alpha-hydroxysteroid dehydrogenase,OTTHUMP00000018992,aldo-keto reductase C,aldo-keto reductase family 1, member C1,chlordecone reductase homolog,dihydrodiol dehydrogenase 1,dihydrodiol dehydrogenase isoform DD1,hepatic dihydrodiol dehydrogenase,trans-

---

### **Gene Pathway**

---

[Metabolism of xenobiotics by cytochrome P450](#)

### **Related Disease**

---

[Alzheimer Disease](#) [Breast Neoplasms](#) [Genetic Predisposition to Disease](#) [Lung Neoplasms](#)  
[Lymphoma, Non-Hodgkin](#)

---

[服務條款](#) | [隱私權政策](#) | [著作及商標](#) | [網站地圖](#)

©2016 亞諾法生技股份有限公司 Abnova Corporation. 版權所有.