



SZABO SCANDIC

Part of Europa Biosite

Produktinformation



Forschungsprodukte & Biochemikalien



Zellkultur & Verbrauchsmaterial



Diagnostik & molekulare Diagnostik



Laborgeräte & Service

Weitere Information auf den folgenden Seiten!
See the following pages for more information!



Lieferung & Zahlungsart

siehe unsere [Liefer- und Versandbedingungen](#)

Zuschläge

- Mindermengenzuschlag
- Trockeneiszuschlag
- Gefahrgutzuschlag
- Expressversand

SZABO-SCANDIC HandelsgmbH

Quellenstraße 110, A-1100 Wien

T. +43(0)1 489 3961-0

F. +43(0)1 489 3961-7

mail@szabo-scandic.com

www.szabo-scandic.com

[linkedin.com/company/szaboscandic](https://www.linkedin.com/company/szaboscandic) 

ELAVL1 (Human) IP-WB Antibody Pair

Catalog # : H00001994-PW2

規格 : [1 Set]

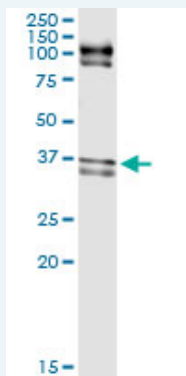
List All

Specification

Product Description: This IP-WB antibody pair set comes with one antibody for immunoprecipitation and another to detect the precipitated protein in western blot.

Reactivity: Human

Quality Control Testing: Immunoprecipitation-Western Blot (IP-WB)



Immunoprecipitation of ELAVL1 transfected lysate using rabbit polyclonal anti-ELAVL1 and Protein A Magnetic Bead (U0007), and immunoblotted with mouse purified polyclonal anti-ELAVL1.

Supplied Product: Antibody pair set content:
1. Antibody pair for IP: rabbit polyclonal anti-ELAVL1 (300 ul)
2. Antibody pair for WB: mouse purified polyclonal anti-ELAVL1 (50 ug)

Storage Instruction: Store reagents of the antibody pair set at -20°C or lower. Please aliquot to avoid repeated freeze thaw cycle. Reagents should be returned to -20°C storage immediately after use.

MSDS:  [Download](#)

Applications

Immunoprecipitation-Western Blot

 [Protocol Download](#)

Gene Information

Entrez GeneID: [1994](#)

Gene Name: ELAVL1

Gene Alias: ELAV1, HUR, Hua, MeIG

Gene Description: ELAV (embryonic lethal, abnormal vision, Drosophila)-like 1 (Hu antigen R)

Omim ID: [603466](#)

Gene Ontology: [Hyperlink](#)

Application Image

Immunoprecipitation-Western Blot

Gene Summary: The protein encoded by this gene is a member of the ELAVL protein family. This encoded protein contains 3 RNA-binding domains and binds cis-acting AU-rich elements. It destabilizes mRNAs and thereby regulates gene expression. [provided by RefSeq]

Other Designations: ELAV-like 1, Hu antigen R, embryonic lethal, abnormal vision, drosophila, homolog-like 1

Related Disease

Cardiovascular Diseases Diabetes Mellitus, Type 2 Edema

[服務條款](#) | [隱私權政策](#) | [著作及商標](#) | [網站地圖](#)

©2016 亞諾法生技股份有限公司 Abnova Corporation. 版權所有.