



SZABO SCANDIC

Part of Europa Biosite

Produktinformation



Forschungsprodukte & Biochemikalien



Zellkultur & Verbrauchsmaterial



Diagnostik & molekulare Diagnostik



Laborgeräte & Service

Weitere Information auf den folgenden Seiten!
See the following pages for more information!



Lieferung & Zahlungsart

siehe unsere [Liefer- und Versandbedingungen](#)

Zuschläge

- Mindermengenzuschlag
- Trockeneiszuschlag
- Gefahrgutzuschlag
- Expressversand

SZABO-SCANDIC HandelsgmbH

Quellenstraße 110, A-1100 Wien

T. +43(0)1 489 3961-0

F. +43(0)1 489 3961-7

mail@szabo-scandic.com

www.szabo-scandic.com

[linkedin.com/company/szaboscandic](https://www.linkedin.com/company/szaboscandic) 

MS4A2 (Human) Matched Antibody Pair

Catalog # : H00002206-AP11

規格 : [1 Set]

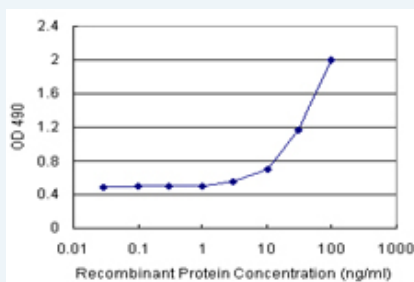
[List All](#)

Specification

Product Description: This antibody pair set comes with matched antibody pair to detect and quantify protein level of human MS4A2.

Reactivity: Human

Quality Control Testing: Standard curve using recombinant protein (H00002206-P01) as an analyte.



Sandwich ELISA detection sensitivity ranging from 3 ng/ml to 100 ng/ml.

Supplied Product: Antibody pair set content:
 1. Capture antibody: rabbit MaxPab® affinity purified polyclonal anti-MS4A2 (100 ug)
 2. Detection antibody: mouse monoclonal anti-MS4A2, IgG2a Kappa (20 ug)
 *Reagents are sufficient for at least 1-2 x 96 well plates using recommended protocols.

Storage Instruction: Store reagents of the antibody pair set at -20°C or lower. Please aliquot to avoid repeated freeze thaw cycle. Reagents should be returned to -20°C storage immediately after use.

MSDS:  [Download](#)

Applications

ELISA Pair (Recombinant protein)

 [Protocol Download](#)

Gene Information

Entrez GeneID: [2206](#)

Gene Name: MS4A2

Gene Alias: APY, ATOPY, FCER1B, FCERI, IGEL, IGER, IGER, MS4A1

Gene Description: membrane-spanning 4-domains, subfamily A, member 2 (Fc fragment of IgE, high affinity I, receptor for; beta polypeptide)

Omim ID: [147050](#), [147138](#)

Gene Ontology: [Hyperlink](#)

Application Image

ELISA Pair (Recombinant protein)

Gene Summary: The allergic response involves the binding of allergen to receptor-bound IgE followed by cell activation and the release of mediators responsible for the manifestations of allergy. The IgE-receptor, a tetramer composed of an alpha, beta, and 2 disulfide-linked gamma chains, is found on the surface of mast cells and basophils. This gene encodes the beta subunit of the high affinity IgE receptor which is a member of the membrane-spanning 4A gene family. Members of this nascent protein family are characterized by common structural features and similar intron/exon splice boundaries and display unique expression patterns among hematopoietic cells and nonlymphoid tissues. This family member is localized to 11q12, among a cluster of family members. Alternative splicing results in multiple transcript variants encoding different isoforms

Other Designations: Fc IgE receptor, beta chain, Fc epsilon receptor I beta-chain, Fc-epsilon receptor I beta-chain, High affinity immunoglobulin epsilon receptor beta-subunit (FcERI) (IgE Fc receptor, beta-subunit) (Fc epsilon receptor I beta-chain), IgE responsiveness (atopic)

Gene Pathway

[Asthma Fc epsilon RI signaling pathway](#)

Related Disease

[Angioneurotic Edema](#) [Asthma](#) [Asthma](#) [Atherosclerosis](#) [Atherosclerosis](#) [Brain Ischemia](#) [Bronchial Hyperreactivity](#) [Bronchiolitis, Viral](#) [Calcinosis](#) [Cardiovascular Diseases](#) [Cerebrovascular Disorders](#) [Chlamydia Infections](#) [Chronic Disease Constriction, Pathologic](#) [Coronary Artery Disease](#) [Coronary Disease](#) [Dermatitis, Atopic](#) [Diabetes Mellitus, Type 1](#) [Diabetes Mellitus, Type 2](#)

... see more