



SZABO SCANDIC

Part of Europa Biosite

Produktinformation



Forschungsprodukte & Biochemikalien



Zellkultur & Verbrauchsmaterial



Diagnostik & molekulare Diagnostik



Laborgeräte & Service

Weitere Information auf den folgenden Seiten!
See the following pages for more information!



Lieferung & Zahlungsart

siehe unsere [Liefer- und Versandbedingungen](#)

Zuschläge

- Mindermengenzuschlag
- Trockeneiszuschlag
- Gefahrgutzuschlag
- Expressversand

SZABO-SCANDIC HandelsgmbH

Quellenstraße 110, A-1100 Wien

T. +43(0)1 489 3961-0

F. +43(0)1 489 3961-7

mail@szabo-scandic.com

www.szabo-scandic.com

[linkedin.com/company/szaboscandic](https://www.linkedin.com/company/szaboscandic) 

GALT (Human) Matched Antibody Pair

Catalog # : H00002592-AP11

規格 : [1 Set]

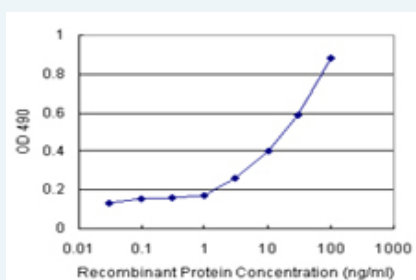
[List All](#)

Specification

Product Description: This antibody pair set comes with matched antibody pair to detect and quantify protein level of human GALT.

Reactivity: Human

Quality Control Testing: Standard curve using recombinant protein (H00002592-P01) as an analyte.



Sandwich ELISA detection sensitivity ranging from 3 ng/ml to 100 ng/ml.


Supplied Product: Antibody pair set content:
 1. Capture antibody: rabbit MaxPab® affinity purified polyclonal anti-GALT (100 ug)
 2. Detection antibody: mouse monoclonal anti-GALT, IgG2a Kappa (20 ug)
 *Reagents are sufficient for at least 1-2 x 96 well plates using recommended protocols.

Storage Instruction: Store reagents of the antibody pair set at -20°C or lower. Please aliquot to avoid repeated freeze thaw cycle. Reagents should be returned to -20°C storage immediately after use.

MSDS:  [Download](#)

Applications

ELISA Pair (Recombinant protein)

 [Protocol Download](#)

Gene Information

Entrez GeneID: [2592](#)

Gene Name: GALT

Gene Alias: -

Gene Description: galactose-1-phosphate uridylyltransferase

Omim ID: [230400](#), [606999](#)

Gene Ontology: [Hyperlink](#)

Gene Summary: Galactose-1-phosphate uridyl transferase (GALT) catalyzes the second step of the Leloir pathway of galactose metabolism, namely the conversion of UDP-glucose + galactose-1-phosphate to glucose-1-phosphate + UDP-galactose. The absence of this enzyme results in classic galactosemia in humans and can be fatal in the newborn period if lactose is not removed from the diet. The pathophysiology of galactosemia has not been clearly defined. [provided by RefSeq]

Other Designations: OTTHUMP00000021298,galactose-1-phosphate uridyl transferase

Gene Pathway

[Amino sugar and nucleotide sugar metabolism](#) [Galactose metabolism](#) [Metabolic pathways](#)

Related Disease

[Amenorrhea](#) [Cataract](#) [Diabetes Mellitus](#) [Endometriosis](#) [Galactosemias](#)
[Genetic Predisposition to Disease](#) [Infertility, Female](#) [Mental Retardation](#) [Obesity](#)
[Ovarian cancer](#) [Ovarian Failure, Premature](#) [Ovarian Neoplasms](#) [Phenylketonuria](#)
[Phenylketonurias](#) [Polycystic Ovary Syndrome](#) [Puberty, Delayed](#) [Puberty, Precocious](#)
[Syndrome](#) [Thrombophilia](#)

... see more

[服務條款](#) | [隱私權政策](#) | [著作及商標](#) | [網站地圖](#)

©2016 亞諾法生技股份有限公司 Abnova Corporation. 版權所有.