



# SZABO SCANDIC

Part of Europa Biosite

## Produktinformation



Forschungsprodukte & Biochemikalien



Zellkultur & Verbrauchsmaterial



Diagnostik & molekulare Diagnostik



Laborgeräte & Service

Weitere Information auf den folgenden Seiten!  
See the following pages for more information!



### Lieferung & Zahlungsart

siehe unsere [Liefer- und Versandbedingungen](#)

### Zuschläge

- Mindermengenzuschlag
- Trockeneiszuschlag
- Gefahrgutzuschlag
- Expressversand

### SZABO-SCANDIC HandelsgmbH

Quellenstraße 110, A-1100 Wien

T. +43(0)1 489 3961-0

F. +43(0)1 489 3961-7

[mail@szabo-scandic.com](mailto:mail@szabo-scandic.com)

[www.szabo-scandic.com](http://www.szabo-scandic.com)

[linkedin.com/company/szaboscandic](https://www.linkedin.com/company/szaboscandic) 

## GAPDH (Human) Matched Antibody Pair

Catalog # : H00002597-AP51

規格 : [ 1 Set ]

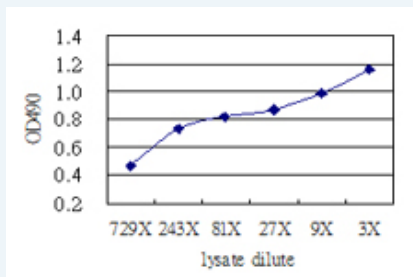
[List All](#)

### Specification

**Product Description:** This antibody pair set comes with matched antibody pair to detect and quantify protein level of human GAPDH.

**Reactivity:** Human

**Quality Control Testing:** Standard curve using GAPDH 293T overexpression lysate (non-denatured) as an analyte.



Sandwich ELISA detection sensitivity ranging from approximately 729x to 3x dilution of the GAPDH 293T overexpression lysate (non-denatured).

**Supplied Product:** Antibody pair set content:  
 1. Capture antibody: mouse monoclonal anti-GAPDH, IgG1 Kappa (100 ug)  
 2. Detection antibody: rabbit purified polyclonal anti-GAPDH (50 ug)  
 \*Reagents are sufficient for at least 3-5 x 96 well plates using recommended protocols.

**Storage Instruction:** Store reagents of the antibody pair set at -20°C or lower. Please aliquot to avoid repeated freeze thaw cycle. Reagents should be returned to -20°C storage immediately after use.

**MSDS:**  [Download](#)

### Applications

ELISA Pair (Transfected lysate)

 [Protocol Download](#)

### Gene Information

**Entrez GeneID:** [2597](#)

**Gene Name:** GAPDH

**Gene Alias:** G3PD,GAPD,MGC88685

**Gene Description:** glyceraldehyde-3-phosphate dehydrogenase

**Omim ID:** [138400](#)

**Gene Ontology:** [Hyperlink](#)

### Application Image

ELISA Pair (Transfected lysate)

**Gene Summary:** The product of this gene catalyzes an important energy-yielding step in carbohydrate metabolism, the reversible oxidative phosphorylation of glyceraldehyde-3-phosphate in the presence of inorganic phosphate and nicotinamide adenine dinucleotide (NAD). The enzyme exists as a tetramer of identical chains. Many pseudogenes similar to this locus are present in the human genome. [provided by RefSeq]

**Other Designations:** OTTHUMP00000174431,OTTHUMP00000174432,aging-associated gene 9 protein,glyceraldehyde 3-phosphate dehydrogenase

### Gene Pathway

[Alzheimer's disease](#) [Biosynthesis of alkaloids derived from histidine and purine](#)  
[Biosynthesis of alkaloids derived from ornithine, lysine and nicotinic acid](#)  
[Biosynthesis of alkaloids derived from shikimate pathway](#)  
[Biosynthesis of alkaloids derived from terpenoid and polyketide](#)  
[Biosynthesis of phenylpropanoids](#) [Biosynthesis of plant hormones](#)  
[Biosynthesis of terpenoids and steroids](#) [Glycolysis / Gluconeogenesis](#) [Metabolic pathways](#)

### Related Disease

[Alzheimer Disease](#) [Alzheimer disease](#) [Cardiovascular Diseases](#) [Diabetes Complications](#)  
[Metabolic Syndrome X](#) [Neoplasms](#) [Nerve Degeneration](#) [Osteoporosis](#)

[服務條款](#) | [隱私權政策](#) | [著作及商標](#) | [網站地圖](#)

©2016 亞諾法生技股份有限公司 Abnova Corporation. 版權所有.