



SZABO SCANDIC

Part of Europa Biosite

Produktinformation



Forschungsprodukte & Biochemikalien



Zellkultur & Verbrauchsmaterial



Diagnostik & molekulare Diagnostik



Laborgeräte & Service

Weitere Information auf den folgenden Seiten!
See the following pages for more information!



Lieferung & Zahlungsart

siehe unsere [Liefer- und Versandbedingungen](#)

Zuschläge

- Mindermengenzuschlag
- Trockeneiszuschlag
- Gefahrgutzuschlag
- Expressversand

SZABO-SCANDIC HandelsgmbH

Quellenstraße 110, A-1100 Wien

T. +43(0)1 489 3961-0

F. +43(0)1 489 3961-7

mail@szabo-scandic.com

www.szabo-scandic.com

[linkedin.com/company/szaboscandic](https://www.linkedin.com/company/szaboscandic) 

GBE1 (Human) IP-WB Antibody Pair

Catalog # : H00002632-PW1

規格 : [1 Set]

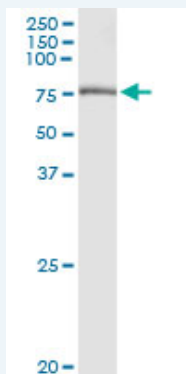
List All

Specification

Product Description: This IP-WB antibody pair set comes with one antibody for immunoprecipitation and another to detect the precipitated protein in western blot.

Reactivity: Human

Quality Control Testing: Immunoprecipitation-Western Blot (IP-WB)



Immunoprecipitation of GBE1 transfected lysate using rabbit polyclonal anti-GBE1 and Protein A Magnetic Bead (U0007), and immunoblotted with mouse purified polyclonal anti-GBE1.

Supplied Product: Antibody pair set content:
1. Antibody pair for IP: rabbit polyclonal anti-GBE1 (300 ul)
2. Antibody pair for WB: mouse purified polyclonal anti-GBE1 (50 ug)

Storage Instruction: Store reagents of the antibody pair set at -20°C or lower. Please aliquot to avoid repeated freeze thaw cycle. Reagents should be returned to -20°C storage immediately after use.

MSDS:  [Download](#)

Applications

Immunoprecipitation-Western Blot

 [Protocol Download](#)

Gene Information

Entrez GeneID: [2632](#)

Gene Name: GBE1

Gene Alias: GBE

Gene Description: glucan (1,4-alpha-), branching enzyme 1

Omim ID: [232500](#), [607839](#)

Gene Ontology: [Hyperlink](#)

Application Image

Immunoprecipitation-Western Blot

Gene Summary: The protein encoded by this gene is a glycogen branching enzyme that catalyzes the transfer of alpha-1,4-linked glucosyl units from the outer end of a glycogen chain to an alpha-1,6 position on the same or a neighboring glycogen chain. Branching of the chains is essential to increase the solubility of the glycogen molecule and, consequently, in reducing the osmotic pressure within cells. Highest level of this enzyme are found in liver and muscle. Mutations in this gene are associated with glycogen storage disease IV (also known as Andersen's disease).
[provided by RefSeq]

Other Designations: amylo-(1,4 to 1,6) transglucosidase,amylo-(1,4 to 1,6) transglycosylase,glycogen branching enzyme,glycogen storage disease type IV

Gene Pathway

[Metabolic pathways](#) [Starch and sucrose metabolism](#)

Related Disease

[Asthma](#) [Cardiovascular Diseases](#) [Coronary Disease](#) [Diabetes Mellitus, Type 2](#) [Edema](#) [Genetic Predisposition to Disease](#) [Metabolic Diseases](#) [Metabolic Syndrome X](#) [Obesity](#) [Obesity](#) [Tobacco Use Disorder](#)

[服務條款](#) | [隱私權政策](#) | [著作及商標](#) | [網站地圖](#)

©2016 亞諾法生技股份有限公司 Abnova Corporation. 版權所有.