



SZABO SCANDIC

Part of Europa Biosite

Produktinformation



Forschungsprodukte & Biochemikalien



Zellkultur & Verbrauchsmaterial



Diagnostik & molekulare Diagnostik



Laborgeräte & Service

Weitere Information auf den folgenden Seiten!
See the following pages for more information!



Lieferung & Zahlungsart

siehe unsere [Liefer- und Versandbedingungen](#)

Zuschläge

- Mindermengenzuschlag
- Trockeneiszuschlag
- Gefahrgutzuschlag
- Expressversand

SZABO-SCANDIC HandelsgmbH

Quellenstraße 110, A-1100 Wien

T. +43(0)1 489 3961-0

F. +43(0)1 489 3961-7

mail@szabo-scandic.com

www.szabo-scandic.com

[linkedin.com/company/szaboscandic](https://www.linkedin.com/company/szaboscandic) 

GCG (Human) Matched Antibody Pair

Catalog # : H00002641-AP41

規格 : [1 Set]

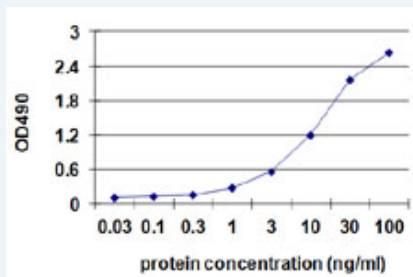
[List All](#)

Specification

Product Description: This antibody pair set comes with matched antibody pair to detect and quantify protein level of human GCG.

Reactivity: Human

Quality Control Testing: Standard curve using recombinant protein (H00002641-P01) as an analyte.



Sandwich ELISA detection sensitivity ranging from 0.1 ng/ml to 100 ng/ml.

Supplied Product: Antibody pair set content:
 1. Capture antibody: mouse monoclonal anti-GCG, IgG1 Kappa (100 ug)
 2. Detection antibody: biotinylated mouse monoclonal anti-GCG, IgG1 Kappa (50 ug)
 *Reagents are sufficient for at least 3-5 x 96 well plates using recommended protocols.

Storage Instruction: Store reagents of the antibody pair set at -20°C or lower. Please aliquot to avoid repeated freeze thaw cycle. Reagents should be returned to -20°C storage immediately after use.

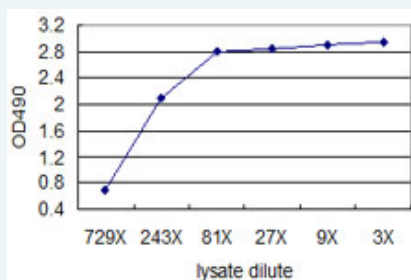
MSDS: [Download](#)

Applications

ELISA Pair (Recombinant protein)

[Protocol Download](#)

ELISA Pair (Transfected lysate)



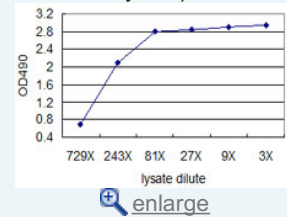
Standard curve using 293T overexpression lysate (non-denatured) as an analyte. Sandwich ELISA detection sensitivity ranging from approximately 729x to 3x dilution of the 293T overexpression lysate (non-denatured).

[Protocol Download](#)

Application Image

ELISA Pair (Recombinant protein)

ELISA Pair (Transfected lysate)



Gene Information

Entrez GeneID: [2641](#)

Gene Name: GCG

Gene Alias: GLP1, GLP2, GRPP

Gene Description: glucagon

Omim ID: [138030](#)

Gene Ontology: [Hyperlink](#)

Gene Summary: The protein encoded by this gene is actually a preproprotein that is cleaved into four distinct mature peptides. One of these, glucagon, is a pancreatic hormone that counteracts the glucose-lowering action of insulin by stimulating glycogenolysis and gluconeogenesis. Glucagon is a ligand for a specific G-protein linked receptor whose signalling pathway controls cell proliferation. Two of the other peptides are secreted from gut endocrine cells and promote nutrient absorption through distinct mechanisms. Finally, the fourth peptide is similar to glicentin, an active enteroglucagon. [provided by RefSeq]

Other Designations: glicentin-related polypeptide, glucagon-like peptide 1, glucagon-like peptide 2

Gene Pathway

[Neuroactive ligand-receptor interaction](#)

Related Disease

[Atherosclerosis](#) [Calcinosis](#) [Cardiovascular Diseases](#) [Coronary Artery Disease](#)
[Diabetes Mellitus](#) [Diabetes Mellitus, Type 2](#) [Drug Toxicity](#) [Edema](#) [Obesity](#)

[服務條款](#) | [隱私權政策](#) | [著作及商標](#) | [網站地圖](#)

©2016 亞諾法生技股份有限公司 Abnova Corporation. 版權所有.