



SZABO SCANDIC

Part of Europa Biosite

Produktinformation



Forschungsprodukte & Biochemikalien



Zellkultur & Verbrauchsmaterial



Diagnostik & molekulare Diagnostik



Laborgeräte & Service

Weitere Information auf den folgenden Seiten!
See the following pages for more information!



Lieferung & Zahlungsart

siehe unsere [Liefer- und Versandbedingungen](#)

Zuschläge

- Mindermengenzuschlag
- Trockeneiszuschlag
- Gefahrgutzuschlag
- Expressversand

SZABO-SCANDIC HandelsgmbH

Quellenstraße 110, A-1100 Wien

T. +43(0)1 489 3961-0

F. +43(0)1 489 3961-7

mail@szabo-scandic.com

www.szabo-scandic.com

[linkedin.com/company/szaboscandic](https://www.linkedin.com/company/szaboscandic) 

GGT1 (Human) Matched Antibody Pair

Catalog # : H00002678-AP51

規格 : [1 Set]

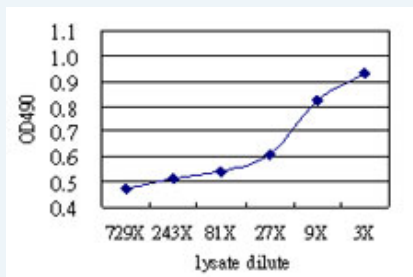
[List All](#)

Specification

Product Description: This antibody pair set comes with matched antibody pair to detect and quantify protein level of human GGT1.

Reactivity: Human

Quality Control Testing: Standard curve using GGT1 293T overexpression lysate (non-denatured) as an analyte.



Sandwich ELISA detection sensitivity ranging from approximately 27x to 3x dilution of the GGT1 293T overexpression lysate (non-denatured).

Supplied Product: Antibody pair set content:
 1. Capture antibody: mouse monoclonal anti-GGT1, IgG2a Kappa (100 ug)
 2. Detection antibody: rabbit purified polyclonal anti-GGT1 (50 ug)
 *Reagents are sufficient for at least 3-5 x 96 well plates using recommended protocols.

Storage Instruction: Store reagents of the antibody pair set at -20°C or lower. Please aliquot to avoid repeated freeze thaw cycle. Reagents should be returned to -20°C storage immediately after use.

MSDS:  [Download](#)

Applications

ELISA Pair (Transfected lysate)

 [Protocol Download](#)

Gene Information

Entrez GeneID: [2678](#)

Gene Name: GGT1

Gene Alias: CD224,D22S672,D22S732,GGT,GTG,MGC96892,MGC96904,MGC96963

Gene Description: gamma-glutamyltransferase 1

Omim ID: [231950](#)

Gene Ontology: [Hyperlink](#)

Application Image

ELISA Pair (Transfected lysate)

Gene Summary: The enzyme encoded by this gene catalyzes the transfer of the glutamyl moiety of glutathione to a variety of amino acids and dipeptide acceptors. The enzyme is composed of a heavy chain and a light chain, which are derived from a single precursor protein, and is present in tissues involved in absorption and secretion. This enzyme is a member of the gamma-glutamyltransferase protein family, of which many members have not yet been fully characterized and some of which may represent pseudogenes. This gene is classified as type I gamma-glutamyltransferase. Multiple alternatively spliced variants, encoding the same protein, have been identified. [provided by RefSeq]

Other Designations: OTTHUMP00000028921,OTTHUMP00000159078,gamma-glutamyl transpeptidase,glutamyl transpeptidase

Gene Pathway

[Arachidonic acid metabolism](#) [Cyanoamino acid metabolism](#) [Glutathione metabolism](#)
[Metabolic pathways](#) [Selenoamino acid metabolism](#) [Taurine and hypotaurine metabolism](#)

Related Disease

[Alzheimer Disease](#) [Alzheimer disease](#) [Arsenic Poisoning](#) [Cognition](#) [Disease Progression](#)
[DNA Damage](#) [Fatty Liver](#) [Genetic Predisposition to Disease](#) [Metabolic Syndrome X](#)
[Pancreatic Neoplasms](#) [Sleep Apnea, Obstructive](#)

[服務條款](#) | [隱私權政策](#) | [著作及商標](#) | [網站地圖](#)

©2016 亞諾法生技股份有限公司 Abnova Corporation. 版權所有.