



SZABO SCANDIC

Part of Europa Biosite

Produktinformation



Forschungsprodukte & Biochemikalien



Zellkultur & Verbrauchsmaterial



Diagnostik & molekulare Diagnostik



Laborgeräte & Service

Weitere Information auf den folgenden Seiten!
See the following pages for more information!



Lieferung & Zahlungsart

siehe unsere [Liefer- und Versandbedingungen](#)

Zuschläge

- Mindermengenzuschlag
- Trockeneiszuschlag
- Gefahrgutzuschlag
- Expressversand

SZABO-SCANDIC HandelsgmbH

Quellenstraße 110, A-1100 Wien

T. +43(0)1 489 3961-0

F. +43(0)1 489 3961-7

mail@szabo-scandic.com

www.szabo-scandic.com

[linkedin.com/company/szaboscandic](https://www.linkedin.com/company/szaboscandic) 

GH1 (Human) IP-WB Antibody Pair

Catalog # : H00002688-PW1

規格 : [1 Set]

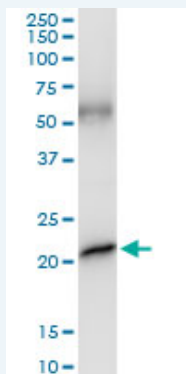
[List All](#)

Specification

Product Description: This IP-WB antibody pair set comes with one antibody for immunoprecipitation and another to detect the precipitated protein in western blot.

Reactivity: Human

Quality Control Testing: Immunoprecipitation-Western Blot (IP-WB)



Immunoprecipitation of GH1 transfected lysate using rabbit polyclonal anti-GH1 and Protein A Magnetic Bead ([U0007](#)), and immunoblotted with mouse purified polyclonal anti-GH1.

Supplied Product: Antibody pair set content:
 1. Antibody pair for IP: rabbit polyclonal anti-GH1 (300 ul)
 2. Antibody pair for WB: mouse purified polyclonal anti-GH1 (50 ug)

Storage Instruction: Store reagents of the antibody pair set at -20°C or lower. Please aliquot to avoid repeated freeze thaw cycle. Reagents should be returned to -20°C storage immediately after use.

MSDS:  [Download](#)

Applications

Immunoprecipitation-Western Blot

 [Protocol Download](#)

Gene Information

Entrez GeneID: [2688](#)

Gene Name: GH1

Gene Alias: GH, GH-N, GHN, hGH-N

Gene Description: growth hormone 1

Omim ID: [139250](#), [173100](#), [262400](#), [262650](#), [604271](#)

Gene Ontology: [Hyperlink](#)

Application Image

Immunoprecipitation-Western Blot

Gene Summary: The protein encoded by this gene is a member of the somatotropin/prolactin family of hormones which play an important role in growth control. The gene, along with four other related genes, is located at the growth hormone locus on chromosome 17 where they are interspersed in the same transcriptional orientation; an arrangement which is thought to have evolved by a series of gene duplications. The five genes share a remarkably high degree of sequence identity. Alternative splicing generates additional isoforms of each of the five growth hormones, leading to further diversity and potential for specialization. This particular family member is expressed in the pituitary but not in placental tissue as is the case for the other four genes in the growth hormone locus. Mutations in or deletions of the gene lead to growth hormone deficiency and short stature. [provided by RefSeq]

Other pituitary growth hormone

Designations:

Gene Pathway

[Cytokine-cytokine receptor interaction](#) [Jak-STAT signaling pathway](#)
[Neuroactive ligand-receptor interaction](#)

Related Disease

[Adenocarcinoma](#) [Adenoma](#) [Alzheimer Disease](#) [Alzheimer disease](#) [Birth Weight](#)
[Brain Ischemia](#) [Breast cancer](#) [Breast Neoplasms](#) [Cardiovascular Diseases](#)
[Cerebrovascular Accident](#) [Colonic Polyps](#) [Colorectal Neoplasms](#) [Diabetes Complications](#)
[Diabetes Mellitus, Type 2](#) [Dwarfism](#) [Pituitary](#) [Edema](#) [Esophageal Neoplasms](#) [Esophagitis](#)
[Genetic Predisposition to Disease](#)

... see more

[服務條款](#) | [隱私權政策](#) | [著作及商標](#) | [網站地圖](#)

©2016 亞諾法生技股份有限公司 Abnova Corporation. 版權所有.