



SZABO SCANDIC

Part of Europa Biosite

Produktinformation



Forschungsprodukte & Biochemikalien



Zellkultur & Verbrauchsmaterial



Diagnostik & molekulare Diagnostik



Laborgeräte & Service

Weitere Information auf den folgenden Seiten!
See the following pages for more information!



Lieferung & Zahlungsart

siehe unsere [Liefer- und Versandbedingungen](#)

Zuschläge

- Mindermengenzuschlag
- Trockeneiszuschlag
- Gefahrgutzuschlag
- Expressversand

SZABO-SCANDIC HandelsgmbH

Quellenstraße 110, A-1100 Wien

T. +43(0)1 489 3961-0

F. +43(0)1 489 3961-7

mail@szabo-scandic.com

www.szabo-scandic.com

[linkedin.com/company/szaboscandic](https://www.linkedin.com/company/szaboscandic) 

GLA (Human) IP-WB Antibody Pair

Catalog # : H00002717-PW2

規格 : [1 Set]

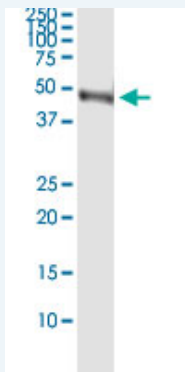
List All

Specification

Product Description: This IP-WB antibody pair set comes with one antibody for immunoprecipitation and another to detect the precipitated protein in western blot.

Reactivity: Human

Quality Control Testing: Immunoprecipitation-Western Blot (IP-WB)



Immunoprecipitation of GLA transfected lysate using rabbit polyclonal anti-GLA and Protein A Magnetic Bead (U0007), and immunoblotted with mouse purified polyclonal anti-GLA.

Supplied Product: Antibody pair set content:
1. Antibody pair for IP: rabbit polyclonal anti-GLA (300 ul)
2. Antibody pair for WB: mouse purified polyclonal anti-GLA (50 ug)

Storage Instruction: Store reagents of the antibody pair set at -20°C or lower. Please aliquot to avoid repeated freeze thaw cycle. Reagents should be returned to -20°C storage immediately after use.

Applications

Immunoprecipitation-Western Blot

 [Protocol Download](#)

Gene Information

Entrez GeneID: [2717](#)

Gene Name: GLA

Gene Alias: GALA

Gene Description: galactosidase, alpha

Omim ID: [300644](#), [301500](#)

Gene Ontology: [Hyperlink](#)

Gene Summary: This gene encodes a homodimeric glycoprotein that hydrolyses the

terminal alpha-galactosyl moieties from glycolipids and glycoproteins. This enzyme predominantly hydrolyzes ceramide trihexoside, and it can catalyze the hydrolysis of melibiose into galactose and glucose. A variety of mutations in this gene affect the synthesis, processing, and stability of this enzyme, which causes Fabry disease, a rare lysosomal storage disorder that results from a failure to catabolize alpha-D-galactosyl glycolipid moieties. [provided by RefSeq]

Other OTTHUMP00000023679, agalsidase alfa, alpha-D-galactosidase
Designations: A, alpha-D-galactoside galactohydrolase 1, alpha-gal A, alpha-galactosidase A, melibiase

Gene Pathway

[Galactose metabolism](#) [Glycerolipid metabolism](#)
[Glycosphingolipid biosynthesis - globo series](#) [Lysosome](#) [Sphingolipid metabolism](#)

Related Disease

[Cardiomyopathy](#), [Hypertrophic Cardiovascular Diseases](#) [Diabetes Mellitus, Type 2](#) [Edema](#)
[Fabry Disease](#) [Hypertrophy, Left Ventricular](#) [Lipid Metabolism](#), [Inborn Errors](#)
[Mitochondrial Myopathies](#) [Stroke](#)

[服務條款](#) | [隱私權政策](#) | [著作及商標](#) | [網站地圖](#)

©2016 亞諾法生技股份有限公司 Abnova Corporation. 版權所有.