



# SZABO SCANDIC

Part of Europa Biosite

## Produktinformation



Forschungsprodukte & Biochemikalien



Zellkultur & Verbrauchsmaterial



Diagnostik & molekulare Diagnostik



Laborgeräte & Service

Weitere Information auf den folgenden Seiten!  
See the following pages for more information!



### Lieferung & Zahlungsart

siehe unsere [Liefer- und Versandbedingungen](#)

### Zuschläge

- Mindermengenzuschlag
- Trockeneiszuschlag
- Gefahrgutzuschlag
- Expressversand

### SZABO-SCANDIC HandelsgmbH

Quellenstraße 110, A-1100 Wien

T. +43(0)1 489 3961-0

F. +43(0)1 489 3961-7

[mail@szabo-scandic.com](mailto:mail@szabo-scandic.com)

[www.szabo-scandic.com](http://www.szabo-scandic.com)

[linkedin.com/company/szaboscandic](https://www.linkedin.com/company/szaboscandic) 

## GCLM (Human) IP-WB Antibody Pair

Catalog # : H00002730-PW2

規格 : [ 1 Set ]

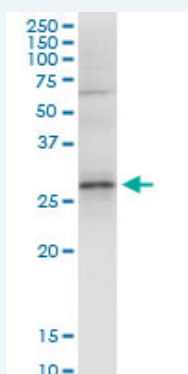
List All

### Specification

**Product Description:** This IP-WB antibody pair set comes with one antibody for immunoprecipitation and another to detect the precipitated protein in western blot.

**Reactivity:** Human

**Quality Control Testing:** Immunoprecipitation-Western Blot (IP-WB)



Immunoprecipitation of GCLM transfected lysate using rabbit polyclonal anti-GCLM and Protein A Magnetic Bead (U0007), and immunoblotted with mouse purified polyclonal anti-GCLM.

**Supplied Product:** Antibody pair set content:  
 1. Antibody pair for IP: rabbit polyclonal anti-GCLM (300 ul)  
 2. Antibody pair for WB: mouse purified polyclonal anti-GCLM (50 ug)

**Storage Instruction:** Store reagents of the antibody pair set at -20°C or lower. Please aliquot to avoid repeated freeze thaw cycle. Reagents should be returned to -20°C storage immediately after use.

**MSDS:**  [Download](#)

### Applications

Immunoprecipitation-Western Blot

 [Protocol Download](#)

### Gene Information

**Entrez GeneID:** [2730](#)

**Gene Name:** GCLM

**Gene Alias:** GLCLR

**Gene Description:** glutamate-cysteine ligase, modifier subunit

**Omim ID:** [601176](#)

**Gene Ontology:** [Hyperlink](#)

### Application Image

Immunoprecipitation-Western Blot

---

**Gene Summary:** Glutamate-cysteine ligase, also known as gamma-glutamylcysteine synthetase, is the first rate limiting enzyme of glutathione synthesis. The enzyme consists of two subunits, a heavy catalytic subunit and a light regulatory subunit. Gamma glutamylcysteine synthetase deficiency has been implicated in some forms of hemolytic anemia. [provided by RefSeq]

---

**Other Designations:** GSC light chain, OTTHUMP00000012299, gamma-glutamylcysteine synthetase, glutamate-cysteine ligase (gamma-glutamylcysteine synthetase), regulatory (30.8kD), glutamate-cysteine ligase regulatory protein

---

### Gene Pathway

---

[Glutathione metabolism](#) [Metabolic pathways](#)

### Related Disease

---

[Amphetamine-Related Disorders](#) [Arsenic Poisoning](#) [Asthma](#) [Asthma](#) [Atherosclerosis](#) [Atherosclerosis](#) [Berylliosis](#) [Bipolar Disorder](#) [Cardiovascular Diseases](#) [Carotid Artery Diseases](#) [Cerebral Infarction](#) [Chronic Disease](#) [Coronary Artery Disease](#) [Coronary Disease](#) [Dementia](#) [Vascular Diabetes Mellitus](#) [Type 2 Disease Progression](#) [DNA Damage](#) [Edema](#)

... see more

---

[服務條款](#) | [隱私權政策](#) | [著作及商標](#) | [網站地圖](#)

©2016 亞諾法生技股份有限公司 Abnova Corporation. 版權所有.