



SZABO SCANDIC

Part of Europa Biosite

Produktinformation



Forschungsprodukte & Biochemikalien



Zellkultur & Verbrauchsmaterial



Diagnostik & molekulare Diagnostik



Laborgeräte & Service

Weitere Information auf den folgenden Seiten!
See the following pages for more information!



Lieferung & Zahlungsart

siehe unsere [Liefer- und Versandbedingungen](#)

Zuschläge

- Mindermengenzuschlag
- Trockeneiszuschlag
- Gefahrgutzuschlag
- Expressversand

SZABO-SCANDIC HandelsgmbH

Quellenstraße 110, A-1100 Wien

T. +43(0)1 489 3961-0

F. +43(0)1 489 3961-7

mail@szabo-scandic.com

www.szabo-scandic.com

[linkedin.com/company/szaboscandic](https://www.linkedin.com/company/szaboscandic) 

GLUD2 (Human) IP-WB Antibody Pair

Catalog # : H00002747-PW1

規格 : [1 Set]

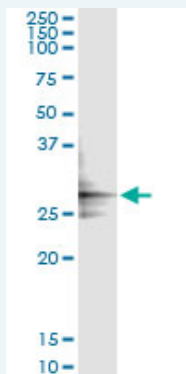
[List All](#)

Specification

Product Description: This IP-WB antibody pair set comes with one antibody for immunoprecipitation and another to detect the precipitated protein in western blot.

Reactivity: Human

Quality Control Testing: Immunoprecipitation-Western Blot (IP-WB)



Immunoprecipitation of GLUD2 transfected lysate using mouse monoclonal anti-GLUD2 and Protein A Magnetic Bead ([U0007](#)), and immunoblotted with rabbit polyclonal anti-GLUD2.

Supplied Product: Antibody pair set content:
1. Antibody pair for IP: mouse monoclonal anti-GLUD2 (300 ug)
2. Antibody pair for WB: rabbit polyclonal anti-GLUD2 (50 ul)

Storage Instruction: Store reagents of the antibody pair set at -20°C or lower. Please aliquot to avoid repeated freeze thaw cycle. Reagents should be returned to -20°C storage immediately after use.

MSDS:  [Download](#)

Applications

Immunoprecipitation-Western Blot

 [Protocol Download](#)

Gene Information

Entrez GeneID: [2747](#)

Gene Name: GLUD2

Gene Alias: GDH2, GLUDP1

Gene Description: glutamate dehydrogenase 2

Omim ID: [300144](#)

Gene Ontology: [Hyperlink](#)

Application Image

Immunoprecipitation-Western Blot

Gene Summary: Glutamate dehydrogenase (EC 1.4.1.3) catalyzes the reversible oxidative deamination of glutamate to alpha-ketoglutarate using NAD and/or NADP as cofactors. See also GLUD1 (MIM 138130).[supplied by OMIM]

Other glutamate dehydrogenase pseudogene 1
Designations:

Gene Pathway

[Alanine, aspartate and glutamate metabolism](#) [Arginine and proline metabolism](#)
[Biosynthesis of alkaloids derived from ornithine, lysine and nicotinic acid](#)
[D-Glutamine and D-glutamate metabolism](#) [Metabolic pathways](#) [Nitrogen metabolism](#)

Related Disease

[Cognition](#) [Parkinson Disease](#) [Schizophrenia](#) [Schizophrenia](#) [Schizophrenic Psychology](#)
[Weight Gain](#)

[服務條款](#) | [隱私權政策](#) | [著作及商標](#) | [網站地圖](#)

©2016 亞諾法生技股份有限公司 Abnova Corporation. 版權所有.