



# SZABO SCANDIC

Part of Europa Biosite

## Produktinformation



Forschungsprodukte & Biochemikalien



Zellkultur & Verbrauchsmaterial



Diagnostik & molekulare Diagnostik



Laborgeräte & Service

Weitere Information auf den folgenden Seiten!  
See the following pages for more information!



### Lieferung & Zahlungsart

siehe unsere [Liefer- und Versandbedingungen](#)

### Zuschläge

- Mindermengenzuschlag
- Trockeneiszuschlag
- Gefahrgutzuschlag
- Expressversand

### SZABO-SCANDIC HandelsgmbH

Quellenstraße 110, A-1100 Wien

T. +43(0)1 489 3961-0

F. +43(0)1 489 3961-7

[mail@szabo-scandic.com](mailto:mail@szabo-scandic.com)

[www.szabo-scandic.com](http://www.szabo-scandic.com)

[linkedin.com/company/szaboscandic](https://www.linkedin.com/company/szaboscandic) 

## GLUL (Human) Matched Antibody Pair

Catalog # : H00002752-AP51

規格 : [ 1 Set ]

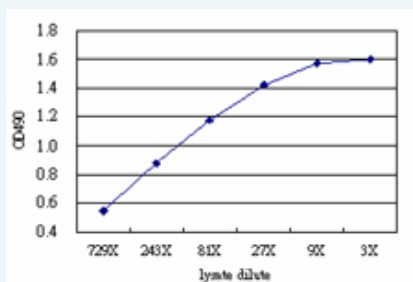
[List All](#)

### Specification

**Product Description:** This antibody pair set comes with matched antibody pair to detect and quantify protein level of human GLUL.

**Reactivity:** Human

**Quality Control Testing:** Standard curve using GLUL 293T overexpression lysate (non-denatured) as an analyte.



Sandwich ELISA detection sensitivity ranging from approximately 729x to 3x dilution of the GLUL 293T overexpression lysate (non-denatured).

**Supplied Product:** Antibody pair set content:  
 1. Capture antibody: mouse monoclonal anti-GLUL (100 ug)  
 2. Detection antibody: rabbit purified polyclonal anti-GLUL (50 ug)  
 \*Reagents are sufficient for at least 3-5 x 96 well plates using recommended protocols.

**Storage Instruction:** Store reagents of the antibody pair set at -20°C or lower. Please aliquot to avoid repeated freeze thaw cycle. Reagents should be returned to -20°C storage immediately after use.

**MSDS:**  [Download](#)

### Applications

ELISA Pair (Transfected lysate)

 [Protocol Download](#)

### Gene Information

**Entrez GeneID:** [2752](#)

**Gene Name:** GLUL

**Gene Alias:** GLNS,GS,PIG43,PIG59

**Gene Description:** glutamate-ammonia ligase (glutamine synthetase)

**Omim ID:** [138290](#), [610015](#)

**Gene Ontology:** [Hyperlink](#)

### Application Image

ELISA Pair (Transfected lysate)

**Gene Summary:** Glutamine is a main source of energy and is involved in cell proliferation, inhibition of apoptosis, and cell signaling (Haberle et al., 2005 [PubMed 16267323]). Fetal glutamine requirements are very high and depend largely on active glutamine synthesis and the release of glutamine into the fetal circulation by the placenta. Glutamine synthetase (EC 6.3.1.2), also called glutamate-ammonia ligase (GLUL), is expressed throughout the body and plays an important role in controlling body pH and in removing ammonia from the circulation. The enzyme clears L-glutamate, the major neurotransmitter in the central nervous system, from neuronal synapses (see references in Clancy et al., 1996 [PubMed 8975719]).[supplied by OMIM

**Other Designations:** OTTHUMP00000035524,OTTHUMP00000035525,cell proliferation-inducing protein 59,glutamate-ammonia ligase (glutamine synthase),glutamine synthetase,proliferation-inducing protein 43

### Gene Pathway

[Alanine, aspartate and glutamate metabolism](#) [Arginine and proline metabolism](#)  
[Metabolic pathways](#) [Nitrogen metabolism](#)

### Related Disease

[Cognition](#) [Genetic Predisposition to Disease](#) [Schizophrenia](#) [Schizophrenia](#)  
[Schizophrenia, Paranoid](#) [Schizophrenic Psychology](#) [Weight Gain](#)

[服務條款](#) | [隱私權政策](#) | [著作及商標](#) | [網站地圖](#)

©2016 亞諾法生技股份有限公司 Abnova Corporation. 版權所有.