



SZABO SCANDIC

Part of Europa Biosite

Produktinformation



Forschungsprodukte & Biochemikalien



Zellkultur & Verbrauchsmaterial



Diagnostik & molekulare Diagnostik



Laborgeräte & Service

Weitere Information auf den folgenden Seiten!
See the following pages for more information!



Lieferung & Zahlungsart

siehe unsere [Liefer- und Versandbedingungen](#)

Zuschläge

- Mindermengenzuschlag
- Trockeneiszuschlag
- Gefahrgutzuschlag
- Expressversand

SZABO-SCANDIC HandelsgmbH

Quellenstraße 110, A-1100 Wien

T. +43(0)1 489 3961-0

F. +43(0)1 489 3961-7

mail@szabo-scandic.com

www.szabo-scandic.com

[linkedin.com/company/szaboscandic](https://www.linkedin.com/company/szaboscandic) 

GOLGA2 (Human) IP-WB Antibody Pair

Catalog # : H00002801-PW2

規格 : [1 Set]

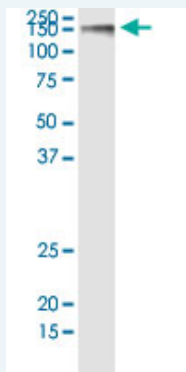
List All

Specification

Product Description: This IP-WB antibody pair set comes with one antibody for immunoprecipitation and another to detect the precipitated protein in western blot.

Reactivity: Human

Quality Control Testing: Immunoprecipitation-Western Blot (IP-WB)



Immunoprecipitation of GOLGA2 transfected lysate using rabbit polyclonal anti-GOLGA2 and Protein A Magnetic Bead (U0007), and immunoblotted with mouse purified polyclonal anti-GOLGA2.

Supplied Product: Antibody pair set content:
 1. Antibody pair for IP: rabbit polyclonal anti-GOLGA2 (300 ul)
 2. Antibody pair for WB: mouse purified polyclonal anti-GOLGA2 (50 ug)

Storage Instruction: Store reagents of the antibody pair set at -20°C or lower. Please aliquot to avoid repeated freeze thaw cycle. Reagents should be returned to -20°C storage immediately after use.

Applications

Immunoprecipitation-Western Blot

 [Protocol Download](#)

Gene Information

Entrez GeneID: [2801](#)

Gene Name: GOLGA2

Gene Alias: GM130,MGC20672

Gene Description: golgi autoantigen, golgin subfamily a, 2

Omim ID: [602580](#)

Gene Ontology: [Hyperlink](#)

Gene Summary: The Golgi apparatus, which participates in glycosylation and transport

of proteins and lipids in the secretory pathway, consists of a series of stacked cisternae (flattened membrane sacs). Interactions between the Golgi and microtubules are thought to be important for the reorganization of the Golgi after it fragments during mitosis. The golgins are a family of proteins, of which the protein encoded by this gene is a member, that are localized to the Golgi. This encoded protein has been postulated to play roles in the stacking of Golgi cisternae and in vesicular transport. Several alternatively spliced transcript variants of this gene have been described, but the full-length nature of these variants has not been determined. [provided by RefSeq

Other Golgi autoantigen, golgin subfamily a, 2, Golgi matrix protein
Designations: GM130, OTTHUMP00000022234, SY11 protein, golgin-95

[服務條款](#) | [隱私權政策](#) | [著作及商標](#) | [網站地圖](#)

©2016 亞諾法生技股份有限公司 Abnova Corporation. 版權所有.