



SZABO SCANDIC

Part of Europa Biosite

Produktinformation



Forschungsprodukte & Biochemikalien



Zellkultur & Verbrauchsmaterial



Diagnostik & molekulare Diagnostik



Laborgeräte & Service

Weitere Information auf den folgenden Seiten!
See the following pages for more information!



Lieferung & Zahlungsart

siehe unsere [Liefer- und Versandbedingungen](#)

Zuschläge

- Mindermengenzuschlag
- Trockeneiszuschlag
- Gefahrgutzuschlag
- Expressversand

SZABO-SCANDIC HandelsgmbH

Quellenstraße 110, A-1100 Wien

T. +43(0)1 489 3961-0

F. +43(0)1 489 3961-7

mail@szabo-scandic.com

www.szabo-scandic.com

[linkedin.com/company/szaboscandic](https://www.linkedin.com/company/szaboscandic) 

GOT1 (Human) IP-WB Antibody Pair

Catalog # : H00002805-PW1

規格 : [1 Set]

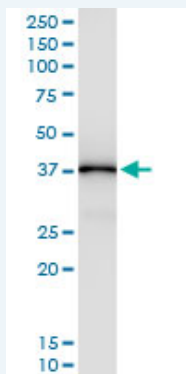
[List All](#)

Specification

Product Description: This IP-WB antibody pair set comes with one antibody for immunoprecipitation and another to detect the precipitated protein in western blot.

Reactivity: Human

Quality Control Testing: Immunoprecipitation-Western Blot (IP-WB)



Immunoprecipitation of GOT1 transfected lysate using rabbit polyclonal anti-GOT1 and Protein A Magnetic Bead (U0007), and immunoblotted with mouse purified polyclonal anti-GOT1.

Supplied Product: Antibody pair set content:
 1. Antibody pair for IP: rabbit polyclonal anti-GOT1 (300 ul)
 2. Antibody pair for WB: mouse purified polyclonal anti-GOT1 (50 ug)

Storage Instruction: Store reagents of the antibody pair set at -20°C or lower. Please aliquot to avoid repeated freeze thaw cycle. Reagents should be returned to -20°C storage immediately after use.

MSDS:  [Download](#)

Applications

Immunoprecipitation-Western Blot

 [Protocol Download](#)

Gene Information

Entrez GeneID: [2805](#)

Gene Name: GOT1

Gene Alias: GIG18

Gene Description: glutamic-oxaloacetic transaminase 1, soluble (aspartate aminotransferase 1)

Omim ID: [138180](#)

Gene Ontology: [Hyperlink](#)

Application Image

Immunoprecipitation-Western Blot

Gene Summary: Glutamic-oxaloacetic transaminase is a pyridoxal phosphate-dependent enzyme which exists in cytoplasmic and mitochondrial forms, GOT1 and GOT2, respectively. GOT plays a role in amino acid metabolism and the urea and tricarboxylic acid cycles. The two enzymes are homodimeric and show close homology. [provided by RefSeq]

Other Designations: OTTHUMP00000020254, aspartate aminotransferase 1, growth-inhibiting protein 18

Gene Pathway

[Alanine, aspartate and glutamate metabolism](#) [Arginine and proline metabolism](#)
[Biosynthesis of alkaloids derived from ornithine, lysine and nicotinic acid](#)
[Biosynthesis of phenylpropanoids](#) [Biosynthesis of plant hormones](#)
[Carbon fixation in photosynthetic organisms](#) [Cysteine and methionine metabolism](#)
[Isoquinoline alkaloid biosynthesis](#) [Metabolic pathways](#) [Novobiocin biosynthesis](#)
[Phenylalanine metabolism](#) [Phenylalanine, tyrosine and tryptophan biosynthesis](#)
[Tyrosine metabolism](#)

[服務條款](#) | [隱私權政策](#) | [著作及商標](#) | [網站地圖](#)

©2016 亞諾法生技股份有限公司 Abnova Corporation. 版權所有.