



SZABO SCANDIC

Part of Europa Biosite

Produktinformation



Forschungsprodukte & Biochemikalien



Zellkultur & Verbrauchsmaterial



Diagnostik & molekulare Diagnostik



Laborgeräte & Service

Weitere Information auf den folgenden Seiten!
See the following pages for more information!



Lieferung & Zahlungsart

siehe unsere [Liefer- und Versandbedingungen](#)

Zuschläge

- Mindermengenzuschlag
- Trockeneiszuschlag
- Gefahrgutzuschlag
- Expressversand

SZABO-SCANDIC HandelsgmbH

Quellenstraße 110, A-1100 Wien

T. +43(0)1 489 3961-0

F. +43(0)1 489 3961-7

mail@szabo-scandic.com

www.szabo-scandic.com

[linkedin.com/company/szaboscandic](https://www.linkedin.com/company/szaboscandic) 

GP1BA (Human) Matched Antibody Pair

Catalog # : H00002811-AP41

規格 : [1 Set]

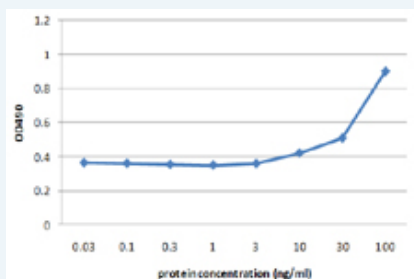
[List All](#)

Specification

Product Description: This antibody pair set comes with matched antibody pair to detect and quantify protein level of human GP1BA.

Reactivity: Human

Quality Control Testing: Standard curve using recombinant protein (H00002811-Q01) as an analyte.



Sandwich ELISA detection sensitivity ranging from 10 ng/ml to 100 ng/ml.

Supplied Product: Antibody pair set content:
 1. Capture antibody: mouse monoclonal anti-GP1BA, IgG2a Kappa (100 ug)
 2. Detection antibody: biotinylated mouse monoclonal anti-GP1BA, IgG2a Kappa (50 ug)
 *Reagents are sufficient for at least 3-5 x 96 well plates using recommended protocols.

Storage Instruction: Store reagents of the antibody pair set at -20°C or lower. Please aliquot to avoid repeated freeze thaw cycle. Reagents should be returned to -20°C storage immediately after use.

MSDS:  [Download](#)

Applications

ELISA Pair (Recombinant protein)

 [Protocol Download](#)

Gene Information

Entrez GeneID: [2811](#)

Gene Name: GP1BA

Gene Alias: BSS,CD42B,CD42b-alpha,GP1B,MGC34595

Gene Description: glycoprotein Ib (platelet), alpha polypeptide

Omim ID: [177820](#), [231200](#), [258660](#), [606672](#)

Gene Ontology: [Hyperlink](#)

Application Image

ELISA Pair (Recombinant protein)

Gene Summary: Glycoprotein Ib (GP Ib) is a platelet surface membrane glycoprotein composed of a heterodimer, an alpha chain and a beta chain, that are linked by disulfide bonds. The Gp Ib functions as a receptor for von Willebrand factor (VWF). The complete receptor complex includes noncovalent association of the alpha and beta subunits with platelet glycoprotein IX and platelet glycoprotein V. The binding of the GP Ib-IX-V complex to VWF facilitates initial platelet adhesion to vascular subendothelium after vascular injury, and also initiates signaling events within the platelet that lead to enhanced platelet activation, thrombosis, and hemostasis. This gene encodes the alpha subunit. Several polymorphisms and mutations have been described in this gene, some of which are the cause of Bernard-Soulier syndromes and platelet-type von Willebrand disease. [provided by RefSeq]

Other Designations: platelet glycoprotein Ib alpha polypeptide,platelet membrane glycoprotein 1b-alpha subunit

Interactome



Gene Pathway

[ECM-receptor interaction](#) [Hematopoietic cell lineage](#)

Related Disease

[Acute Chest Syndrome](#) [Acute Disease](#) [Anemia](#), [Sickle Cell Anemia](#), [sickle cell Aneurysm](#), [Ruptured Angina](#), [Unstable Antiphospholipid Syndrome](#), [Arterial Occlusive Diseases](#), [Arteriosclerosis](#), [Atherosclerosis](#), [Atherosclerosis](#), [Bernard-Soulier Syndrome](#), [Blood Platelet Disorders](#), [Brain Ischemia](#), [Carcinoma, Squamous Cell](#), [Cardiovascular Diseases](#), [Carotid Artery Diseases](#), [Carotid Stenosis](#), [Cerebral Hemorrhage](#)

... see more