



SZABO SCANDIC

Part of Europa Biosite

Produktinformation



Forschungsprodukte & Biochemikalien



Zellkultur & Verbrauchsmaterial



Diagnostik & molekulare Diagnostik



Laborgeräte & Service

Weitere Information auf den folgenden Seiten!
See the following pages for more information!



Lieferung & Zahlungsart

siehe unsere [Liefer- und Versandbedingungen](#)

Zuschläge

- Mindermengenzuschlag
- Trockeneiszuschlag
- Gefahrgutzuschlag
- Expressversand

SZABO-SCANDIC HandelsgmbH

Quellenstraße 110, A-1100 Wien

T. +43(0)1 489 3961-0

F. +43(0)1 489 3961-7

mail@szabo-scandic.com

www.szabo-scandic.com

[linkedin.com/company/szaboscandic](https://www.linkedin.com/company/szaboscandic) 

GP1BA (Human) IP-WB Antibody Pair

Catalog # : H00002811-PW1

規格 : [1 Set]

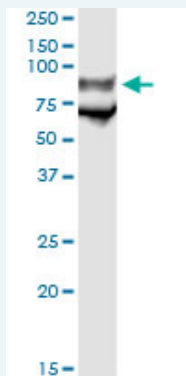
[List All](#)

Specification

Product Description: This IP-WB antibody pair set comes with one antibody for immunoprecipitation and another to detect the precipitated protein in western blot.

Reactivity: Human

Quality Control Testing: Immunoprecipitation-Western Blot (IP-WB)



Immunoprecipitation of GP1BA transfected lysate using mouse monoclonal anti-GP1BA and Protein A Magnetic Bead ([U0007](#)), and immunoblotted with rabbit polyclonal anti-GP1BA.

Supplied Product: Antibody pair set content:
1. Antibody pair for IP: mouse monoclonal anti-GP1BA (300 ug)
2. Antibody pair for WB: rabbit polyclonal anti-GP1BA (50 ul)

Storage Instruction: Store reagents of the antibody pair set at -20°C or lower. Please aliquot to avoid repeated freeze thaw cycle. Reagents should be returned to -20°C storage immediately after use.

MSDS:  [Download](#)

Applications

Immunoprecipitation-Western Blot

 [Protocol Download](#)

Gene Information

Entrez GeneID: [2811](#)

Gene Name: GP1BA

Gene Alias: BSS,CD42B,CD42b-alpha,GP1B,MGC34595

Gene Description: glycoprotein Ib (platelet), alpha polypeptide

Omim ID: [177820](#), [231200](#), [258660](#), [606672](#)

Gene Ontology: [Hyperlink](#)

Application Image

Immunoprecipitation-Western Blot

Gene Summary: Glycoprotein Ib (GP Ib) is a platelet surface membrane glycoprotein composed of a heterodimer, an alpha chain and a beta chain, that are linked by disulfide bonds. The Gp Ib functions as a receptor for von Willebrand factor (VWF). The complete receptor complex includes noncovalent association of the alpha and beta subunits with platelet glycoprotein IX and platelet glycoprotein V. The binding of the GP Ib-IX-V complex to VWF facilitates initial platelet adhesion to vascular subendothelium after vascular injury, and also initiates signaling events within the platelet that lead to enhanced platelet activation, thrombosis, and hemostasis. This gene encodes the alpha subunit. Several polymorphisms and mutations have been described in this gene, some of which are the cause of Bernard-Soulier syndromes and platelet-type von Willebrand disease. [provided by RefSeq]

Other Designations: platelet glycoprotein Ib alpha polypeptide,platelet membrane glycoprotein 1b-alpha subunit

Interactome



Gene Pathway

[ECM-receptor interaction](#) [Hematopoietic cell lineage](#)

Related Disease

[Acute Chest Syndrome](#) [Acute Disease](#) [Anemia](#), [Sickle Cell Anemia](#), [sickle cell Aneurysm](#), [Ruptured Angina](#), [Unstable Antiphospholipid Syndrome](#) [Arterial Occlusive Diseases](#) [Arteriosclerosis](#) [Atherosclerosis](#) [Atherosclerosis](#) [Bernard-Soulier Syndrome](#) [Blood Platelet Disorders](#) [Brain Ischemia](#) [Carcinoma, Squamous Cell](#) [Cardiovascular Diseases](#) [Carotid Artery Diseases](#) [Carotid Stenosis](#) [Cerebral Hemorrhage](#)

... see more