



# SZABO SCANDIC

Part of Europa Biosite

## Produktinformation



Forschungsprodukte & Biochemikalien



Zellkultur & Verbrauchsmaterial



Diagnostik & molekulare Diagnostik



Laborgeräte & Service

Weitere Information auf den folgenden Seiten!  
See the following pages for more information!



### Lieferung & Zahlungsart

siehe unsere [Liefer- und Versandbedingungen](#)

### Zuschläge

- Mindermengenzuschlag
- Trockeneiszuschlag
- Gefahrgutzuschlag
- Expressversand

### SZABO-SCANDIC HandelsgmbH

Quellenstraße 110, A-1100 Wien

T. +43(0)1 489 3961-0

F. +43(0)1 489 3961-7

[mail@szabo-scandic.com](mailto:mail@szabo-scandic.com)

[www.szabo-scandic.com](http://www.szabo-scandic.com)

[linkedin.com/company/szaboscandic](https://www.linkedin.com/company/szaboscandic) 

## GPI (Human) Matched Antibody Pair

Catalog # : H00002821-AP22

規格 : [ 1 Set ]

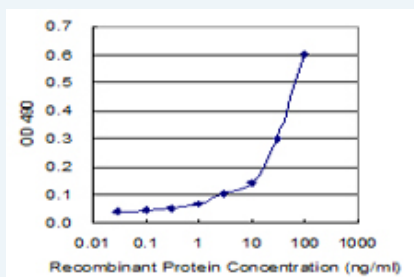
[List All](#)

### Specification

**Product Description:** This antibody pair set comes with matched antibody pair to detect and quantify protein level of human GPI.

**Reactivity:** Human

**Quality Control Testing:** Standard curve using recombinant protein ( H00002821-P01 ) as an analyte.



Sandwich ELISA detection sensitivity ranging from 3 ng/ml to 100 ng/ml.

**Supplied Product:** Antibody pair set content:  
 1. Capture antibody: rabbit MaxPab® affinity purified polyclonal anti-GPI (100 ug)  
 2. Detection antibody: mouse purified polyclonal anti-GPI (20 ug)  
 \*Reagents are sufficient for at least 1-2 x 96 well plates using recommended protocols.

**Storage Instruction:** Store reagents of the antibody pair set at -20°C or lower. Please aliquot to avoid repeated freeze thaw cycle. Reagents should be returned to -20°C storage immediately after use.

**MSDS:**  [Download](#)

### Applications

ELISA Pair (Recombinant protein)

 [Protocol Download](#)

### Gene Information

**Entrez GeneID:** [2821](#)

**Gene Name:** GPI

**Gene Alias:** AMF,GNPI,NLK,PGI,PHI,SA-36

**Gene Description:** glucose phosphate isomerase

**Omim ID:** [172400](#)

**Gene Ontology:** [Hyperlink](#)

**Gene Summary:** This gene belongs to the GPI family whose members encode multifunctional phosphoglucose isomerase proteins involved in energy pathways. The protein encoded by this gene is a dimeric enzyme that catalyzes the reversible isomerization of glucose-6-phosphate and fructose-6-phosphate. The protein functions in different capacities inside and outside the cell. In the cytoplasm, the gene product is involved in glycolysis and gluconeogenesis, while outside the cell it functions as a neurotrophic factor for spinal and sensory neurons. Defects in this gene are the cause of nonspherocytic hemolytic anemia and a severe enzyme deficiency can be associated with hydrops fetalis, immediate neonatal death and neurological impairment. [provided by RefSeq]

**Other Designations:** autocrine motility factor, glucose-6-phosphate isomerase, hexose monophosphate isomerase, hexosephosphate isomerase, neuroleukin, oxoisomerase, phosphoglucose isomerase, phosphohexomutase, phosphohexose isomerase, phosphosaccharomutase, sperm antigen-36

### Gene Pathway

[Amino sugar and nucleotide sugar metabolism](#)  
[Biosynthesis of alkaloids derived from histidine and purine](#)  
[Biosynthesis of alkaloids derived from ornithine, lysine and nicotinic acid](#)  
[Biosynthesis of alkaloids derived from shikimate pathway](#)  
[Biosynthesis of alkaloids derived from terpenoid and polyketide](#)  
[Biosynthesis of phenylpropanoids](#) [Biosynthesis of plant hormones](#)  
[Biosynthesis of terpenoids and steroids](#) [Glycolysis / Gluconeogenesis](#) [Metabolic pathways](#)  
[Pentose phosphate pathway](#) [Starch and sucrose metabolism](#)

[服務條款](#) | [隱私權政策](#) | [著作及商標](#) | [網站地圖](#)

©2016 亞諾法生技股份有限公司 Abnova Corporation. 版權所有.