



# SZABO SCANDIC

Part of Europa Biosite

## Produktinformation



Forschungsprodukte & Biochemikalien



Zellkultur & Verbrauchsmaterial



Diagnostik & molekulare Diagnostik



Laborgeräte & Service

Weitere Information auf den folgenden Seiten!  
See the following pages for more information!



### Lieferung & Zahlungsart

siehe unsere [Liefer- und Versandbedingungen](#)

### Zuschläge

- Mindermengenzuschlag
- Trockeneiszuschlag
- Gefahrgutzuschlag
- Expressversand

### SZABO-SCANDIC HandelsgmbH

Quellenstraße 110, A-1100 Wien

T. +43(0)1 489 3961-0

F. +43(0)1 489 3961-7

[mail@szabo-scandic.com](mailto:mail@szabo-scandic.com)

[www.szabo-scandic.com](http://www.szabo-scandic.com)

[linkedin.com/company/szaboscandic](https://www.linkedin.com/company/szaboscandic) 

## GRIN2C (Human) Matched Antibody Pair

Catalog # : H00002905-AP21

規格 : [ 1 Set ]

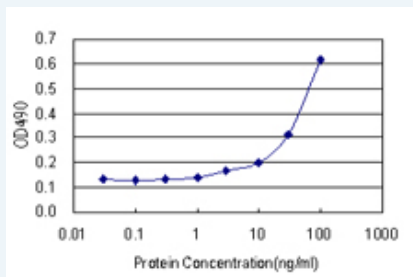
[List All](#)

### Specification

**Product Description:** This antibody pair set comes with matched antibody pair to detect and quantify protein level of human GRIN2C.

**Reactivity:** Human

**Quality Control Testing:** Standard curve using recombinant protein ( H00002905-P01 ) as an analyte.



Sandwich ELISA detection sensitivity ranging from 1 ng/ml to 100 ng/ml.

**Supplied Product:** Antibody pair set content:  
 1. Capture antibody: rabbit MaxPab® affinity purified polyclonal anti-GRIN2C (100 ug)  
 2. Detection antibody: mouse polyclonal anti-GRIN2C (40 ul)  
 \*Reagents are sufficient for at least 3-5 x 96 well plates using recommended protocols.

**Storage Instruction:** Store reagents of the antibody pair set at -20°C or lower. Please aliquot to avoid repeated freeze thaw cycle. Reagents should be returned to -20°C storage immediately after use.

**MSDS:**  [Download](#)

### Applications

ELISA Pair (Recombinant protein)

 [Protocol Download](#)

### Gene Information

**Entrez GeneID:** [2905](#)

**Gene Name:** GRIN2C

**Gene Alias:** NMDAR2C, NR2C

**Gene Description:** glutamate receptor, ionotropic, N-methyl D-aspartate 2C

**Omim ID:** [138254](#)

**Gene Ontology:** [Hyperlink](#)

### Application Image

ELISA Pair (Recombinant protein)

**Gene Summary:** N-methyl-D-aspartate (NMDA) receptors are a class of ionotropic glutamate receptors. NMDA channel has been shown to be involved in long-term potentiation, an activity-dependent increase in the efficiency of synaptic transmission thought to underlie certain kinds of memory and learning. NMDA receptor channels are heteromers composed of the key receptor subunit NMDAR1 (GRIN1) and 1 or more of the 4 NMDAR2 subunits: NMDAR2A (GRIN2A), NMDAR2B (GRIN2B), NMDAR2C (GRIN2C), and NMDAR2D (GRIN2D).

**Other** N-methyl-D-aspartate receptor subunit 2C

**Designations:**

### Gene Pathway

[Alzheimer's disease](#) [Amyotrophic lateral sclerosis \(ALS\)](#) [Calcium signaling pathway](#)  
[Long-term potentiation](#) [Neuroactive ligand-receptor interaction](#)

### Related Disease

[Bipolar Disorder](#) [Cognition](#) [Disease Models, Animal](#) [Genetic Predisposition to Disease](#)  
[Schizophrenia](#) [Schizophrenia](#) [Schizophrenic Psychology](#) [Weight Gain](#)

[服務條款](#) | [隱私權政策](#) | [著作及商標](#) | [網站地圖](#)

©2016 亞諾法生技股份有限公司 Abnova Corporation. 版權所有.