



SZABO SCANDIC

Part of Europa Biosite

Produktinformation



Forschungsprodukte & Biochemikalien



Zellkultur & Verbrauchsmaterial



Diagnostik & molekulare Diagnostik



Laborgeräte & Service

Weitere Information auf den folgenden Seiten!
See the following pages for more information!



Lieferung & Zahlungsart

siehe unsere [Liefer- und Versandbedingungen](#)

Zuschläge

- Mindermengenzuschlag
- Trockeneiszuschlag
- Gefahrgutzuschlag
- Expressversand

SZABO-SCANDIC HandelsgmbH

Quellenstraße 110, A-1100 Wien

T. +43(0)1 489 3961-0

F. +43(0)1 489 3961-7

mail@szabo-scandic.com

www.szabo-scandic.com

[linkedin.com/company/szaboscandic](https://www.linkedin.com/company/szaboscandic) 

GUCY1A3 (Human) IP-WB Antibody Pair

Catalog # : H00002982-PW1

規格 : [1 Set]

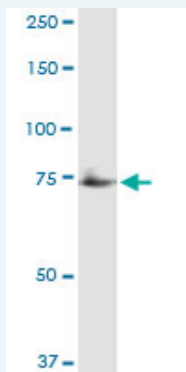
List All

Specification

Product Description: This IP-WB antibody pair set comes with one antibody for immunoprecipitation and another to detect the precipitated protein in western blot.

Reactivity: Human

Quality Control Testing: Immunoprecipitation-Western Blot (IP-WB)



Immunoprecipitation of GUCY1A3 transfected lysate using rabbit polyclonal anti-GUCY1A3 and Protein A Magnetic Bead (U000Z), and immunoblotted with mouse purified polyclonal anti-GUCY1A3.

Supplied Product: Antibody pair set content:
 1. Antibody pair for IP: rabbit polyclonal anti-GUCY1A3 (300 ul)
 2. Antibody pair for WB: mouse purified polyclonal anti-GUCY1A3 (50 ug)

Storage Instruction: Store reagents of the antibody pair set at -20°C or lower. Please aliquot to avoid repeated freeze thaw cycle. Reagents should be returned to -20°C storage immediately after use.

MSDS:  [Download](#)

Applications

Immunoprecipitation-Western Blot

 [Protocol Download](#)

Gene Information

Entrez GeneID: [2982](#)

Gene Name: GUCY1A3

Gene Alias: GC-SA3, GUC1A3, GUCA3, GUCSA3, GUCY1A1

Gene Description: guanylate cyclase 1, soluble, alpha 3

Omim ID: [139396](#)

Application Image

Immunoprecipitation-Western Blot

Gene Ontology: [Hyperlink](#)

Gene Summary: Soluble guanylate cyclase (sGC), a heterodimeric protein consisting of an alpha subunit, such as alpha-1 (GUCY1A3), and a beta subunit, typically beta-1 (GUCY1B3; MIM 139397), catalyzes conversion of GTP to the second messenger cGMP and functions as the main receptor for nitric oxide and nitrovasodilator drugs (Zabel et al., 1998 [PubMed 9742212]).[supplied by OMIM

Other Designations: GC-S-alpha-1,soluble guanylate cyclase large subunit

Gene Pathway

[Gap junction](#) [Long-term depression](#) [Purine metabolism](#)
[Vascular smooth muscle contraction](#)

[服務條款](#) | [隱私權政策](#) | [著作及商標](#) | [網站地圖](#)

©2016 亞諾法生技股份有限公司 Abnova Corporation. 版權所有.