



SZABO SCANDIC

Part of Europa Biosite

Produktinformation



Forschungsprodukte & Biochemikalien



Zellkultur & Verbrauchsmaterial



Diagnostik & molekulare Diagnostik



Laborgeräte & Service

Weitere Information auf den folgenden Seiten!
See the following pages for more information!



Lieferung & Zahlungsart

siehe unsere [Liefer- und Versandbedingungen](#)

Zuschläge

- Mindermengenzuschlag
- Trockeneiszuschlag
- Gefahrgutzuschlag
- Expressversand

SZABO-SCANDIC HandelsgmbH

Quellenstraße 110, A-1100 Wien

T. +43(0)1 489 3961-0

F. +43(0)1 489 3961-7

mail@szabo-scandic.com

www.szabo-scandic.com

[linkedin.com/company/szaboscandic](https://www.linkedin.com/company/szaboscandic) 

HLA-DMA (Human) IP-WB Antibody Pair

Catalog # : H00003108-PW2

規格 : [1 Set]

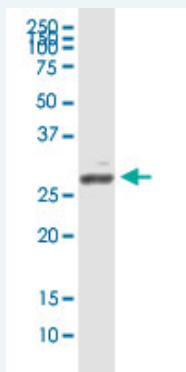
List All

Specification

Product Description: This IP-WB antibody pair set comes with one antibody for immunoprecipitation and another to detect the precipitated protein in western blot.

Reactivity: Human

Quality Control Testing: Immunoprecipitation-Western Blot (IP-WB)



Immunoprecipitation of HLA-DMA transfected lysate using rabbit polyclonal anti-HLA-DMA and Protein A Magnetic Bead (U0007), and immunoblotted with mouse purified polyclonal anti-HLA-DMA.

Supplied Product: Antibody pair set content:
 1. Antibody pair for IP: rabbit polyclonal anti-HLA-DMA (300 ul)
 2. Antibody pair for WB: mouse purified polyclonal anti-HLA-DMA (50 ug)

Storage Instruction: Store reagents of the antibody pair set at -20°C or lower. Please aliquot to avoid repeated freeze thaw cycle. Reagents should be returned to -20°C storage immediately after use.

Applications

Immunoprecipitation-Western Blot

 [Protocol Download](#)

Gene Information

Entrez GeneID: [3108](#)

Gene Name: HLA-DMA

Gene Alias: D6S222E,DMA,HLADM,RING6

Gene Description: major histocompatibility complex, class II, DM alpha

Omim ID: [142855](#)

Gene Ontology: [Hyperlink](#)

Gene Summary: HLA-DMA belongs to the HLA class II alpha chain paralogues. This class II molecule is a heterodimer consisting of an alpha (DMA) and a beta chain (DMB), both anchored in the membrane. It is located in intracellular vesicles. DM plays a central role in the peptide loading of MHC class II molecules by helping to release the CLIP molecule from the peptide binding site. Class II molecules are expressed in antigen presenting cells (APC: B lymphocytes, dendritic cells, macrophages). The alpha chain is approximately 33-35 kDa and its gene contains 5 exons. Exon one encodes the leader peptide, exons 2 and 3 encode the two extracellular domains, exon 4 encodes the transmembrane domain and the cytoplasmic tail. [provided by RefSeq]

Other OTTHUMP00000029242, OTTHUMP00000062997, class II
Designations: histocompatibility antigen, M alpha chain

Gene Pathway

[Allograft rejection](#) [Antigen processing and presentation](#) [Asthma](#)
[Autoimmune thyroid disease](#) [Cell adhesion molecules \(CAMs\)](#) [Graft-versus-host disease](#)
[Systemic lupus erythematosus](#) [Type I diabetes mellitus](#)

Related Disease

[Acquired Immunodeficiency Syndrome](#) [AIDS-Related Opportunistic Infections](#)
[Antiphospholipid Syndrome](#) [Arthritis, Rheumatoid](#) [Cardiovascular Diseases](#)
[Condylomata Acuminata](#) [Dermatitis, Contact](#) [Dermatitis, Occupational](#)
[Diabetes Mellitus, Type 2](#) [Disease Progression](#) [Edema](#) [Genetic Predisposition to Disease](#)
[HIV Seropositivity](#) [Lupus Erythematosus, Systemic](#) [Malaria](#) [Measles](#) [Multiple Sclerosis](#)
[Mycobacterium avium-intracellulare Infection](#) [Psoriasis](#)

[服務條款](#) | [隱私權政策](#) | [著作及商標](#) | [網站地圖](#)

©2016 亞諾法生技股份有限公司 Abnova Corporation. 版權所有.