



# SZABO SCANDIC

Part of Europa Biosite

## Produktinformation



Forschungsprodukte & Biochemikalien



Zellkultur & Verbrauchsmaterial



Diagnostik & molekulare Diagnostik



Laborgeräte & Service

Weitere Information auf den folgenden Seiten!  
See the following pages for more information!



### Lieferung & Zahlungsart

siehe unsere [Liefer- und Versandbedingungen](#)

### Zuschläge

- Mindermengenzuschlag
- Trockeneiszuschlag
- Gefahrgutzuschlag
- Expressversand

### SZABO-SCANDIC HandelsgmbH

Quellenstraße 110, A-1100 Wien

T. +43(0)1 489 3961-0

F. +43(0)1 489 3961-7

[mail@szabo-scandic.com](mailto:mail@szabo-scandic.com)

[www.szabo-scandic.com](http://www.szabo-scandic.com)

[linkedin.com/company/szaboscandic](https://www.linkedin.com/company/szaboscandic) 

## HSPB1 (Human) Matched Antibody Pair

Catalog # : H00003315-AP51

規格 : [ 1 Set ]

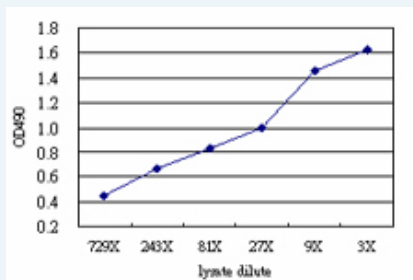
[List All](#)

### Specification

**Product Description:** This antibody pair set comes with matched antibody pair to detect and quantify protein level of human HSPB1.

**Reactivity:** Human

**Quality Control Testing:** Standard curve using HSPB1 293T overexpression lysate (non-denatured) as an analyte.



Sandwich ELISA detection sensitivity ranging from approximately 729x to 3x dilution of the HSPB1 293T overexpression lysate (non-denatured).

**Supplied Product:** Antibody pair set content:  
 1. Capture antibody: mouse monoclonal anti-HSPB1 (100 ug)  
 2. Detection antibody: rabbit purified polyclonal anti-HSPB1 (50 ug)  
 \*Reagents are sufficient for at least 3-5 x 96 well plates using recommended protocols.

**Storage Instruction:** Store reagents of the antibody pair set at -20°C or lower. Please aliquot to avoid repeated freeze thaw cycle. Reagents should be returned to -20°C storage immediately after use.

**MSDS:**  [Download](#)

### Applications

ELISA Pair (Transfected lysate)

 [Protocol Download](#)

### Gene Information

**Entrez GeneID:** [3315](#)

**Gene Name:** HSPB1

**Gene Alias:** CMT2F, DKFZp586P1322, HMN2B, HS.76067, HSP27, HSP28, Hsp25, SRP27

**Gene Description:** heat shock 27kDa protein 1

**Omim ID:** [602195](#), [606595](#), [608634](#)

**Gene Ontology:** [Hyperlink](#)

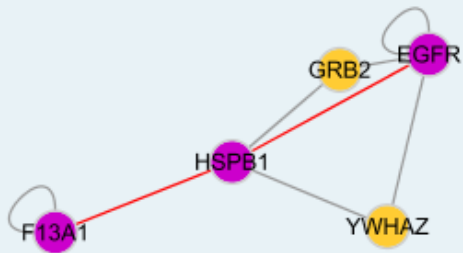
### Application Image

ELISA Pair (Transfected lysate)

**Gene Summary:** The protein encoded by this gene is induced by environmental stress and developmental changes. The encoded protein is involved in stress resistance and actin organization and translocates from the cytoplasm to the nucleus upon stress induction. Defects in this gene are a cause of Charcot-Marie-Tooth disease type 2F (CMT2F) and distal hereditary motor neuropathy (dHMN). [provided by RefSeq]

**Other Designations:** OTTHUMP00000024846,estrogen-regulated 24 kDa protein,heat shock 27kD protein 1,heat shock protein beta-1,stress-responsive protein 27

### Interactome



### Gene Pathway

[MAPK signaling pathway](#) [VEGF signaling pathway](#)

### Related Disease

[Adenocarcinoma](#) [Carcinoma, Non-Small-Cell Lung](#) [Carcinoma, Squamous Cell](#)  
[Charcot-Marie-Tooth Disease](#) [Diabetic Nephropathies](#) [Genetic Predisposition to Disease](#)  
[Lung Neoplasms](#) [Small Cell Lung Carcinoma](#)

[服務條款](#) | [隱私權政策](#) | [著作及商標](#) | [網站地圖](#)

©2016 亞諾法生技股份有限公司 Abnova Corporation. 版權所有.