



SZABO SCANDIC

Part of Europa Biosite

Produktinformation



Forschungsprodukte & Biochemikalien



Zellkultur & Verbrauchsmaterial



Diagnostik & molekulare Diagnostik



Laborgeräte & Service

Weitere Information auf den folgenden Seiten!
See the following pages for more information!



Lieferung & Zahlungsart

siehe unsere [Liefer- und Versandbedingungen](#)

Zuschläge

- Mindermengenzuschlag
- Trockeneiszuschlag
- Gefahrgutzuschlag
- Expressversand

SZABO-SCANDIC HandelsgmbH

Quellenstraße 110, A-1100 Wien

T. +43(0)1 489 3961-0

F. +43(0)1 489 3961-7

mail@szabo-scandic.com

www.szabo-scandic.com

[linkedin.com/company/szaboscandic](https://www.linkedin.com/company/szaboscandic) 

HSPB1 (Human) IP-WB Antibody Pair

Catalog # : H00003315-PW1

規格 : [1 Set]

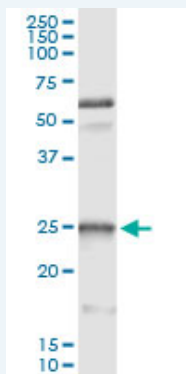
[List All](#)

Specification

Product Description: This IP-WB antibody pair set comes with one antibody for immunoprecipitation and another to detect the precipitated protein in western blot.

Reactivity: Human

Quality Control Testing: Immunoprecipitation-Western Blot (IP-WB)



Immunoprecipitation of HSPB1 transfected lysate using mouse monoclonal anti-HSPB1 and Protein A Magnetic Bead ([U0007](#)), and immunoblotted with rabbit polyclonal anti-HSPB1.

Supplied Product: Antibody pair set content:
1. Antibody pair for IP: mouse monoclonal anti-HSPB1 (300 ug)
2. Antibody pair for WB: rabbit polyclonal anti-HSPB1 (50 ul)

Storage Instruction: Store reagents of the antibody pair set at -20°C or lower. Please aliquot to avoid repeated freeze thaw cycle. Reagents should be returned to -20°C storage immediately after use.

MSDS:  [Download](#)

Applications

Immunoprecipitation-Western Blot

 [Protocol Download](#)

Gene Information

Entrez GeneID: [3315](#)

Gene Name: HSPB1

Gene Alias: CMT2F, DKFZp586P1322, HMN2B, HS.76067, HSP27, HSP28, Hsp25, SRP27

Gene Description: heat shock 27kDa protein 1

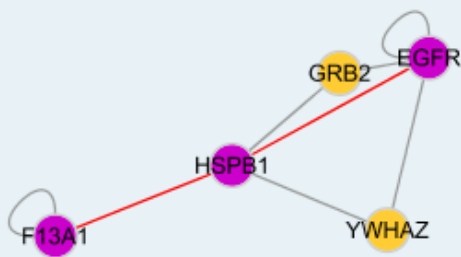
Omim ID: [602195](#), [606595](#), [608634](#)

Gene Ontology: [Hyperlink](#)

Gene Summary: The protein encoded by this gene is induced by environmental stress and developmental changes. The encoded protein is involved in stress resistance and actin organization and translocates from the cytoplasm to the nucleus upon stress induction. Defects in this gene are a cause of Charcot-Marie-Tooth disease type 2F (CMT2F) and distal hereditary motor neuropathy (dHMN). [provided by RefSeq]

Other Designations: OTTHUMP00000024846,estrogen-regulated 24 kDa protein,heat shock 27kD protein 1,heat shock protein beta-1,stress-responsive protein 27

Interactome



Gene Pathway

[MAPK signaling pathway](#) [VEGF signaling pathway](#)

Related Disease

[Adenocarcinoma](#) [Carcinoma, Non-Small-Cell Lung](#) [Carcinoma, Squamous Cell](#)
[Charcot-Marie-Tooth Disease](#) [Diabetic Nephropathies](#) [Genetic Predisposition to Disease](#)
[Lung Neoplasms](#) [Small Cell Lung Carcinoma](#)

[服務條款](#) | [隱私權政策](#) | [著作及商標](#) | [網站地圖](#)

©2016 亞諾法生技股份有限公司 Abnova Corporation. 版權所有.