



# SZABO SCANDIC

Part of Europa Biosite

## Produktinformation



Forschungsprodukte & Biochemikalien



Zellkultur & Verbrauchsmaterial



Diagnostik & molekulare Diagnostik



Laborgeräte & Service

Weitere Information auf den folgenden Seiten!  
See the following pages for more information!



### Lieferung & Zahlungsart

siehe unsere [Liefer- und Versandbedingungen](#)

### Zuschläge

- Mindermengenzuschlag
- Trockeneiszuschlag
- Gefahrgutzuschlag
- Expressversand

### SZABO-SCANDIC HandelsgmbH

Quellenstraße 110, A-1100 Wien

T. +43(0)1 489 3961-0

F. +43(0)1 489 3961-7

[mail@szabo-scandic.com](mailto:mail@szabo-scandic.com)

[www.szabo-scandic.com](http://www.szabo-scandic.com)

[linkedin.com/company/szaboscandic](https://www.linkedin.com/company/szaboscandic) 

## IFNA1 (Human) Matched Antibody Pair

Catalog # : H00003439-AP51

規格 : [ 1 Set ]

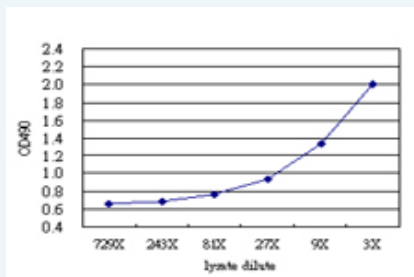
[List All](#)

### Specification

**Product Description:** This antibody pair set comes with matched antibody pair to detect and quantify protein level of human IFNA1.

**Reactivity:** Human

**Quality Control Testing:** Standard curve using IFNA1 293T overexpression lysate (non-denatured) as an analyte.



Sandwich ELISA detection sensitivity ranging from approximately 27x to 3x dilution of the IFNA1 293T overexpression lysate (non-denatured).

**Supplied Product:** Antibody pair set content:  
 1. Capture antibody: mouse monoclonal anti-IFNA1 (100 ug)  
 2. Detection antibody: rabbit purified polyclonal anti-IFNA1 (50 ug)  
 \*Reagents are sufficient for at least 3-5 x 96 well plates using recommended protocols.

**Storage Instruction:** Store reagents of the antibody pair set at -20°C or lower. Please aliquot to avoid repeated freeze thaw cycle. Reagents should be returned to -20°C storage immediately after use.

**MSDS:**  [Download](#)

### Applications

ELISA Pair (Transfected lysate)

 [Protocol Download](#)

### Gene Information

**Entrez GeneID:** [3439](#)

**Gene Name:** IFNA1

**Gene Alias:** IFL,IFN,IFN-ALPHA,IFNA13,IFNA@,MGC138207,MGC138505,MGC138507

**Gene Description:** interferon, alpha 1

**Omim ID:** [147660](#)

**Gene Ontology:** [Hyperlink](#)

### Application Image

ELISA Pair (Transfected lysate)

**Gene Summary:** Leukocyte interferon is produced predominantly by B lymphocytes. Immune interferon (IFN-gamma; MIM 147570) is produced by mitogen- or antigen-stimulated T lymphocytes.[supplied by OMIM

**Other Designations:** IFN-alpha 1b,OTTHUMP00000045110,interferon alpha 1b

### Gene Pathway

[Antigen processing and presentation](#) [Autoimmune thyroid disease](#)  
[Cytokine-cytokine receptor interaction](#) [Jak-STAT signaling pathway](#)  
[Natural killer cell mediated cytotoxicity](#) [Regulation of autophagy](#)  
[Toll-like receptor signaling pathway](#)

### Related Disease

[Acute Disease](#) [Arthritis, Juvenile Rheumatoid](#) [Asthma](#) [Asthma](#) [Behcet Syndrome](#)  
[Bronchiolitis, Viral](#) [Cardiovascular Diseases](#) [Communicable Diseases](#)  
[Diabetes Mellitus, Type 2](#) [Edema](#) [Genetic Predisposition to Disease](#) [Graft vs Host Disease](#)  
[Hepatitis C](#) [Hepatitis C, Chronic](#) [Infant, Premature, Diseases](#) [Irritable Bowel Syndrome](#)  
[Liver Cirrhosis](#) [Lupus Erythematosus, Systemic](#) [Lymphoma, Large B-Cell, Diffuse](#)

... see more

[服務條款](#) | [隱私權政策](#) | [著作及商標](#) | [網站地圖](#)

©2016 亞諾法生技股份有限公司 Abnova Corporation. 版權所有.