



SZABO SCANDIC

Part of Europa Biosite

Produktinformation



Forschungsprodukte & Biochemikalien



Zellkultur & Verbrauchsmaterial



Diagnostik & molekulare Diagnostik



Laborgeräte & Service

Weitere Information auf den folgenden Seiten!
See the following pages for more information!



Lieferung & Zahlungsart

siehe unsere [Liefer- und Versandbedingungen](#)

Zuschläge

- Mindermengenzuschlag
- Trockeneiszuschlag
- Gefahrgutzuschlag
- Expressversand

SZABO-SCANDIC HandelsgmbH

Quellenstraße 110, A-1100 Wien

T. +43(0)1 489 3961-0

F. +43(0)1 489 3961-7

mail@szabo-scandic.com

www.szabo-scandic.com

[linkedin.com/company/szaboscandic](https://www.linkedin.com/company/szaboscandic) 

IL1A (Human) Matched Antibody Pair

Catalog # : H00003552-AP11

規格 : [1 Set]

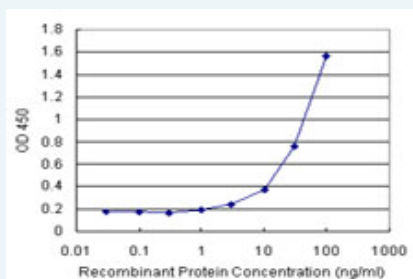
[List All](#)

Specification

Product Description: This antibody pair set comes with matched antibody pair to detect and quantify protein level of human IL1A.

Reactivity: Human

Quality Control Testing: Standard curve using recombinant protein (H00003552-P01) as an analyte.



Sandwich ELISA detection sensitivity ranging from 1 ng/ml to 100 ng/ml.

Supplied Product: Antibody pair set content:
 1. Capture antibody: rabbit MaxPab® affinity purified polyclonal anti-IL1A (100 ug)
 2. Detection antibody: mouse monoclonal anti-IL1A, IgG1 Kappa (20 ug)
 *Reagents are sufficient for at least 1-2 x 96 well plates using recommended protocols.

Storage Instruction: Store reagents of the antibody pair set at -20°C or lower. Please aliquot to avoid repeated freeze thaw cycle. Reagents should be returned to -20°C storage immediately after use.

MSDS:  [Download](#)

Applications

ELISA Pair (Recombinant protein)

 [Protocol Download](#)

Gene Information

Entrez GeneID: [3552](#)

Gene Name: IL1A

Gene Alias: IL-1A,IL1,IL1-ALPHA,IL1F1

Gene Description: interleukin 1, alpha

Omim ID: [147760](#)

Gene Ontology: [Hyperlink](#)

Gene Summary: The protein encoded by this gene is a member of the interleukin 1 cytokine family. This cytokine is a pleiotropic cytokine involved in various immune responses, inflammatory processes, and hematopoiesis. This cytokine is produced by monocytes and macrophages as a proprotein, which is proteolytically processed and released in response to cell injury, and thus induces apoptosis. This gene and eight other interleukin 1 family genes form a cytokine gene cluster on chromosome 2. It has been suggested that the polymorphism of these genes is associated with rheumatoid arthritis and Alzheimer's disease. [provided by RefSeq]

Other Designations: IL1A (IL1F1),hematopoietin-1,preinterleukin 1 alpha,pro-interleukin-1-alpha

Gene Pathway

[Apoptosis](#) [Cytokine-cytokine receptor interaction](#) [Graft-versus-host disease](#)
[Hematopoietic cell lineage](#) [MAPK signaling pathway](#) [Prion diseases](#) [Type I diabetes mellitus](#)

Related Disease

[Acquired Immunodeficiency Syndrome](#) [Acute Disease](#) [Adenocarcinoma](#)
[Aggressive Periodontitis](#) [AIDS](#) [Dementia](#) [Complex Alcoholism](#) [Alopecia Areata](#)
[Alveolar Bone Loss](#) [Alveolitis](#), [Extrinsic Allergic](#) [Alzheimer Disease](#) [Alzheimer disease](#)
[Angina Pectoris](#) [Angina](#), [Unstable](#) [Aortic Aneurysm](#), [Abdominal](#) [Arteriosclerosis](#) [Arthralgia](#)
[Arthritis](#) [Arthritis](#), [Juvenile Rheumatoid](#) [Arthritis](#), [Psoriatic](#)

... see more

[服務條款](#) | [隱私權政策](#) | [著作及商標](#) | [網站地圖](#)

©2016 亞諾法生技股份有限公司 Abnova Corporation. 版權所有.