



# SZABO SCANDIC

Part of Europa Biosite

## Produktinformation



Forschungsprodukte & Biochemikalien



Zellkultur & Verbrauchsmaterial



Diagnostik & molekulare Diagnostik



Laborgeräte & Service

Weitere Information auf den folgenden Seiten!  
See the following pages for more information!



### Lieferung & Zahlungsart

siehe unsere [Liefer- und Versandbedingungen](#)

### Zuschläge

- Mindermengenzuschlag
- Trockeneiszuschlag
- Gefahrgutzuschlag
- Expressversand

### SZABO-SCANDIC HandelsgmbH

Quellenstraße 110, A-1100 Wien

T. +43(0)1 489 3961-0

F. +43(0)1 489 3961-7

[mail@szabo-scandic.com](mailto:mail@szabo-scandic.com)

[www.szabo-scandic.com](http://www.szabo-scandic.com)

[linkedin.com/company/szaboscandic](https://www.linkedin.com/company/szaboscandic) 

## IL1B (Human) IP-WB Antibody Pair

Catalog # : H00003553-PW1

規格 : [ 1 Set ]

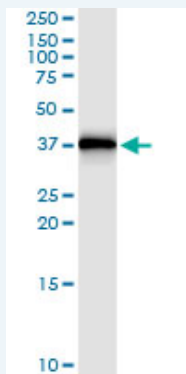
List All

### Specification

**Product Description:** This IP-WB antibody pair set comes with one antibody for immunoprecipitation and another to detect the precipitated protein in western blot.

**Reactivity:** Human

**Quality Control Testing:** Immunoprecipitation-Western Blot (IP-WB)



Immunoprecipitation of IL1B transfected lysate using rabbit polyclonal anti-IL1B and Protein A Magnetic Bead ([U0007](#)), and immunoblotted with mouse polyclonal anti-IL1B.

**Supplied Product:** Antibody pair set content:  
1. Antibody pair for IP: rabbit polyclonal anti-IL1B (300 ul)  
2. Antibody pair for WB: mouse polyclonal anti-IL1B (50 ul)

**Storage Instruction:** Store reagents of the antibody pair set at -20°C or lower. Please aliquot to avoid repeated freeze thaw cycle. Reagents should be returned to -20°C storage immediately after use.

**MSDS:**  [Download](#)

### Applications

Immunoprecipitation-Western Blot

 [Protocol Download](#)

### Gene Information

**Entrez GeneID:** [3553](#)

**Gene Name:** IL1B

**Gene Alias:** IL-1, IL1-BETA, IL1F2

**Gene Description:** interleukin 1, beta

**Omim ID:** [137215](#), [147720](#)

**Gene Ontology:** [Hyperlink](#)

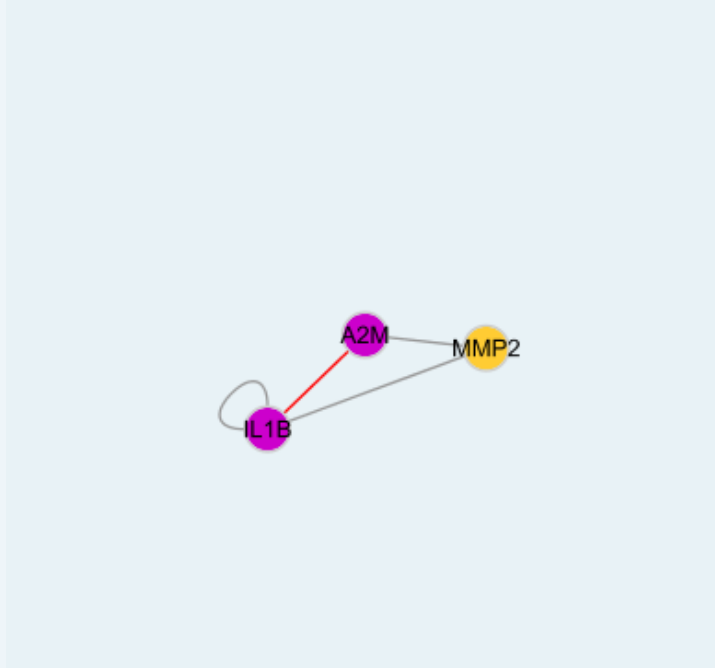
### Application Image

Immunoprecipitation-Western Blot

**Gene Summary:** The protein encoded by this gene is a member of the interleukin 1 cytokine family. This cytokine is produced by activated macrophages as a proprotein, which is proteolytically processed to its active form by caspase 1 (CASP1/ICE). This cytokine is an important mediator of the inflammatory response, and is involved in a variety of cellular activities, including cell proliferation, differentiation, and apoptosis. The induction of cyclooxygenase-2 (PTGS2/COX2) by this cytokine in the central nervous system (CNS) is found to contribute to inflammatory pain hypersensitivity. This gene and eight other interleukin 1 family genes form a cytokine gene cluster on chromosome 2. [provided by RefSeq]

**Other Designations:** catabolin,preinterleukin 1 beta,pro-interleukin-1-beta

### Interactome



### Gene Pathway

[Alzheimer's disease](#) [Apoptosis](#) [Cytokine-cytokine receptor interaction](#)  
[Graft-versus-host disease](#) [Hematopoietic cell lineage](#) [MAPK signaling pathway](#)  
[Prion diseases](#) [Toll-like receptor signaling pathway](#) [Type I diabetes mellitus](#)

### Related Disease

[Abortion, Habitual](#) [Abortion, Spontaneous](#) [Abscess](#) [Achlorhydria](#)  
[Acquired Immunodeficiency Syndrome](#) [Acute Disease](#) [Adenocarcinoma](#)  
[Adenomatous Polyps](#) [Aggressive Periodontitis](#) [AIDS Dementia](#) [Complex Albuminuria](#)  
[Alcoholism](#) [Alopecia Areata](#) [Alveolar Bone Loss](#) [Alzheimer Disease](#) [Alzheimer disease](#)  
[Amyloidosis](#) [Amyloidosis, Familial](#) [Anemia](#)

... see more