



# SZABO SCANDIC

Part of Europa Biosite

## Produktinformation



Forschungsprodukte & Biochemikalien



Zellkultur & Verbrauchsmaterial



Diagnostik & molekulare Diagnostik



Laborgeräte & Service

Weitere Information auf den folgenden Seiten!  
See the following pages for more information!



### Lieferung & Zahlungsart

siehe unsere [Liefer- und Versandbedingungen](#)

### Zuschläge

- Mindermengenzuschlag
- Trockeneiszuschlag
- Gefahrgutzuschlag
- Expressversand

### SZABO-SCANDIC HandelsgmbH

Quellenstraße 110, A-1100 Wien

T. +43(0)1 489 3961-0

F. +43(0)1 489 3961-7

[mail@szabo-scandic.com](mailto:mail@szabo-scandic.com)

[www.szabo-scandic.com](http://www.szabo-scandic.com)

[linkedin.com/company/szaboscandic](https://www.linkedin.com/company/szaboscandic) 

## IL1RAP (Human) IP-WB Antibody Pair

Catalog # : H00003556-PW1

規格 : [ 1 Set ]

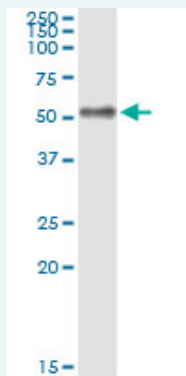
[List All](#)

### Specification

**Product Description:** This IP-WB antibody pair set comes with one antibody for immunoprecipitation and another to detect the precipitated protein in western blot.

**Reactivity:** Human

**Quality Control Testing:** Immunoprecipitation-Western Blot (IP-WB)



Immunoprecipitation of IL1RAP transfected lysate using mouse monoclonal anti-IL1RAP and Protein A Magnetic Bead ([U0007](#)), and immunoblotted with rabbit polyclonal anti-IL1RAP.

**Supplied Product:** Antibody pair set content:  
1. Antibody pair for IP: mouse monoclonal anti-IL1RAP (300 ug)  
2. Antibody pair for WB: rabbit polyclonal anti-IL1RAP (50 ul)

**Storage Instruction:** Store reagents of the antibody pair set at -20°C or lower. Please aliquot to avoid repeated freeze thaw cycle. Reagents should be returned to -20°C storage immediately after use.

**MSDS:**  [Download](#)

### Applications

**Immunoprecipitation-Western Blot**

 [Protocol Download](#)

### Gene Information

**Entrez GeneID:** [3556](#)

**Gene Name:** IL1RAP

**Gene Alias:** C3orf13,FLJ37788,IL-1RAcP,IL1R3

**Gene Description:** interleukin 1 receptor accessory protein

**Omim ID:** [602626](#)

**Gene Ontology:** [Hyperlink](#)

### Application Image

Immunoprecipitation-Western Blot

---

**Gene Summary:** Interleukin 1 induces synthesis of acute phase and proinflammatory proteins during infection, tissue damage, or stress, by forming a complex at the cell membrane with an interleukin 1 receptor and an accessory protein. This gene encodes an interleukin 1 receptor accessory protein. Alternative splicing of this gene results in two transcript variants encoding two different isoforms, one membrane-bound and one soluble. [provided by RefSeq]

---

**Other Designations:** interleukin-1 receptor accessory protein beta

---

### Gene Pathway

---

[Apoptosis](#) [Cytokine-cytokine receptor interaction](#)

### Related Disease

---

[Asthma](#) [Cardiovascular Diseases](#) [Celiac Disease](#) [Connective Tissue Diseases](#)  
[Crohn's disease](#) [Diabetes Mellitus, Type 1](#) [Diabetes Mellitus, Type 2](#) [Edema](#)  
[Fetal Diseases](#) [Genetic Predisposition to Disease](#) [Immune System Diseases](#) [Infection](#)  
[Inflammation](#) [Leukemia](#) [Musculoskeletal Diseases](#) [Placenta Diseases](#)  
[Postoperative Complications](#) [Pregnancy Complications, Hematologic](#) [Premature Birth](#)

... see more

---

[服務條款](#) | [隱私權政策](#) | [著作及商標](#) | [網站地圖](#)

©2016 亞諾法生技股份有限公司 Abnova Corporation. 版權所有.