



SZABO SCANDIC

Part of Europa Biosite

Produktinformation



Forschungsprodukte & Biochemikalien



Zellkultur & Verbrauchsmaterial



Diagnostik & molekulare Diagnostik



Laborgeräte & Service

Weitere Information auf den folgenden Seiten!
See the following pages for more information!



Lieferung & Zahlungsart

siehe unsere [Liefer- und Versandbedingungen](#)

Zuschläge

- Mindermengenzuschlag
- Trockeneiszuschlag
- Gefahrgutzuschlag
- Expressversand

SZABO-SCANDIC HandelsgmbH

Quellenstraße 110, A-1100 Wien

T. +43(0)1 489 3961-0

F. +43(0)1 489 3961-7

mail@szabo-scandic.com

www.szabo-scandic.com

[linkedin.com/company/szaboscandic](https://www.linkedin.com/company/szaboscandic) 

IL2RB (Human) IP-WB Antibody Pair

Catalog # : H00003560-PW1

規格 : [1 Set]

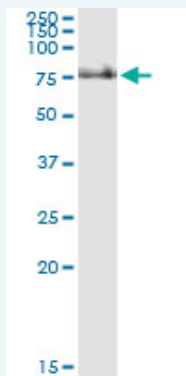
[List All](#)

Specification

Product Description: This IP-WB antibody pair set comes with one antibody for immunoprecipitation and another to detect the precipitated protein in western blot.

Reactivity: Human

Quality Control Testing: Immunoprecipitation-Western Blot (IP-WB)



Immunoprecipitation of IL2RB transfected lysate using rabbit polyclonal anti-IL2RB and Protein A Magnetic Bead (U0007), and immunoblotted with mouse purified polyclonal anti-IL2RB.

Supplied Product: Antibody pair set content:
 1. Antibody pair for IP: rabbit polyclonal anti-IL2RB (300 ul)
 2. Antibody pair for WB: mouse purified polyclonal anti-IL2RB (50 ug)

Storage Instruction: Store reagents of the antibody pair set at -20°C or lower. Please aliquot to avoid repeated freeze thaw cycle. Reagents should be returned to -20°C storage immediately after use.

MSDS:  [Download](#)

Applications

Immunoprecipitation-Western Blot

 [Protocol Download](#)

Gene Information

Entrez GeneID: [3560](#)

Gene Name: IL2RB

Gene Alias: CD122,P70-75

Gene Description: interleukin 2 receptor, beta

Omim ID: [146710](#)

Gene Ontology: [Hyperlink](#)

Application Image

Immunoprecipitation-Western Blot

Gene Summary: The interleukin 2 receptor, which is involved in T cell-mediated immune responses, is present in 3 forms with respect to ability to bind interleukin 2. The low affinity form is a monomer of the alpha subunit and is not involved in signal transduction. The intermediate affinity form consists of an alpha/beta subunit heterodimer, while the high affinity form consists of an alpha/beta/gamma subunit heterotrimer. Both the intermediate and high affinity forms of the receptor are involved in receptor-mediated endocytosis and transduction of mitogenic signals from interleukin 2. The protein encoded by this gene represents the beta subunit and is a type I membrane protein. [provided by RefSeq]

Other Designations: CD122 antigen, OTTHUMP00000028799, high affinity IL-2 receptor beta subunit, interleukin 2 receptor beta

Gene Pathway

[Cytokine-cytokine receptor interaction](#) [Endocytosis](#) [Jak-STAT signaling pathway](#)

Related Disease

[Arthritis, Rheumatoid](#) [Asthma](#) [Asthma](#) [Bipolar Disorder](#) [Bronchial Hyperreactivity](#) [Bronchiolitis, Viral](#) [Carcinoma, Hepatocellular](#) [Carcinoma, Non-Small-Cell Lung](#) [Cardiovascular Diseases](#) [Celiac Disease](#) [Chagas Disease](#) [Colitis, Ulcerative](#) [Connective Tissue Diseases](#) [Crohn Disease](#) [Crohn's disease](#) [Diabetes Mellitus, Type 2](#) [Disease Progression](#) [Edema](#) [Endometriosis](#)

... see more

[服務條款](#) | [隱私權政策](#) | [著作及商標](#) | [網站地圖](#)

©2016 亞諾法生技股份有限公司 Abnova Corporation. 版權所有.