



# SZABO SCANDIC

Part of Europa Biosite

## Produktinformation



Forschungsprodukte & Biochemikalien



Zellkultur & Verbrauchsmaterial



Diagnostik & molekulare Diagnostik



Laborgeräte & Service

Weitere Information auf den folgenden Seiten!  
See the following pages for more information!



### Lieferung & Zahlungsart

siehe unsere [Liefer- und Versandbedingungen](#)

### Zuschläge

- Mindermengenzuschlag
- Trockeneiszuschlag
- Gefahrgutzuschlag
- Expressversand

### SZABO-SCANDIC HandelsgmbH

Quellenstraße 110, A-1100 Wien

T. +43(0)1 489 3961-0

F. +43(0)1 489 3961-7

[mail@szabo-scandic.com](mailto:mail@szabo-scandic.com)

[www.szabo-scandic.com](http://www.szabo-scandic.com)

[linkedin.com/company/szaboscandic](https://www.linkedin.com/company/szaboscandic) 

## IL6 (Human) Matched Antibody Pair

Catalog # : H00003569-AP41

規格 : [ 1 Set ]

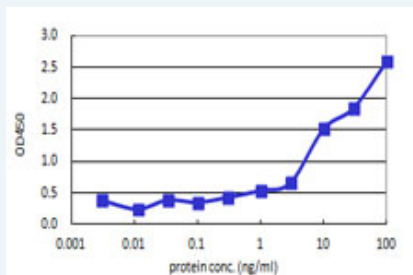
[List All](#)

### Specification

**Product Description:** This antibody pair set comes with matched antibody pair to detect and quantify protein level of human IL6.

**Reactivity:** Human

**Quality Control Testing:** Standard curve using recombinant protein as an analyte.



Sandwich ELISA detection sensitivity ranging from 0.1 ng/ml to 100 ng/ml.

**Supplied Product:** Antibody pair set content:  
 1. Capture antibody: mouse monoclonal anti-IL6, IgG2a Kappa (100 ug)  
 2. Detection antibody: biotinylated mouse monoclonal anti-IL6, IgG2b Kappa (50 ug)  
 \*Reagents are sufficient for at least 3-5 x 96 well plates using recommended protocols.

**Storage Instruction:** Store reagents of the antibody pair set at -20°C or lower. Please aliquot to avoid repeated freeze thaw cycle. Reagents should be returned to -20°C storage immediately after use.

### Applications

ELISA Pair (Recombinant protein)

 [Protocol Download](#)

### Gene Information

**Entrez GeneID:** [3569](#)

**Gene Name:** IL6

**Gene Alias:** BSF2,HGF,HSF,IFNB2,IL-6

**Gene Description:** interleukin 6 (interferon, beta 2)

**Omim ID:** [147620](#), [148000](#), [166710](#)

**Gene Ontology:** [Hyperlink](#)

**Gene Summary:** This gene encodes a cytokine that functions in inflammation and the maturation of B cells. The protein is primarily produced at sites of acute and chronic inflammation, where it is secreted into the serum and

induces a transcriptional inflammatory response through interleukin 6 receptor, alpha. The functioning of this gene is implicated in a wide variety of inflammation-associated disease states, including susceptibility to diabetes mellitus and systemic juvenile rheumatoid arthritis. [provided by RefSeq]

**Other** interleukin 6

**Designations:**

### Gene Pathway

[Cytokine-cytokine receptor interaction](#) [Graft-versus-host disease](#)  
[Hematopoietic cell lineage](#) [Hypertrophic cardiomyopathy \(HCM\)](#)  
[Jak-STAT signaling pathway](#) [Pathways in cancer](#) [Prion diseases](#)  
[Toll-like receptor signaling pathway](#)

### Related Disease

[Abortion, Habitual](#) [Abortion, Spontaneous](#) [Abscess](#) [Acquired Immunodeficiency Syndrome](#)  
[Acute Disease](#) [Acute Lung Injury](#) [Acute-Phase Reaction](#) [Adenocarcinoma](#)  
[Adenocarcinoma, Clear Cell](#) [Adenocarcinoma, Mucinous](#) [Adenoma](#) [Adenomatous Polyps](#)  
[Aggressive Periodontitis](#) [AIDS-Related Opportunistic Infections](#) [Alcoholism](#)  
[Alphavirus Infections](#) [Alveolar Bone Loss](#) [Alveolitis](#) [Extrinsic Allergic](#) [Alzheimer Disease](#)

... see more

[服務條款](#) | [隱私權政策](#) | [著作及商標](#) | [網站地圖](#)

©2016 亞諾法生技股份有限公司 Abnova Corporation. 版權所有.