



SZABO SCANDIC

Part of Europa Biosite

Produktinformation



Forschungsprodukte & Biochemikalien



Zellkultur & Verbrauchsmaterial



Diagnostik & molekulare Diagnostik



Laborgeräte & Service

Weitere Information auf den folgenden Seiten!
See the following pages for more information!



Lieferung & Zahlungsart

siehe unsere [Liefer- und Versandbedingungen](#)

Zuschläge

- Mindermengenzuschlag
- Trockeneiszuschlag
- Gefahrgutzuschlag
- Expressversand

SZABO-SCANDIC HandelsgmbH

Quellenstraße 110, A-1100 Wien

T. +43(0)1 489 3961-0

F. +43(0)1 489 3961-7

mail@szabo-scandic.com

www.szabo-scandic.com

[linkedin.com/company/szaboscandic](https://www.linkedin.com/company/szaboscandic) 

IL6R (Human) Matched Antibody Pair

Catalog # : H00003570-AP41

規格 : [1 Set]

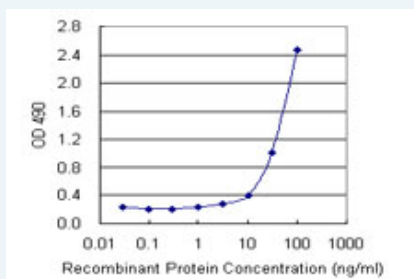
[List All](#)

Specification

Product Description: This antibody pair set comes with matched antibody pair to detect and quantify protein level of human IL6R.

Reactivity: Human

Quality Control Testing: Standard curve using recombinant protein (H00003570-Q01) as an analyte.



Sandwich ELISA detection sensitivity ranging from 1 ng/ml to 100 ng/ml.

Supplied Product: Antibody pair set content:
 1. Capture antibody: mouse monoclonal anti-IL6R (100 ug)
 2. Detection antibody: biotinylated mouse monoclonal anti-IL6R, IgG1 Kappa (50 ug)
 *Reagents are sufficient for at least 3-5 x 96 well plates using recommended protocols.

Storage Instruction: Store reagents of the antibody pair set at -20°C or lower. Please aliquot to avoid repeated freeze thaw cycle. Reagents should be returned to -20°C storage immediately after use.

MSDS:  [Download](#)

Applications

ELISA Pair (Recombinant protein)

 [Protocol Download](#)

Gene Information

Entrez GeneID: [3570](#)

Gene Name: IL6R

Gene Alias: CD126,IL-6R-1,IL-6R-alpha,IL6RA,MGC104991

Gene Description: interleukin 6 receptor

Omim ID: [147880](#)

Gene Ontology: [Hyperlink](#)

Gene Summary: Interleukin 6 (IL6) is a potent pleiotropic cytokine that regulates cell growth and differentiation and plays an important role in immune response. The protein encoded by this gene is a subunit of the receptor complex for IL6. The IL6 receptor is a protein complex consisting of this protein and interleukin 6 signal transducer (IL6ST/GP130/IL6-beta), a receptor subunit also shared by many other cytokines. Dysregulated production of IL6 and this receptor are implicated in the pathogenesis of many diseases, such as multiple myeloma, autoimmune diseases and prostate cancer. Alternatively spliced transcript variants encoding distinct isoforms have been reported. [provided by RefSeq]

Other Designations: CD126 antigen, OTTHUMP00000034320, interleukin 6 receptor alpha subunit

Gene Pathway

[Cytokine-cytokine receptor interaction](#) [Hematopoietic cell lineage](#)
[Jak-STAT signaling pathway](#)

Related Disease

[Abscess](#) [Adenocarcinoma](#) [Alzheimer Disease](#) [Alzheimer disease](#) [Arthritis, Rheumatoid](#)
[Asthma](#) [Asthma](#) [Atherosclerosis](#) [Autoimmune Diseases](#) [Behcet Syndrome](#)
[Bronchiolitis, Viral](#) [Carcinoma, Non-Small-Cell Lung](#) [Carcinoma, Squamous Cell](#)
[Cardiovascular Diseases](#) [Celiac Disease](#) [Chorioamnionitis](#) [Connective Tissue Diseases](#)
[Coronary Disease](#) [Crohn Disease](#)

... see more

[服務條款](#) | [隱私權政策](#) | [著作及商標](#) | [網站地圖](#)

©2016 亞諾法生技股份有限公司 Abnova Corporation. 版權所有.