



# SZABO SCANDIC

Part of Europa Biosite

## Produktinformation



Forschungsprodukte & Biochemikalien



Zellkultur & Verbrauchsmaterial



Diagnostik & molekulare Diagnostik



Laborgeräte & Service

Weitere Information auf den folgenden Seiten!  
See the following pages for more information!



### Lieferung & Zahlungsart

siehe unsere [Liefer- und Versandbedingungen](#)

### Zuschläge

- Mindermengenzuschlag
- Trockeneiszuschlag
- Gefahrgutzuschlag
- Expressversand

### SZABO-SCANDIC HandelsgmbH

Quellenstraße 110, A-1100 Wien

T. +43(0)1 489 3961-0

F. +43(0)1 489 3961-7

[mail@szabo-scandic.com](mailto:mail@szabo-scandic.com)

[www.szabo-scandic.com](http://www.szabo-scandic.com)

[linkedin.com/company/szaboscandic](https://www.linkedin.com/company/szaboscandic) 

## IL13RA2 (Human) IP-WB Antibody Pair

Catalog # : H00003598-PW1

規格 : [ 1 Set ]

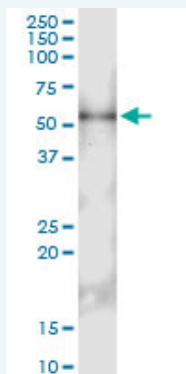
[List All](#)

### Specification

**Product Description:** This IP-WB antibody pair set comes with one antibody for immunoprecipitation and another to detect the precipitated protein in western blot.

**Reactivity:** Human

**Quality Control Testing:** Immunoprecipitation-Western Blot (IP-WB)



Immunoprecipitation of IL13RA2 transfected lysate using rabbit polyclonal anti-IL13RA2 and Protein A Magnetic Bead ([U0007](#)), and immunoblotted with mouse polyclonal anti-IL13RA2.

**Supplied Product:** Antibody pair set content:  
1. Antibody pair for IP: rabbit polyclonal anti-IL13RA2 (300 ul)  
2. Antibody pair for WB: mouse polyclonal anti-IL13RA2 (50 ul)

**Storage Instruction:** Store reagents of the antibody pair set at -20°C or lower. Please aliquot to avoid repeated freeze thaw cycle. Reagents should be returned to -20°C storage immediately after use.

**MSDS:**  [Download](#)

### Applications

Immunoprecipitation-Western Blot

 [Protocol Download](#)

### Gene Information

**Entrez GeneID:** [3598](#)

**Gene Name:** IL13RA2

**Gene Alias:** CD213A2,IL-13R,IL13BP

**Gene Description:** interleukin 13 receptor, alpha 2

**Omim ID:** [300130](#)

**Gene Ontology:** [Hyperlink](#)

### Application Image

Immunoprecipitation-Western Blot

**Gene Summary:** The protein encoded by this gene is closely related to IL13RA1, a subunit of the interleukin 13 receptor complex. This protein binds IL13 with high affinity, but lacks cytoplasmic domain, and does not appear to function as a signal mediator. It is reported to play a role in the internalization of IL13. [provided by RefSeq]

**Other Designations:** IL-13 receptor, OTTHUMP00000023871, interleukin 13 binding protein, interleukin 13 receptor alpha 2 chain

### Gene Pathway

[Jak-STAT signaling pathway](#)

### Related Disease

[Asthma](#) [Asthma](#) [Bronchiolitis, Viral](#) [Chorioamnionitis Fetal Membranes, Premature Rupture](#) [Genetic Predisposition to Disease Infant, Premature, Diseases](#) [Obstetric Labor, Premature](#) [Pre-Eclampsia](#) [Premature Birth](#) [Pulmonary Disease, Chronic Obstructive](#) [Respiratory Syncytial Virus Infections](#) [Scleroderma, Systemic](#)

[服務條款](#) | [隱私權政策](#) | [著作及商標](#) | [網站地圖](#)

©2016 亞諾法生技股份有限公司 Abnova Corporation. 版權所有.