



SZABO SCANDIC

Part of Europa Biosite

Produktinformation



Forschungsprodukte & Biochemikalien



Zellkultur & Verbrauchsmaterial



Diagnostik & molekulare Diagnostik



Laborgeräte & Service

Weitere Information auf den folgenden Seiten!
See the following pages for more information!



Lieferung & Zahlungsart

siehe unsere [Liefer- und Versandbedingungen](#)

Zuschläge

- Mindermengenzuschlag
- Trockeneiszuschlag
- Gefahrgutzuschlag
- Expressversand

SZABO-SCANDIC HandelsgmbH

Quellenstraße 110, A-1100 Wien

T. +43(0)1 489 3961-0

F. +43(0)1 489 3961-7

mail@szabo-scandic.com

www.szabo-scandic.com

[linkedin.com/company/szaboscandic](https://www.linkedin.com/company/szaboscandic) 

INPP1 (Human) IP-WB Antibody Pair

Catalog # : H00003628-PW2

規格 : [1 Set]

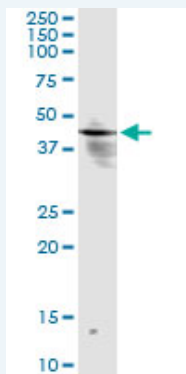
[List All](#)

Specification

Product Description: This IP-WB antibody pair set comes with one antibody for immunoprecipitation and another to detect the precipitated protein in western blot.

Reactivity: Human

Quality Control Testing: Immunoprecipitation-Western Blot (IP-WB)



Immunoprecipitation of INPP1 transfected lysate using mouse monoclonal anti-INPP1 and Protein A Magnetic Bead ([U0007](#)), and immunoblotted with rabbit polyclonal anti-INPP1.

Supplied Product: Antibody pair set content:
1. Antibody pair for IP: mouse monoclonal anti-INPP1 (300 ug)
2. Antibody pair for WB: rabbit polyclonal anti-INPP1 (50 ul)

Storage Instruction: Store reagents of the antibody pair set at -20°C or lower. Please aliquot to avoid repeated freeze thaw cycle. Reagents should be returned to -20°C storage immediately after use.

MSDS:  [Download](#)

Applications

Immunoprecipitation-Western Blot

 [Protocol Download](#)

Gene Information

Entrez GeneID: [3628](#)

Gene Name: INPP1

Gene Alias: MGC110984

Gene Description: inositol polyphosphate-1-phosphatase

Omim ID: [147263](#)

Gene Ontology: [Hyperlink](#)

Application Image

Immunoprecipitation-Western Blot

Gene Summary: This gene encodes the enzyme inositol polyphosphate-1-phosphatase, one of the enzymes involved in phosphatidylinositol signaling pathways. This enzyme removes the phosphate group at position 1 of the inositol ring from the polyphosphates inositol 1,4-bisphosphate and inositol 1,3,4-trisphosphate. [provided by RefSeq]

Other Designations: -

Gene Pathway

[Inositol phosphate metabolism](#) [Metabolic pathways](#) [Phosphatidylinositol signaling system](#)

Related Disease

[Attention Deficit Disorder with Hyperactivity](#) [Autistic Disorder](#) [Bipolar Disorder](#) [Diabetes Mellitus, Type 2](#) [Genetic Predisposition to Disease](#) [Hyperinsulinism](#) [Insulin Resistance](#) [Mental Disorders](#) [NARP](#) [Obesity](#) [Obesity, Morbid](#) [Stress Disorders, Post-Traumatic](#)

[服務條款](#) | [隱私權政策](#) | [著作及商標](#) | [網站地圖](#)

©2016 亞諾法生技股份有限公司 Abnova Corporation. 版權所有.