



SZABO SCANDIC

Part of Europa Biosite

Produktinformation



Forschungsprodukte & Biochemikalien



Zellkultur & Verbrauchsmaterial



Diagnostik & molekulare Diagnostik



Laborgeräte & Service

Weitere Information auf den folgenden Seiten!
See the following pages for more information!



Lieferung & Zahlungsart

siehe unsere [Liefer- und Versandbedingungen](#)

Zuschläge

- Mindermengenzuschlag
- Trockeneiszuschlag
- Gefahrgutzuschlag
- Expressversand

SZABO-SCANDIC HandelsgmbH

Quellenstraße 110, A-1100 Wien

T. +43(0)1 489 3961-0

F. +43(0)1 489 3961-7

mail@szabo-scandic.com

www.szabo-scandic.com

[linkedin.com/company/szaboscandic](https://www.linkedin.com/company/szaboscandic) 

IRF5 (Human) IP-WB Antibody Pair

Catalog # : H00003663-PW2

規格 : [1 Set]

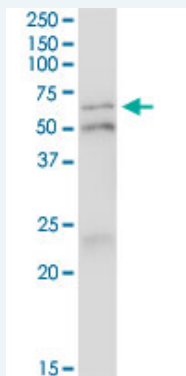
List All

Specification

Product Description: This IP-WB antibody pair set comes with one antibody for immunoprecipitation and another to detect the precipitated protein in western blot.

Reactivity: Human

Quality Control Testing: Immunoprecipitation-Western Blot (IP-WB)



Immunoprecipitation of IRF5 transfected lysate using mouse monoclonal anti-IRF5 and Protein A Magnetic Bead ([U0007](#)), and immunoblotted with mouse polyclonal anti-IRF5.

Supplied Product: Antibody pair set content:
1. Antibody pair for IP: mouse monoclonal anti-IRF5 (300 ug)
2. Antibody pair for WB: mouse polyclonal anti-IRF5 (50 ul)

Storage Instruction: Store reagents of the antibody pair set at -20°C or lower. Please aliquot to avoid repeated freeze thaw cycle. Reagents should be returned to -20°C storage immediately after use.

Applications

Immunoprecipitation-Western Blot

 [Protocol Download](#)

Gene Information

Entrez GeneID: [3663](#)

Gene Name: IRF5

Gene Alias: SLEB10

Gene Description: interferon regulatory factor 5

Omim ID: [607218](#)

Gene Ontology: [Hyperlink](#)

Gene Summary: This gene encodes a member of the interferon regulatory factor (IRF)

family, a group of transcription factors with diverse roles, including virus-mediated activation of interferon, and modulation of cell growth, differentiation, apoptosis, and immune system activity. Members of the IRF family are characterized by a conserved N-terminal DNA-binding domain containing tryptophan (W) repeats. Alternative splice variants encoding different isoforms exist. [provided by RefSeq]

Other Designations: -

Gene Pathway

[Toll-like receptor signaling pathway](#)

Related Disease

[Antiphospholipid Syndrome](#) [Arthritis, Rheumatoid](#) [Asthma](#) [Asthma](#) [Atherosclerosis](#) [Atherosclerosis](#) [Autoimmune Diseases](#) [Behcet Syndrome](#) [Bronchiolitis, Viral](#) [Cardiovascular Diseases](#) [Carotid Stenosis](#) [Cerebral Hemorrhage](#) [Crohn's disease](#) [Diabetes Mellitus](#) [Diabetes Mellitus, Type 1](#) [Diabetes Mellitus, Type 2](#) [Disease Progression](#) [Edema](#) [Endometriosis](#)

... see more

[服務條款](#) | [隱私權政策](#) | [著作及商標](#) | [網站地圖](#)

©2016 亞諾法生技股份有限公司 Abnova Corporation. 版權所有.