



SZABO SCANDIC

Part of Europa Biosite

Produktinformation



Forschungsprodukte & Biochemikalien



Zellkultur & Verbrauchsmaterial



Diagnostik & molekulare Diagnostik



Laborgeräte & Service

Weitere Information auf den folgenden Seiten!
See the following pages for more information!



Lieferung & Zahlungsart

siehe unsere [Liefer- und Versandbedingungen](#)

Zuschläge

- Mindermengenzuschlag
- Trockeneiszuschlag
- Gefahrgutzuschlag
- Expressversand

SZABO-SCANDIC HandelsgmbH

Quellenstraße 110, A-1100 Wien

T. +43(0)1 489 3961-0

F. +43(0)1 489 3961-7

mail@szabo-scandic.com

www.szabo-scandic.com

[linkedin.com/company/szaboscandic](https://www.linkedin.com/company/szaboscandic) 

ITIH1 (Human) IP-WB Antibody Pair

Catalog # : H00003697-PW1

規格 : [1 Set]

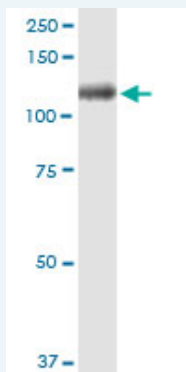
[List All](#)

Specification

Product Description: This IP-WB antibody pair set comes with one antibody for immunoprecipitation and another to detect the precipitated protein in western blot.

Reactivity: Human

Quality Control Testing: Immunoprecipitation-Western Blot (IP-WB)



Immunoprecipitation of ITIH1 transfected lysate using rabbit polyclonal anti-ITIH1 and Protein A Magnetic Bead ([U000Z](#)), and immunoblotted with mouse purified polyclonal anti-ITIH1.

Supplied Product: Antibody pair set content:
 1. Antibody pair for IP: rabbit polyclonal anti-ITIH1 (300 ul)
 2. Antibody pair for WB: mouse purified polyclonal anti-ITIH1 (50 ug)

Storage Instruction: Store reagents of the antibody pair set at -20°C or lower. Please aliquot to avoid repeated freeze thaw cycle. Reagents should be returned to -20°C storage immediately after use.

MSDS:  [Download](#)

Applications

Immunoprecipitation-Western Blot

 [Protocol Download](#)

Gene Information

Entrez GeneID: [3697](#)

Gene Name: ITIH1

Gene Alias: H1P,IATIH,ITIH,MGC126415

Gene Description: inter-alpha (globulin) inhibitor H1

Omim ID: [147270](#)

Gene Ontology: [Hyperlink](#)

Application Image

Immunoprecipitation-Western Blot

Other inter-alpha (globulin) inhibitor, H1 polypeptide

Designations:

Related Disease

[Bipolar Disorder](#) [Genetic Predisposition to Disease](#) [Schizophrenia](#) [Schizophrenia](#)

[服務條款](#) | [隱私權政策](#) | [著作及商標](#) | [網站地圖](#)

©2016 亞諾法生技股份有限公司 Abnova Corporation. 版權所有.