



# SZABO SCANDIC

Part of Europa Biosite

## Produktinformation



Forschungsprodukte & Biochemikalien



Zellkultur & Verbrauchsmaterial



Diagnostik & molekulare Diagnostik



Laborgeräte & Service

Weitere Information auf den folgenden Seiten!  
See the following pages for more information!



### Lieferung & Zahlungsart

siehe unsere [Liefer- und Versandbedingungen](#)

### Zuschläge

- Mindermengenzuschlag
- Trockeneiszuschlag
- Gefahrgutzuschlag
- Expressversand

### SZABO-SCANDIC HandelsgmbH

Quellenstraße 110, A-1100 Wien

T. +43(0)1 489 3961-0

F. +43(0)1 489 3961-7

[mail@szabo-scandic.com](mailto:mail@szabo-scandic.com)

[www.szabo-scandic.com](http://www.szabo-scandic.com)

[linkedin.com/company/szaboscandic](https://www.linkedin.com/company/szaboscandic) 

## KLK2 (Human) IP-WB Antibody Pair

Catalog # : H00003817-PW2

規格 : [ 1 Set ]

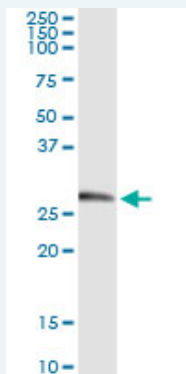
[List All](#)

### Specification

**Product Description:** This IP-WB antibody pair set comes with one antibody for immunoprecipitation and another to detect the precipitated protein in western blot.

**Reactivity:** Human

**Quality Control Testing:** Immunoprecipitation-Western Blot (IP-WB)



Immunoprecipitation of KLK2 transfected lysate using mouse monoclonal anti-KLK2 and Protein A Magnetic Bead ([U0007](#)), and immunoblotted with rabbit polyclonal anti-KLK2.

**Supplied Product:** Antibody pair set content:  
1. Antibody pair for IP: mouse monoclonal anti-KLK2 (300 ug)  
2. Antibody pair for WB: rabbit polyclonal anti-KLK2 (50 ul)

**Storage Instruction:** Store reagents of the antibody pair set at -20°C or lower. Please aliquot to avoid repeated freeze thaw cycle. Reagents should be returned to -20°C storage immediately after use.

**MSDS:**  [Download](#)

### Applications

**Immunoprecipitation-Western Blot**

 [Protocol Download](#)

### Gene Information

**Entrez GeneID:** [3817](#)

**Gene Name:** KLK2

**Gene Alias:** KLK2A2, MGC12201, hK2

**Gene Description:** kallikrein-related peptidase 2

**Omim ID:** [147960](#)

**Gene Ontology:** [Hyperlink](#)

### Application Image

Immunoprecipitation-Western Blot

**Other** glandular kallikrein 2, kallikrein 2, prostatic

**Designations:**

### **Related Disease**

[Adenocarcinoma](#) [Birth Weight](#) [Breast cancer](#) [Breast Neoplasms](#) [Cardiovascular Diseases](#)  
[Diabetes Mellitus, Type 2](#) [Disease Progression](#) [Edema](#) [Genetic Predisposition to Disease](#)  
[Glioblastoma](#) [Glioma](#) [Hypertension](#) [Leukemia](#) [Leukemia, Myeloid, Acute](#)  
[Meningeal Neoplasms](#) [Meningioma](#) [Neoplasm Recurrence, Local](#) [Prostate cancer](#)  
[Prostatic Neoplasms](#)

[服務條款](#) | [隱私權政策](#) | [著作及商標](#) | [網站地圖](#)

©2016 亞諾法生技股份有限公司 Abnova Corporation. 版權所有.