



SZABO SCANDIC

Part of Europa Biosite

Produktinformation



Forschungsprodukte & Biochemikalien



Zellkultur & Verbrauchsmaterial



Diagnostik & molekulare Diagnostik



Laborgeräte & Service

Weitere Information auf den folgenden Seiten!
See the following pages for more information!



Lieferung & Zahlungsart

siehe unsere [Liefer- und Versandbedingungen](#)

Zuschläge

- Mindermengenzuschlag
- Trockeneiszuschlag
- Gefahrgutzuschlag
- Expressversand

SZABO-SCANDIC HandelsgmbH

Quellenstraße 110, A-1100 Wien

T. +43(0)1 489 3961-0

F. +43(0)1 489 3961-7

mail@szabo-scandic.com

www.szabo-scandic.com

[linkedin.com/company/szaboscandic](https://www.linkedin.com/company/szaboscandic) 

KRT5 (Human) IP-WB Antibody Pair

Catalog # : H00003852-PW1

規格 : [1 Set]

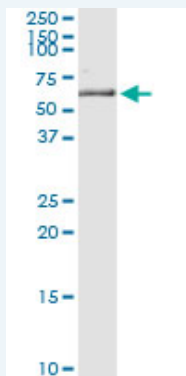
[List All](#)

Specification

Product Description: This IP-WB antibody pair set comes with one antibody for immunoprecipitation and another to detect the precipitated protein in western blot.

Reactivity: Human

Quality Control Testing: Immunoprecipitation-Western Blot (IP-WB)



Immunoprecipitation of KRT5 transfected lysate using mouse monoclonal anti-KRT5 and Protein A Magnetic Bead ([U0007](#)), and immunoblotted with rabbit polyclonal anti-KRT5.

Supplied Product: Antibody pair set content:
1. Antibody pair for IP: mouse monoclonal anti-KRT5 (300 ug)
2. Antibody pair for WB: rabbit polyclonal anti-KRT5 (50 ul)

Storage Instruction: Store reagents of the antibody pair set at -20°C or lower. Please aliquot to avoid repeated freeze thaw cycle. Reagents should be returned to -20°C storage immediately after use.

MSDS:  [Download](#)

Applications

Immunoprecipitation-Western Blot

 [Protocol Download](#)

Gene Information

Entrez GeneID: [3852](#)

Gene Name: KRT5

Gene Alias: CK5,DDD,EBS2,K5,KRT5A

Gene Description: keratin 5

Omim ID: [131800](#), [131960](#), [148040](#), [179850](#)

Gene Ontology: [Hyperlink](#)

Application Image

Immunoprecipitation-Western Blot

Gene Summary: The protein encoded by this gene is a member of the keratin gene family. The type II cytokeratins consist of basic or neutral proteins which are arranged in pairs of heterotypic keratin chains coexpressed during differentiation of simple and stratified epithelial tissues. This type II cytokeratin is specifically expressed in the basal layer of the epidermis with family member KRT14. Mutations in these genes have been associated with a complex of diseases termed epidermolysis bullosa simplex. The type II cytokeratins are clustered in a region of chromosome 12q12-q13. [provided by RefSeq]

Other Designations: 58 kda cytokeratin,epidermolysis bullosa simplex 2 Dowling-Meara/Kobner/Weber-Cockayne types,keratin 5 (epidermolysis bullosa simplex, Dowling-Meara/Kobner/Weber-Cockayne types),keratin, type II cytoskeletal 5

Related Disease

[Brain Ischemia Carcinoma](#), [Basal Cell Carcinoma](#), [Squamous Cell Cardiovascular Diseases](#), [Coronary Artery Disease](#), [Coronary Disease](#), [Genetic Predisposition to Disease](#), [Melanoma](#), [Myocardial Infarction](#), [Skin Neoplasms](#), [Stroke](#)

[服務條款](#) | [隱私權政策](#) | [著作及商標](#) | [網站地圖](#)

©2016 亞諾法生技股份有限公司 Abnova Corporation. 版權所有.