



# SZABO SCANDIC

Part of Europa Biosite

## Produktinformation



Forschungsprodukte & Biochemikalien



Zellkultur & Verbrauchsmaterial



Diagnostik & molekulare Diagnostik



Laborgeräte & Service

Weitere Information auf den folgenden Seiten!  
See the following pages for more information!



### Lieferung & Zahlungsart

siehe unsere [Liefer- und Versandbedingungen](#)

### Zuschläge

- Mindermengenzuschlag
- Trockeneiszuschlag
- Gefahrgutzuschlag
- Expressversand

### SZABO-SCANDIC HandelsgmbH

Quellenstraße 110, A-1100 Wien

T. +43(0)1 489 3961-0

F. +43(0)1 489 3961-7

[mail@szabo-scandic.com](mailto:mail@szabo-scandic.com)

[www.szabo-scandic.com](http://www.szabo-scandic.com)

[linkedin.com/company/szaboscandic](https://www.linkedin.com/company/szaboscandic) 

## KRT8 (Human) IP-WB Antibody Pair

Catalog # : H00003856-PW1

規格 : [ 1 Set ]

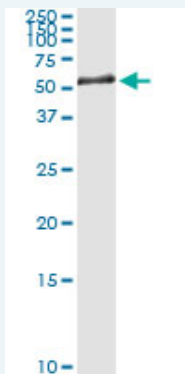
List All

### Specification

**Product Description:** This IP-WB antibody pair set comes with one antibody for immunoprecipitation and another to detect the precipitated protein in western blot.

**Reactivity:** Human

**Quality Control Testing:** Immunoprecipitation-Western Blot (IP-WB)



Immunoprecipitation of KRT8 transfected lysate using rabbit polyclonal anti-KRT8 and Protein A Magnetic Bead ([U0007](#)), and immunoblotted with mouse purified polyclonal anti-KRT8.

**Supplied Product:** Antibody pair set content:  
1. Antibody pair for IP: rabbit polyclonal anti-KRT8 (300 ul)  
2. Antibody pair for WB: mouse purified polyclonal anti-KRT8 (50 ug)

**Storage Instruction:** Store reagents of the antibody pair set at -20°C or lower. Please aliquot to avoid repeated freeze thaw cycle. Reagents should be returned to -20°C storage immediately after use.

**MSDS:**  [Download](#)

### Applications

Immunoprecipitation-Western Blot

 [Protocol Download](#)

### Gene Information

**Entrez GeneID:** [3856](#)

**Gene Name:** KRT8

**Gene Alias:** CARD2,CK8,CYK8,K2C8,K8,KO

**Gene Description:** keratin 8

**Omim ID:** [148060](#), [215600](#)

**Gene Ontology:** [Hyperlink](#)

### Application Image

Immunoprecipitation-Western Blot

---

**Gene Summary:** This gene is a member of the type II keratin family clustered on the long arm of chromosome 12. Type I and type II keratins heteropolymerize to form intermediate-sized filaments in the cytoplasm of epithelial cells. The product of this gene typically dimerizes with keratin 18 to form an intermediate filament in simple single-layered epithelial cells. This protein plays a role in maintaining cellular structural integrity and also functions in signal transduction and cellular differentiation. Mutations in this gene cause cryptogenic cirrhosis. [provided by RefSeq]

---

**Other Designations:** cytokeratin 8, keratin, type II cytoskeletal 8

---

#### **Related Disease**

---

[Alzheimer Disease](#) [Alzheimer disease](#) [Cerebral Amyloid Angiopathy](#) [Chronic Disease](#) [Disease Progression](#) [Drug-Induced Liver Injury](#) [Genetic Predisposition to Disease](#) [Hepatitis C](#) [Chronic Inflammatory Bowel Diseases](#) [Liver Cirrhosis](#) [Liver Cirrhosis, Biliary](#) [Liver Failure](#) [Liver Failure, Acute](#) [Neuroblastoma](#) [Pancreatitis](#) [Pancreatitis, Alcoholic](#)

---

[服務條款](#) | [隱私權政策](#) | [著作及商標](#) | [網站地圖](#)

©2016 亞諾法生技股份有限公司 Abnova Corporation. 版權所有.