



SZABO SCANDIC

Part of Europa Biosite

Produktinformation



Forschungsprodukte & Biochemikalien



Zellkultur & Verbrauchsmaterial



Diagnostik & molekulare Diagnostik



Laborgeräte & Service

Weitere Information auf den folgenden Seiten!
See the following pages for more information!



Lieferung & Zahlungsart

siehe unsere [Liefer- und Versandbedingungen](#)

Zuschläge

- Mindermengenzuschlag
- Trockeneiszuschlag
- Gefahrgutzuschlag
- Expressversand

SZABO-SCANDIC HandelsgmbH

Quellenstraße 110, A-1100 Wien

T. +43(0)1 489 3961-0

F. +43(0)1 489 3961-7

mail@szabo-scandic.com

www.szabo-scandic.com

[linkedin.com/company/szaboscandic](https://www.linkedin.com/company/szaboscandic) 

KRT18 (Human) IP-WB Antibody Pair

Catalog # : H00003875-PW1

規格 : [1 Set]

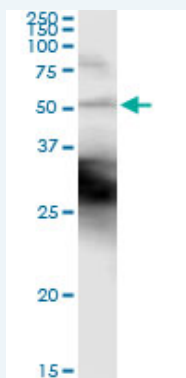
[List All](#)

Specification

Product Description: This IP-WB antibody pair set comes with one antibody for immunoprecipitation and another to detect the precipitated protein in western blot.

Reactivity: Human

Quality Control Testing: Immunoprecipitation-Western Blot (IP-WB)



Immunoprecipitation of KRT18 transfected lysate using mouse monoclonal anti-KRT18 and Protein A Magnetic Bead ([U0007](#)), and immunoblotted with rabbit polyclonal anti-KRT18.

Supplied Product: Antibody pair set content:
1. Antibody pair for IP: mouse monoclonal anti-KRT18 (300 ug)
2. Antibody pair for WB: rabbit polyclonal anti-KRT18 (50 ul)

Storage Instruction: Store reagents of the antibody pair set at -20°C or lower. Please aliquot to avoid repeated freeze thaw cycle. Reagents should be returned to -20°C storage immediately after use.

MSDS:  [Download](#)

Applications

Immunoprecipitation-Western Blot

 [Protocol Download](#)

Gene Information

Entrez GeneID: [3875](#)

Gene Name: KRT18

Gene Alias: CYK18,K18

Gene Description: keratin 18

Omim ID: [148070](#), [215600](#)

Gene Ontology: [Hyperlink](#)

Application Image

Immunoprecipitation-Western Blot

Gene Summary: KRT18 encodes the type I intermediate filament chain keratin 18. Keratin 18, together with its filament partner keratin 8, are perhaps the most commonly found members of the intermediate filament gene family. They are expressed in single layer epithelial tissues of the body. Mutations in this gene have been linked to cryptogenic cirrhosis. Two transcript variants encoding the same protein have been found for this gene. [provided by RefSeq]

Other Designations: cell proliferation-inducing protein 46,cytokeratin 18

Gene Pathway

[Pathogenic Escherichia coli infection - EHEC](#)

Related Disease

[Cleft Lip](#) [Cleft Palate](#) [Drug-Induced Liver Injury](#) [Genetic Predisposition to Disease](#)
[Liver Cirrhosis](#) [Biliary Liver Failure](#) [Liver Failure, Acute](#)

[服務條款](#) | [隱私權政策](#) | [著作及商標](#) | [網站地圖](#)

©2016 亞諾法生技股份有限公司 Abnova Corporation. 版權所有.