



# SZABO SCANDIC

Part of Europa Biosite

## Produktinformation



Forschungsprodukte & Biochemikalien



Zellkultur & Verbrauchsmaterial



Diagnostik & molekulare Diagnostik



Laborgeräte & Service

Weitere Information auf den folgenden Seiten!  
See the following pages for more information!



### Lieferung & Zahlungsart

siehe unsere [Liefer- und Versandbedingungen](#)

### Zuschläge

- Mindermengenzuschlag
- Trockeneiszuschlag
- Gefahrgutzuschlag
- Expressversand

### SZABO-SCANDIC HandelsgmbH

Quellenstraße 110, A-1100 Wien

T. +43(0)1 489 3961-0

F. +43(0)1 489 3961-7

[mail@szabo-scandic.com](mailto:mail@szabo-scandic.com)

[www.szabo-scandic.com](http://www.szabo-scandic.com)

[linkedin.com/company/szaboscandic](https://www.linkedin.com/company/szaboscandic) 

## LMNA (Human) IP-WB Antibody Pair

Catalog # : H00004000-PW2

規格 : [ 1 Set ]

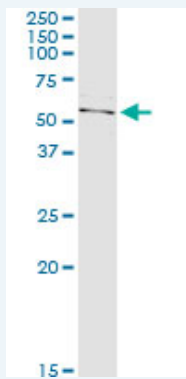
List All

### Specification

**Product Description:** This IP-WB antibody pair set comes with one antibody for immunoprecipitation and another to detect the precipitated protein in western blot.

**Reactivity:** Human

**Quality Control Testing:** Immunoprecipitation-Western Blot (IP-WB)



Immunoprecipitation of LMNA transfected lysate using rabbit polyclonal anti-LMNA and Protein A Magnetic Bead ([U0007](#)), and immunoblotted with mouse purified polyclonal anti-LMNA.

**Supplied Product:** Antibody pair set content:  
1. Antibody pair for IP: rabbit polyclonal anti-LMNA (300 ul)  
2. Antibody pair for WB: mouse purified polyclonal anti-LMNA (50 ug)

**Storage Instruction:** Store reagents of the antibody pair set at -20°C or lower. Please aliquot to avoid repeated freeze thaw cycle. Reagents should be returned to -20°C storage immediately after use.

### Applications

Immunoprecipitation-Western Blot

 [Protocol Download](#)

### Gene Information

**Entrez GeneID:** [4000](#)

**Gene Name:** LMNA

**Gene Alias:** CDCD1,CDDC,CMD1A,CMT2B1,EMD2,FPL,FPLD,HGPS,IDC,LDP1,LFP, LGMD1B,LMN1,LMNC,PRO1

**Gene Description:** lamin A/C

**Omim ID:** [115200](#), [150330](#), [151660](#), [159001](#), [176670](#), [181350](#), [248370](#), [275210](#), [277700](#), [604929](#), [605588](#), [607920](#), [608056](#)

**Gene Ontology:** [Hyperlink](#)

**Gene Summary:** The nuclear lamina consists of a two-dimensional matrix of proteins located next to the inner nuclear membrane. The lamin family of proteins make up the matrix and are highly conserved in evolution. During mitosis, the lamina matrix is reversibly disassembled as the lamin proteins are phosphorylated. Lamin proteins are thought to be involved in nuclear stability, chromatin structure and gene expression. Vertebrate lamins consist of two types, A and B. Through alternate splicing, this gene encodes three type A lamin isoforms. Mutations in this gene lead to several diseases: Emery-Dreifuss muscular dystrophy, familial partial lipodystrophy, limb girdle muscular dystrophy, dilated cardiomyopathy, Charcot-Marie-Tooth disease, and Hutchinson-Gilford progeria syndrome. [provided by RefSeq]

**Other** 70 kDa lamin,OTTHUMP00000015843,OTTHUMP00000015848

**Designations:**

### Gene Pathway

[Arrhythmogenic right ventricular cardiomyopathy \(ARVC\)](#)

[Hypertrophic cardiomyopathy \(HCM\)](#)

### Related Disease

[Aging](#), [Premature Alzheimer Disease](#) [Alzheimer disease](#) [Arrhythmia](#) [Atherosclerosis](#)

[Atherosclerosis](#) [Atrial Fibrillation](#) [Calcinosis](#) [Cardiomyopathy, Dilated](#)

[Cardiovascular Diseases](#) [Cerebrovascular Disorders](#) [Charcot-Marie-Tooth Disease](#)

[Cognition](#) [Cognition Disorders](#) [Coronary Artery Disease](#) [Death, Sudden](#)

[Diabetes Mellitus, Type 2](#) [Diabetic Nephropathies](#) [Edema](#)

... see more

[服務條款](#) | [隱私權政策](#) | [著作及商標](#) | [網站地圖](#)

©2016 亞諾法生技股份有限公司 Abnova Corporation. 版權所有.