



# SZABO SCANDIC

Part of Europa Biosite

## Produktinformation



Forschungsprodukte & Biochemikalien



Zellkultur & Verbrauchsmaterial



Diagnostik & molekulare Diagnostik



Laborgeräte & Service

Weitere Information auf den folgenden Seiten!  
See the following pages for more information!



### Lieferung & Zahlungsart

siehe unsere [Liefer- und Versandbedingungen](#)

### Zuschläge

- Mindermengenzuschlag
- Trockeneiszuschlag
- Gefahrgutzuschlag
- Expressversand

### SZABO-SCANDIC HandelsgmbH

Quellenstraße 110, A-1100 Wien

T. +43(0)1 489 3961-0

F. +43(0)1 489 3961-7

[mail@szabo-scandic.com](mailto:mail@szabo-scandic.com)

[www.szabo-scandic.com](http://www.szabo-scandic.com)

[linkedin.com/company/szaboscandic](https://www.linkedin.com/company/szaboscandic) 

## LOXL1 (Human) IP-WB Antibody Pair

Catalog # : H00004016-PW1

規格 : [ 1 Set ]

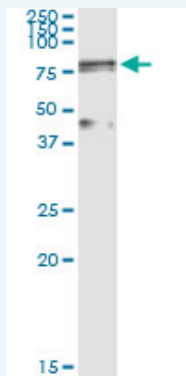
List All

### Specification

**Product Description:** This IP-WB antibody pair set comes with one antibody for immunoprecipitation and another to detect the precipitated protein in western blot.

**Reactivity:** Human

**Quality Control Testing:** Immunoprecipitation-Western Blot (IP-WB)



Immunoprecipitation of LOXL1 transfected lysate using rabbit polyclonal anti-LOXL1 and Protein A Magnetic Bead (U0007), and immunoblotted with mouse purified polyclonal anti-LOXL1.

**Supplied Product:** Antibody pair set content:  
1. Antibody pair for IP: rabbit polyclonal anti-LOXL1 (300 ul)  
2. Antibody pair for WB: mouse purified polyclonal anti-LOXL1 (50 ug)

**Storage Instruction:** Store reagents of the antibody pair set at -20°C or lower. Please aliquot to avoid repeated freeze thaw cycle. Reagents should be returned to -20°C storage immediately after use.

**MSDS:**  [Download](#)

### Applications

Immunoprecipitation-Western Blot

 [Protocol Download](#)

### Gene Information

**Entrez GeneID:** [4016](#)

**Gene Name:** LOXL1

**Gene Alias:** LOL,LOXL

**Gene Description:** lysyl oxidase-like 1

**Omim ID:** [153456](#), [177650](#)

**Gene Ontology:** [Hyperlink](#)

### Application Image

Immunoprecipitation-Western Blot

---

**Gene Summary:** This gene encodes a member of the lysyl oxidase gene family. The prototypic member of the family is essential to the biogenesis of connective tissue, encoding an extracellular copper-dependent amine oxidase that catalyses the first step in the formation of crosslinks in collagens and elastin. A highly conserved amino acid sequence at the C-terminus end appears to be sufficient for amine oxidase activity, suggesting that each family member may retain this function. The N-terminus is poorly conserved and may impart additional roles in developmental regulation, senescence, tumor suppression, cell growth control, and chemotaxis to each member of the family. [provided by RefSeq]

---

**Other** lysyl oxidase homolog 1

**Designations:**

---

### **Related Disease**

---

[Aneurysm, Dissecting](#) [Atherosclerosis Cardiovascular Diseases](#) [Cataract Exfoliation Syndrome](#) [Fetal Membranes, Premature Rupture](#) [Genetic Predisposition to Disease](#) [Glaucoma](#) [Glaucoma](#) [Glaucoma, Angle-Closure](#) [Glaucoma, Open-Angle](#) [Intracranial Aneurysm](#) [Low Tension Glaucoma](#) [Pigmentation Disorders](#) [Premature Birth](#) [Tobacco Use Disorder](#) [Ventricular Dysfunction, Left](#)

---

[服務條款](#) | [隱私權政策](#) | [著作及商標](#) | [網站地圖](#)

©2016 亞諾法生技股份有限公司 Abnova Corporation. 版權所有.