



SZABO SCANDIC

Part of Europa Biosite

Produktinformation



Forschungsprodukte & Biochemikalien



Zellkultur & Verbrauchsmaterial



Diagnostik & molekulare Diagnostik



Laborgeräte & Service

Weitere Information auf den folgenden Seiten!
See the following pages for more information!



Lieferung & Zahlungsart

siehe unsere [Liefer- und Versandbedingungen](#)

Zuschläge

- Mindermengenzuschlag
- Trockeneiszuschlag
- Gefahrgutzuschlag
- Expressversand

SZABO-SCANDIC HandelsgmbH

Quellenstraße 110, A-1100 Wien

T. +43(0)1 489 3961-0

F. +43(0)1 489 3961-7

mail@szabo-scandic.com

www.szabo-scandic.com

[linkedin.com/company/szaboscandic](https://www.linkedin.com/company/szaboscandic) 

MME (Human) IP-WB Antibody Pair

Catalog # : H00004311-PW1

規格 : [1 Set]

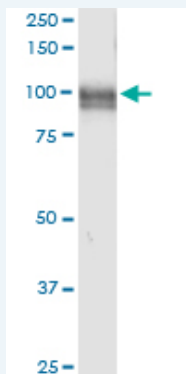
[List All](#)

Specification

Product Description: This IP-WB antibody pair set comes with one antibody for immunoprecipitation and another to detect the precipitated protein in western blot.

Reactivity: Human

Quality Control Testing: Immunoprecipitation-Western Blot (IP-WB)



Immunoprecipitation of MME transfected lysate using rabbit polyclonal anti-MME and Protein A Magnetic Bead (U000Z), and immunoblotted with mouse purified polyclonal anti-MME.

Supplied Product: Antibody pair set content:
1. Antibody pair for IP: rabbit polyclonal anti-MME (300 ul)
2. Antibody pair for WB: mouse purified polyclonal anti-MME (50 ug)

Storage Instruction: Store reagents of the antibody pair set at -20°C or lower. Please aliquot to avoid repeated freeze thaw cycle. Reagents should be returned to -20°C storage immediately after use.

MSDS:  [Download](#)

Applications

Immunoprecipitation-Western Blot

 [Protocol Download](#)

Gene Information

Entrez GeneID: [4311](#)

Gene Name: MME

Gene Alias: CALLA,CD10,DKFZp686O16152,MGC126681,MGC126707,NEP

Gene Description: membrane metallo-endorpeptidase

Omim ID: [120520](#)

Gene Ontology: [Hyperlink](#)

Application Image

Immunoprecipitation-Western Blot

Gene Summary: This gene encodes a common acute lymphocytic leukemia antigen that is an important cell surface marker in the diagnosis of human acute lymphocytic leukemia (ALL). This protein is present on leukemic cells of pre-B phenotype, which represent 85% of cases of ALL. This protein is not restricted to leukemic cells, however, and is found on a variety of normal tissues. It is a glycoprotein that is particularly abundant in kidney, where it is present on the brush border of proximal tubules and on glomerular epithelium. The protein is a neutral endopeptidase that cleaves peptides at the amino side of hydrophobic residues and inactivates several peptide hormones including glucagon, enkephalins, substance P, neurotensin, oxytocin, and bradykinin. This gene, which encodes a 100-kD type II transmembrane glycoprotein, exists in a single copy of greater than 45 kb. The 5' untranslated region of this gene is alternatively spliced, resulting in four separate mRNA transcripts. The coding region is not affected by alternative splicing. [provided by RefSeq]

Other Designations: atriopeptidase,common acute lymphocytic leukemia antigen,enkephalinase,membrane metallo-endopeptidase (neutral endopeptidase, enkephalinase),membrane metallo-endopeptidase (neutral endopeptidase, enkephalinase, CALLA, CD10),membrane metallo-endopeptidase

Gene Pathway

[Alzheimer's disease](#) [Hematopoietic cell lineage](#) [Renin-angiotensin system](#)

Related Disease

[Alzheimer Disease](#) [Alzheimer disease](#) [Anorexia Nervosa](#) [Atherosclerosis](#) [Brain Injuries](#)
[Bulimia](#) [Calcinosis](#) [Cardiovascular Diseases](#) [Coronary Artery Disease](#)
[Diabetes Complications](#) [Genetic Predisposition to Disease](#) [Metabolic Syndrome X](#)
[Neoplasms](#) [Osteoporosis](#)

[服務條款](#) | [隱私權政策](#) | [著作及商標](#) | [網站地圖](#)

©2016 亞諾法生技股份有限公司 Abnova Corporation. 版權所有.