



SZABO SCANDIC

Part of Europa Biosite

Produktinformation



Forschungsprodukte & Biochemikalien



Zellkultur & Verbrauchsmaterial



Diagnostik & molekulare Diagnostik



Laborgeräte & Service

Weitere Information auf den folgenden Seiten!
See the following pages for more information!



Lieferung & Zahlungsart

siehe unsere [Liefer- und Versandbedingungen](#)

Zuschläge

- Mindermengenzuschlag
- Trockeneiszuschlag
- Gefahrgutzuschlag
- Expressversand

SZABO-SCANDIC HandelsgmbH

Quellenstraße 110, A-1100 Wien

T. +43(0)1 489 3961-0

F. +43(0)1 489 3961-7

mail@szabo-scandic.com

www.szabo-scandic.com

[linkedin.com/company/szaboscandic](https://www.linkedin.com/company/szaboscandic) 

MMP1 (Human) Matched Antibody Pair

Catalog # : H00004312-AP51

規格 : [1 Set]

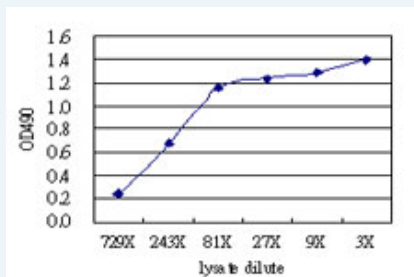
List All

Specification

Product Description: This antibody pair set comes with matched antibody pair to detect and quantify protein level of human MMP1.

Reactivity: Human

Quality Control Testing: Standard curve using MMP1 293T overexpression lysate (non-denatured) as an analyte.



Sandwich ELISA detection sensitivity ranging from approximately 729x to 3x dilution of the MMP1 293T overexpression lysate (non-denatured).

Supplied Product: Antibody pair set content:
 1. Capture antibody: mouse monoclonal anti-MMP1, IgG2a Kappa (100 ug)
 2. Detection antibody: rabbit purified polyclonal anti-MMP1 (50 ug)
 *Reagents are sufficient for at least 3-5 x 96 well plates using recommended protocols.

Storage Instruction: Store reagents of the antibody pair set at -20°C or lower. Please aliquot to avoid repeated freeze thaw cycle. Reagents should be returned to -20°C storage immediately after use.

MSDS:  [Download](#)

Applications

ELISA Pair (Transfected lysate)

 [Protocol Download](#)

Gene Information

Entrez GeneID: [4312](#)

Gene Name: MMP1

Gene Alias: CLG, CLGN

Gene Description: matrix metalloproteinase 1 (interstitial collagenase)

Omim ID: [120353](#), [606963](#)

Gene Ontology: [Hyperlink](#)

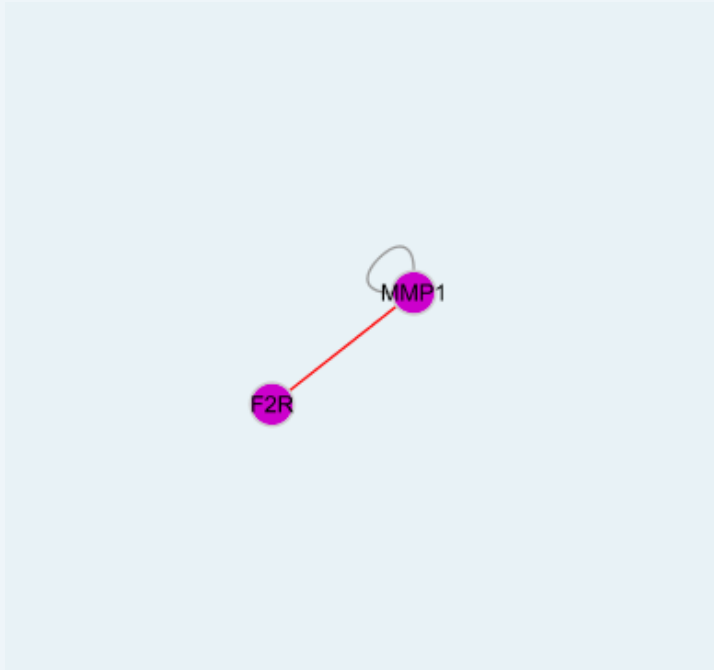
Application Image

ELISA Pair (Transfected lysate)

Gene Summary: Proteins of the matrix metalloproteinase (MMP) family are involved in the breakdown of extracellular matrix in normal physiological processes, such as embryonic development, reproduction, and tissue remodeling, as well as in disease processes, such as arthritis and metastasis. Most MMP's are secreted as inactive proproteins which are activated when cleaved by extracellular proteinases. This gene encodes a secreted enzyme which breaks down the interstitial collagens, types I, II, and III. The gene is part of a cluster of MMP genes which localize to chromosome 11q22.3. Alternative splicing results in multiple transcript variants.[provided by RefSeq]

Other Designations: fibroblast collagenase,interstitial collagenase,matrix metalloprotease 1,matrix metalloproteinase 1,matrix metalloproteinase 1 (interstitial collagenase)

Interactome



Gene Pathway

[Bladder cancer](#) [Pathways in cancer](#) [PPAR signaling pathway](#)

Related Disease

[Adenocarcinoma](#) [Adenomatous Polyps](#) [Aggressive Periodontitis](#) [Airway Obstruction](#)
[alpha 1-Antitrypsin Deficiency](#) [Alpha-1-antitrypsin deficiency](#) [Alveolar Bone Loss](#)
[Alzheimer Disease](#) [Alzheimer disease](#) [Amyotrophic Lateral Sclerosis](#)
[Amyotrophic lateral sclerosis](#) [Anoxia](#) [Aortic Aneurysm, Abdominal](#) [Arthritis, Rheumatoid](#)
[Asthma](#) [Asthma](#) [Astrocytoma](#) [Atherosclerosis](#) [Atherosclerosis](#)

... see more

[服務條款](#) | [隱私權政策](#) | [著作及商標](#) | [網站地圖](#)

©2016 亞諾法生技股份有限公司 Abnova Corporation. 版權所有.